



The PSWSFA is a family-oriented fishing club established in 1957. Our meetings are held on the 3rd Tuesday of each month (March-Dec.) at 7:00pm. The meetings are free and open to the public and are a great place to swap stories with other local fishermen, find new fishing partners and plan trips together. We have raffles with nice giveaways-donated by local businesses plus prizes we buy ourselves. Each month we have speakers sharing their experience on one of the local fisheries. Come join us and get to know some of the other fishermen in your local area. Directions on last page. You can visit us at www.pswsfa.com.

3rd Meeting of 2025
20 May 2025 7:00pm

Greetings and welcome to May, practically summer.

This month's guest speakers will be Mel Richardson and Kenney Meyer on flounder.

On another note, the club has a Members only Facebook page called: PSWSFA Members Only. Search for it within Facebook. The page is for private conversations between members about fishing info etc. Just ask to be part of the group.

I finally caught my first striper in mid April, only 17" or so. Of course Stan's grandson was able to bring in a 38" striper. I guess I need to see him for some advise. The deeper into May we get the better the striper fishing has been at Ft Eustis. Not very big but getting bigger.

Stay well, Mike the Editor

FROM THE PRESIDENT

Folks,

The club lost another long time member two weeks ago. Bill Tice passed away. He was a board member for as long as I can remember. Our thoughts and prayers go out to his family. His obituary is here: <https://www.legacy.com/funeral-homes/obituaries/name/william-tice-jr-obituary?pid=209029293&v=batesville&view=guestbook>

May is here and water bay water temperatures have approached the magic 70-degree mark. Flounder have been caught along the eastern shore, CBBT, Rudee Inlet and elsewhere in the lower bay. Tog are being caught in the bay as well as the offshore wrecks. Big reds and puppy drum are being encountered throughout the lower bay and eastern shore with the big reds migrating up the bay and being caught as far as the Rappahannock. Black drum are still off the eastern shore, the CBBT and inside the

bay. Flounder are in the bay and there have been quality catches along the CBBT. A small cobia was caught on the Hampton Bar the first week of 5th of May. There should be more cobia showing very soon. There have been large schools of bluefish around the lower bay and the HRBT with some of the fish being over 10lbs. Club member Morgan Simmerman caught a 36-inch citation while fishing the mouth of the James River a week ago. While stuck in traffic on the Hampton Creek bridge on May 11 th I observed an Osprey flying back to its nest with a ribbon fish, so they have also arrived for those who love to catch ribbon fish.

Keep in mind that tog season will be closing and seabass will be opening on the 15th along with blue line tilefish. Ensure you are familiar with the regs for tilefish if you intend to target them.

Tuna, mahi and wahoo are

Continued on page 3

2024 Club Officers

Stan Simmerman
President

Milton Hudgens
Vice President

Wally Veal
Secretary

Christina Grice
Treasurer

Danny Forehand
Past President

Board of Directors

Ronnie Wilson
Gary Donaldson
Rick Wineman
Charles Randolph
Mike Frielingsdorf
Richie Moore
Paul Downey
Nicole Ambercrombie
Johnny Boyd
Gerald Abrams (alt)
Rob Laymen

Please Note: March has come and gone and dues are still due. If you can't make it to the meeting scan the QR code below with your phone's camera and it will take you to the site where you can pay your 2025 dues online. However, there is a small fee which goes to the service hosting the site.



PSWSFA 2025 MEMBERSHIP

**Dues: \$40 per year for entire family*
(March through February - not prorated throughout the year)**

Name: _____ Spouse: _____

Dependents Names and ages

1) _____ 4) _____
2) _____ 5) _____
3) _____ 6) _____

*Family must be living with you

Address: _____

City: _____ State: _____ Zip _____ Home Phone _____

E-Mail: _____ Cell Phone: _____

Boat Name/Call Sign: _____

Total number in your membership: _____

Send this form with a check (payable to PSWSFA) to:

Please check one of the following:

New Address

PSWSFA
P.O. Box 1056
Yorktown, VA 23692-2878

Yes, please add my name to the club membership list to get the newsletter
 No, please do not publish my info, but we never do

being caught along the outer banks. Cobia have also been caught there over the past week or so. Deep dropping has been producing quality tilefish down there as well. NC has different regulations for tilefish than Virginia so make sure you know what they are if you're going to target them.

Speckled trout has been a big disappointment this spring. In the past April and May have been excellent for catching large specks off of Hampton Roads. This year has been terrible. In 5 trips targeting them specifically I have caught exactly ZERO. Not even a bump. I've averaged around 300 trout tagged and released by this time for the past 4 years. This year I have a total of 9 specks tagged and released. None since March. A few are being caught north of us but mostly on cut bait being fished at night. It will probably take another couple of years for the fishery to recover from this past winters fish kill.

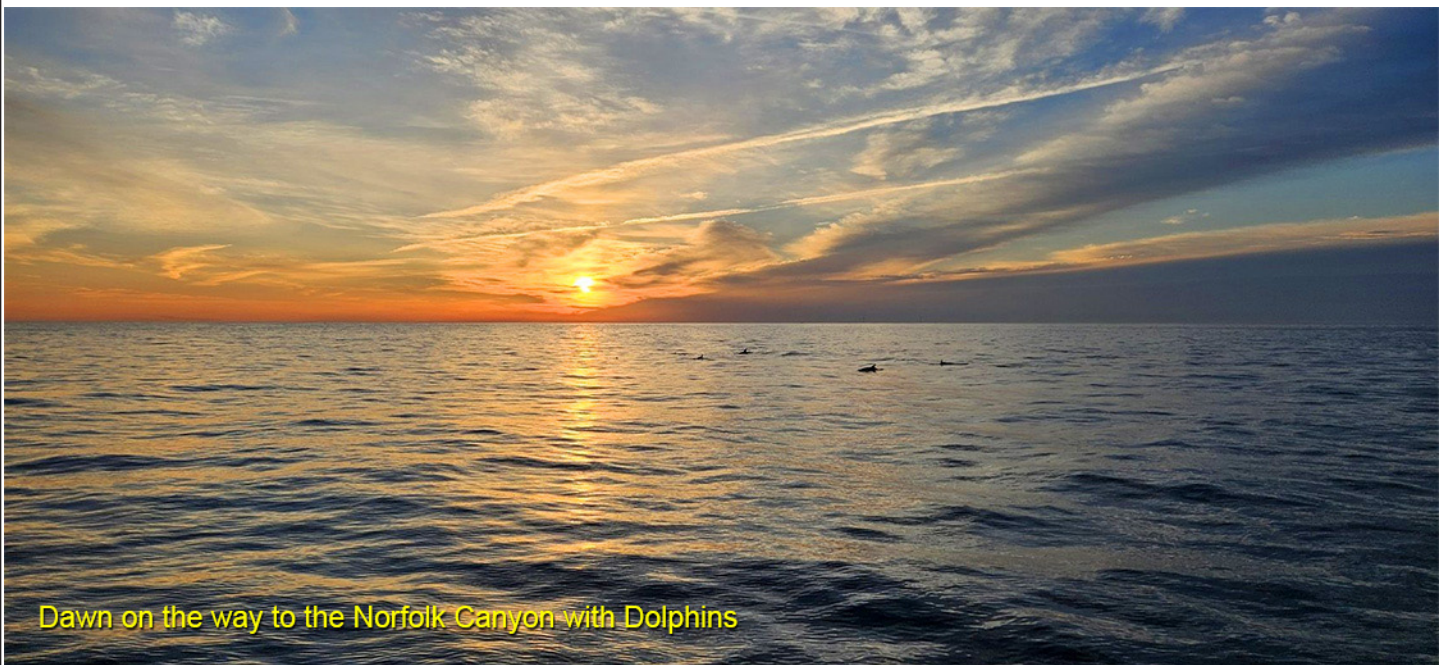
Our sheepshead tournament will be held on July 19th . Once again, we will be looking for volunteers to help as well as participants. Make plans now to support this tournament. One way of supporting is by identifying sponsors for the tournament. Sponsors are the lifeblood of the tournament and financing the club for the following years. If you work for a business or know of a business that might be willing to sponsor the tournament please let Charles Randall, Wally Veal or I know so that we can get the information to them. The sooner the better.

This month's discussion will be a tag team event. The team will be discussing flounder fishing techniques and how they target them. Since the flounder are just migrating into the bay this is perfect timing and a chance to pick up some tips from a couple of guys who catch a lot of them.

Encourage your friends, neighbors and coworkers to attend a club meeting. They might just learn a little bit about fishing and may also want to join the club.

Get out there and fish and try to get a youngster/youngsters out with you. Enter your fish in the monthly tournament and especially the youth entries.

Tight Lines,
Stan

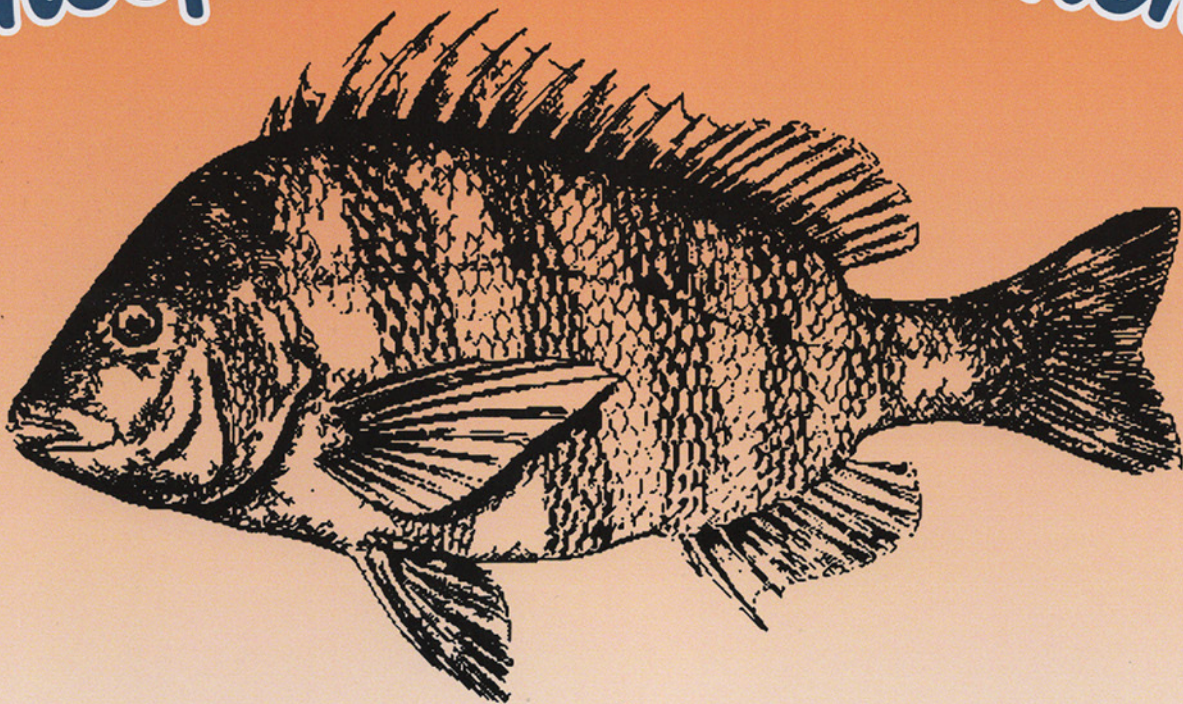


Dawn on the way to the Norfolk Canyon with Dolphins

PSWSFA



Sheepshead Tournament



July 19th, 2025

For information go to PSWSFA.com

Hosted by:

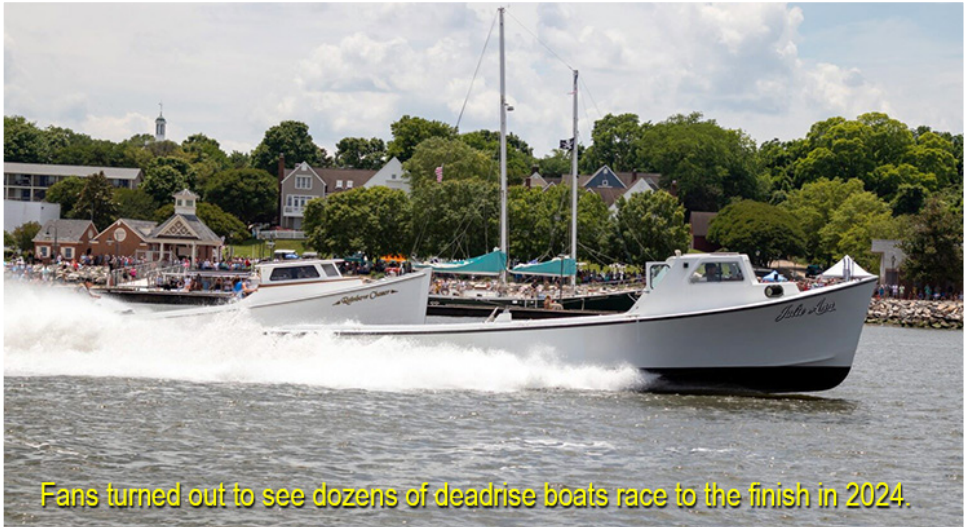
Wallace's Bait & Tackle

To sign up either as a Sponsor or to Join the Tournament go to WWW.PSWSFA.COM at the top of the page mouse over **Tournaments** then click on **Sheepshead Tournament**.

Battle of Yorktown: Workboat Races Expand into Weekend-long Festival

By Bay Bulletin / May 1, 2025

The sight of a graceful deadrise boat plying Chesapeake Bay waters is timeless: a reminder of how many people in waterfront communities still make their living the way their ancestors did. But the sight of more than 40 deadrise boats roaring up the York River, racing for all they've got? That is something to behold.



Fans turned out to see dozens of deadrise boats race to the finish in 2024.

When the Yorktown Workboat Races return this month, the event will be part of an expanded, weekend-long festival celebrating Chesapeake Bay watermen's heritage—spearheaded by the group Workboat Life. Spectators will see the clean lines of the Chesapeake Bay deadrise put to the test as watermen compete for class awards. They'll also see an impressive display of model workboats built from scratch and other art, plus interactive displays on Bay workboats, the seafood industry, and the Bay at large.

The Yorktown Workboat Races were a longtime tradition on the York River that died out in 2005. Workboat Life brought racing back in 2024 after a 19-year absence, and it was a smashing success for the watermen, locals, and Yorktown visitors. This year, Workboat Life and the town are putting together an even bigger event.

Workboat Life began as a Facebook group for Virginia watermen in 2018, and in the last seven years it has swelled to a community 36,000 strong that stretches well beyond the Bay. Founder Allen Holston, a 20-year waterman himself, says, "I know watermen and I know how much they appreciate having a social media presence to communicate, share stories, discuss issues, see pictures of their boats and to see them in action."

After he retired, Holston began making videos of watermen working and posting them on the Workboat Life YouTube channel. Not only did it resonate with Virginia watermen, word spread quickly. "We started local and it started growing, and before you knew it we spread all along the East, Gulf and West coasts and then went international. Workboat Life has become a communication hub for the industry. All [sectors]... regulatory, scientific, environmental, ocean fisheries, inshore fisheries, seafood processors, packing houses, marine supplies, the watermen themselves... everyone participates."

Seeing such strong interest, Holston created spinoff Facebook groups like Working Women of the Water to recognize female harvesters, Watermen Remembered to honor community members who have passed, Old Salt for "old timers" to tell their stories, and Oysters for Sale to give the industry a selling platform.

Continued on page 6

Thanks to encouragement from Yorktown to grow its presence at events, Workboat Life became a nonprofit organization in 2023 with Holston as its president. Its mission is to “promote and celebrate the history and continued use of the Commonwealth of Virginia’s official boat designation, the Chesapeake Bay deadrise.”

Holston says the 2024 return of the Yorktown Workboat Races came because Workboat Life wanted the watermen to have a chance to “gather and have some fun.” It also stimulated Yorktown’s economy, filling hotels, shops, and restaurants.

This year, the first day of the festival is all about engaging the public with “The Waterman’s Way”. Displays, demonstrations, and activities for children of all ages will be offered Saturday, May 31, from 10 a.m. to 3 p.m. at the Yorktown Watermen’s Museum. That evening the organization will hold a private Saltwater Heroes Appreciation dinner for watermen to kick back.

Sunday, June 1, begins with the Workboat Model Show and Art Show, running 11 a.m. to 4 p.m. Talented model builders will display their miniature vessels and compete in the categories of skiff, Fox Hill pound boat, open deadrise, deck boat, rigged, and remote controlled model boats. Paintings and photography will also be displayed and judged.

The festival’s main event, the Yorktown Battle of the Boats, begins at 12:30 p.m. with a blessing of the Fleet and recognition of a handful of Bay buyboats that are celebrating their 100th birthdays this year. The workboat competitors will then parade past the Yorktown waterfront. The deadrise races begin at 1:30 p.m., with a 4 p.m. awards ceremony for the fastest boats.



Painstaking work is showcased at the model boat show.

This year’s Yorktown Workboat Races lean into the town’s American history, going way back to the Siege of Yorktown, the final battle of the American Revolutionary War. Coining this year’s deadrise races “Yorktown Battle of the Boats 2025”, Holston points to the connection between Virginia’s important role in colonial independence and the beginning of the commercial seafood industry. Here is Holston’s historical retelling of the showdown at Yorktown. It begins as Admiral François Joseph Paul, Marquis de Grasse Tilly, heads to the Chesapeake Bay to support General George Washington’s assault on the British.

De Grasse’s fleet was loaded with 3,000 French troops on 37 ships of 28 large battleships, 7 frigates and 2 cutters. Washington directed his troops to Yorktown to surround General George Cornwallis, who intended to knock Virginia out of the war.

De Grasse arrived at the Chesapeake, saw no British fleet and sailed up the James River the morning of Sept. 5, 1781, to unload the troops to take positions around Cornwallis. Several of his

Continued on page 7

ships' officers were ashore, offloading supplies, when the British fleet arrived. Still, British Admiral Thomas Graves failed to take advantage of the vulnerable position the French were in. De Grasse had time to rush his fleet out of the James and organize into a line of battle.

At 4:15 p.m. the Yorktown Battle of the Boats began for control of the Chesapeake Bay. Two hours later as the sun set at 6:30 p.m. they disengaged to assess the damage. Admiral Graves realized his fleet had taken too much damage to reengage

and both fleets drifted south a couple days. Seeing no more action from the British, Admiral De Grasse sailed into the Chesapeake as victor, with control of the Bay. This left General Cornwallis helpless with no support and no other choice, but to surrender to General Washington.

This battle was a decisive blow that resulted in American and French troops securing independence from the British Crown. The colonies soon became states, and Virginia's seafood economy remained a large part of the economy. Many of our waterman families today are direct descendants from this beginning.

Thankfully, the "battle" these modern watermen will enter into on June 1 is not a matter of war; it's all for fun. And from Holston's perspective, they deserve some fun—and some recognition.

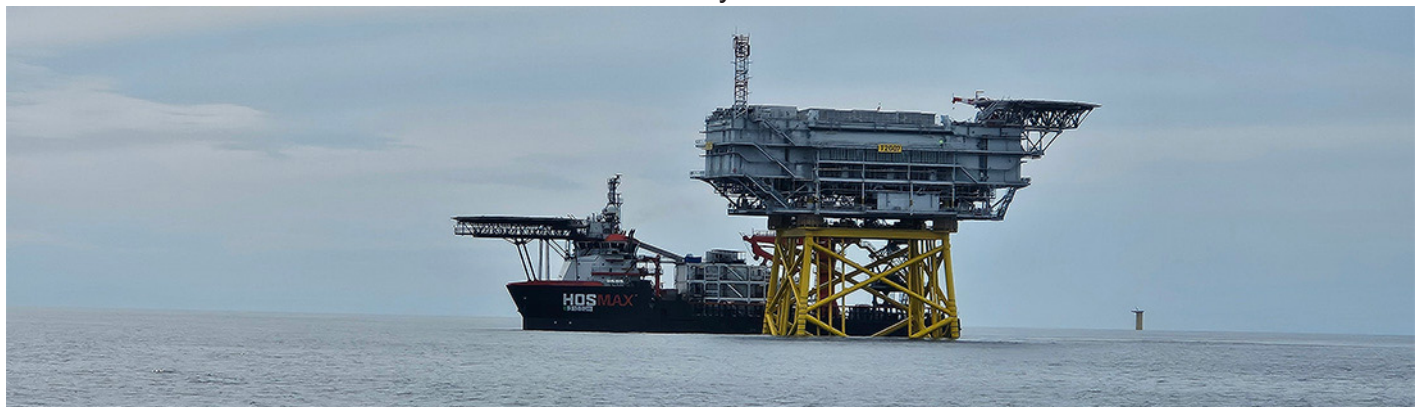
"These Saltwater Heroes, the Virginia commercial watermen, are very competitive and work hard year-round in all conditions putting local, fresh seafood on your table while feeding their family and feeding America!"

Find more details on the Yorktown Workboat Races Battle of the Boats 2025 and surrounding events [here](#).

Note: If you want to dive deeper into the history of these vessels, workboat historian, author, and longtime Chesapeake Bay Magazine contributor Larry Chowning will be on hand during Sunday's events. He'll be signing his 2024 book *Chesapeake Bay Deadrise Boats* and other books he has written about historic boats and the seafood industry.



This 19th-century painting, owned by the U.S. Navy and on display at the Hampton Roads Naval Museum in Norfolk, depicts the battle. Image from the National Park Service



Pamunkey Indian Reservation Named Among U.S. Top 11 Most Endangered Historic Places

By Meg Walburn Viviano / May 7, 2025

The annual list of America's 11 Most Endangered Historic Places has just been released, and a history-rich tribal land in the Virginia section of the Chesapeake Bay is among them this year.

The Pamunkey Indian Reservation, a 1,600-acre sovereign community nearly surrounded by water, ranks among the National Trust for Historic Preservation's list of places in most dire need of saving. As the tribe of Chief Powhatan and Pocahontas, its historical significance is indisputable. As much of the reservation's acreage converts to marshland, the tribe is contending with the possibility of having to relocate.

The Pamunkey tribe is recognized as a sovereign nation by the federal and state government. Of the 100 or so people living on the reservation, almost all are of Pamunkey heritage. The land is home to a tribal museum, cultural center (with plans for a new one), a historic schoolhouse, pottery studio, historic church, and a shad hatchery the tribe hopes to operate again.

The reservation land, once called [Tsennacommahah](#), is valuable to archaeologists, since it has been home to the tribe for 15,000 years and was never ceded to the U.S. government. Archaeological deposits may shed light on lives from thousands of years ago. The Pamunkey River is also home to historic populations of shad and spawning sturgeon, along with rich marsh vegetation, sometimes referred to as the "grocery store" of tribes and foraging people.

The danger the tribe is facing stems from rising waters and sinking land. Of its 1,600 acres, the vast majority of the reservation is marshland. "It is very inundated, very wet," says Kendall Stevens, Cultural Resources Director for the Pamunkey Indian Tribe. The reservation land was originally an island, but in the 1860s a push pile was created in order to build a railroad to the mainland. Creating that extra land mass may have caused more erosion problems, Stevens says. Between sea level rise and land subsistence, some of the tribal elders estimate 20-30 feet of riverbank on the northern edges of the reservation have been lost.

The reservation was chosen for the Most Endangered Historic Places list for this "very demonstrable risk factor" of land loss, considering all the heritage the Pamunkey stand to lose. Stevens tells us, "We're kind of in dire straits. VIMS projected it will be totally unlivable in the next 70 to 100 years. That's a quick timeline... the tribe is aware that relocation is probably going to be on the table in the next generation or so."

The Pamunkey hope that the National Trust for Historic Preservation's recognition will lead to awareness and support for finding solutions. The tribe has already done a good bit of shoreline stabilization work, like planting native grasses and bald cypress trees, a species that grows natively on some Indian reservations and may help preserve the land. These projects are expensive, however, and funding has been hard to get, Stevens says.

The tribe is putting its hope into its new national recognition, which they believe has the potential to be really significant for such a small community.

"There are still people that want to live in the reservation, fully knowing it's probably not a forever place," Stevens tells us. "The Pamunkey River is so important to these people, I can't imagine anyone would want to live anywhere else."

Other Chesapeake Bay landmarks that have been named among America's 11 Most Endangered Historic Places in recent years include Virginia's Jamestown and the Annapolis City Dock.



Virginia Beach Sport Fishing



In May, with water temperatures approaching 70°F along the Virginia coast and in Chesapeake Bay, several fish become more active or start arriving as they migrate seeking comfortable conditions. This temperature is ideal for many inshore and coastal species, marking the transition from colder to warmer water species. Here's what you can expect between now and June, based on water temperatures and weather patterns.

Flounder arrive in the Chesapeake Bay and in southside coastal waters in better numbers in mid to late May. They are daytime feeders, often found in inlets, coastal bays, and near structures like the Chesapeake Bay Bridge Tunnel (CBBT). They hit squid, live bait or cut bait and are a prime target in May as their numbers increase.

Gray Trout or Weakfish become active in the Chesapeake Bay starting in May and remain through November. They range from pan-sized to over 10 pounds, with smaller fish caught by bottom fishing and larger ones by trolling or live baiting. They prefer squid, peeler crabs, shrimp, or live spot.

Croakers arrive in the Chesapeake Bay in late spring, typically May, and are abundant through the summer. They are often caught alongside spots, using light tackle with bloodworms, squid, or cut fish. They are found throughout the Bay, inlets, and surf zones.

Spot arrive in May and are common in the Bay, surf, and inlets. They are small but scrappy, caught with light tackle and baits like bloodworms or fishbites. They are a staple while bottom fishing. They make great live baits for larger species.

Cobia start arriving in the Chesapeake Bay in May as water temperatures rise. The Bay is their spawning destination. They are targeted around navigation markers, wrecks, and the CBBT, often hitting live baits, bucktails or cut bait. Their presence increases through June.

More Red Drum arrive in May, particularly along the Eastern Shore near Cape Charles and around the CBBT. They are often found along channels and are targeted with fresh clam or cut bait. Large schools may be spotted migrating toward the Bay. Sight casting is popular when schools are spotted on the surface.

Black Drum are in the surf and inlets in May to feed and spawn, some reaching weights over 50 pounds. They are caught along the Eastern Shore and near Cape Charles, with fresh clam as the preferred bait.

While Tautog are present earlier, they remain active in May particularly around hard structures like the CBBT island rocks. Larger ones are usually caught on ocean structures. They feed on crabs, shrimp, or clams, but the season closes mid-May (15th), so early May is key for targeting them. It's being posted on social media that on May 9, 2025, Sam Cook might have set a new Virginia state record with a remarkable catch. His fish weighed in at an impressive 26 pounds and was caught using crab for bait.

Speckled Trout may start appearing in the lower Bay in May, though they become more abundant later. They are sensitive to colder water but can be caught in warmer pockets, especially in inlets like Rudee or Lynnhaven, using soft plastics or live bait.

By late May, early June, Spadefish become readily available. They hang in large schools and prefer warm, waters with plenty of structure such as wrecks, reefs, and pilings. Anglers typically use jellyfish or clams as bait to attract spadefish, which are known for their delicate bites.



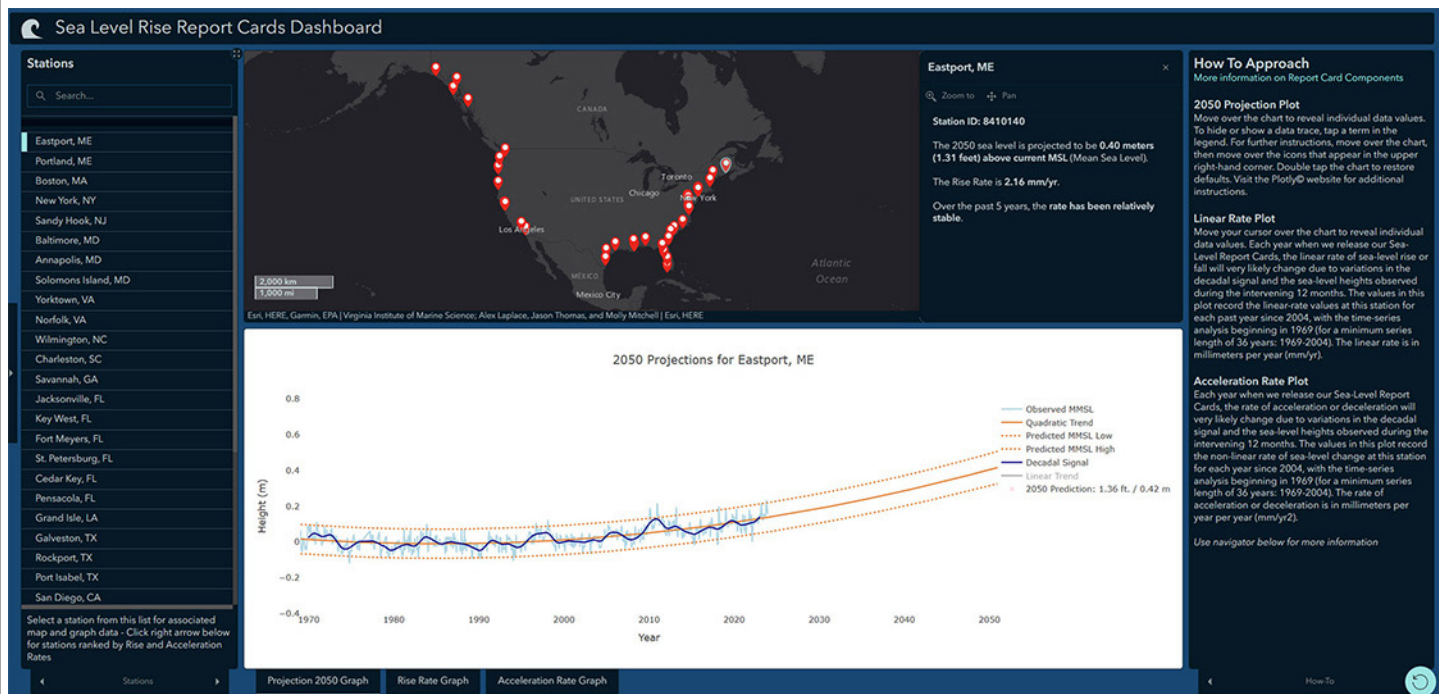
2024 sea level “report cards” map futures of U.S. coastal communities

by John Wallace | May 6, 2025

Featuring four new localities, the updated report cards show past and projected rates of sea level rise and acceleration for 36 U.S. coastal communities in a new, interactive dashboard.

William & Mary’s Batten School & VIMS have released their 2024 U.S. sea level “report cards,” providing updated analyses of sea level trends and projections for 36 coastal communities. Encompassing 55 years of historical data, the report cards aid planning and adaptation efforts by analyzing rates of sea level rise and acceleration at each locality and forecasting 2050 water levels.

This year, the report cards are consolidated in an interactive dashboard and add data from tide gauge stations in Annapolis, MD; Solomons Island, MD; Yorktown, VA; and Fort Myers, FL.



A new, interactive dashboard created by the Center for Coastal Resources Management at W&M’s Batten School & VIMS consolidates sea level rise and acceleration data for 36 U.S. coastal communities.

Most sea level projections are based on an understanding of average global sea level rise. However, sea levels do not rise uniformly across the world. Factors such as geological uplift, land subsidence, ocean currents and other processes all impact regional sea level trends.

“Many people who live near the coast want to know what they can reasonably expect over the next few decades, giving them time to make actionable plans and decisions,” says Molly Mitchell, an assistant professor at the Batten School of Coastal & Marine Sciences & VIMS. “Compared to other predictions based on satellite data and global computer models, our reports are created using observed tide

Continued on top of page 11

gauge data from the past 55 years and reflect the exact experience at the location of the gauge. The annual release of the report cards allows coastal regions to examine if past trends are changing and alter their planning accordingly.”

The reports group localities into East Coast, Gulf Coast, West Coast and Alaskan Coast regions. Each report card shows values for monthly sea level averages along with high-and low-water levels caused by storms and other transient events, as well as a decadal signal showing the influence of longer-term climate patterns such as El Niño. Observed rates of acceleration are factored into future projections and are displayed in comparison to a linear trendline that does not account for acceleration.

The projections also show the range of sea level rise within the 95% confidence interval, which allows individuals and municipalities to plan adequately for the highest predicted rates of sea level rise caused by things like storm surge and tidal flooding.

Overall, most locations continue a trend of accelerating sea level rise. However, Mitchell notes that projections have remained mostly uniform since reporting began in 2018, apart from a few notable exceptions.

“One interesting new trend is the acceleration occurring in southeastern states such as South Carolina and Georgia,” said Mitchell. “We continue to see the fastest rates of sea level rise in Gulf states like Texas and Louisiana, but many of the East Coast stations are accelerating quite quickly, likely due to patterns of water distribution related to glacial melt from the Greenland ice sheet.”

Mitchell also notes that most West Coast localities have been fairly stable, despite past predictions that they would increase rapidly. “This has led to some questions about why,” she said.

Information about the processes most affecting regional sea levels is listed on the Batten School & VIMS website.

Emeritus Professor John Boon launched the sea level report cards in 2018 following the publication of the study [**Anthropocene Sea Level Change: A History of Recent Trends Observed in the U.S. East, Gulf and West Coast Regions**](#), which showed a notable increase in sea level acceleration rates beginning in 2013-2014.

The April Mystery Fish Patagonian Toothfish or Chilean Sea Bass



The Patagonian toothfish is found in the southeastern Pacific and southwestern Atlantic Oceans. It occurs in southern Chile around the coast of Patagonia, in Argentina, and the Falkland Islands. It has also been recorded at Macquarie Island in the southwestern Pacific Ocean and the Southern Ocean at South Georgia and from the sub-Antarctic islands and seamounts of the Indian Sector.

The Patagonian toothfish has a streamlined, fusiform body that has a depth that fits into its standard length 5 to 6.4 times. It has a flattened head with a wide, flat area between the eyes. The snout is longer than the diameter of the eyes. The mouth is large, extending past the middle of the eye. There are two rows of teeth in the upper jaw, the teeth in the outer row being the larger and canine-like. The lower jaw has a row of spaced canine-like teeth. Additional canine-like teeth are found outside the teeth rows at the joint of the upper and lower jaws.

Patagonian toothfish spawn in deep water (around 1,000 m) during the austral winter, producing pelagic eggs and larvae. Larvae switch to a demersal habitat at around 100 m (1 year old) and inhabit relatively shallow water (<300 m) until 6–7 years of age, when they begin a gradual migration into deeper water.



Virginia Recreational Saltwater Fishing Regulations

Last Revised
March 2024



Atlantic Croaker

- Minimum Size Limit: No size limit
- Recreational Bag Limit: 50 per person; additional 50 live bait per customer capacity on for-hire or charter vessels



Spot

- Minimum Size Limit: No size limit
- Recreational Bag Limit: 50 per person; additional 50 live bait per customer capacity on for-hire or charter vessels



Kingfish

- Minimum Size Limit: No size limit
- Recreational Bag Limit: No bag limit



Grey Trout (Weakfish)

- Minimum Size Limit: 12 inches
- Recreational Bag Limit: 1 per person



Bluefish

- Minimum Size Limit: No size limit
- Recreational Bag Limit: 3 per person from shore or a rented or private vessel
- 5 per person on for-hire or charter vessels



Spanish Mackerel

- Minimum Size Limit: 14 inches
- Recreational Bag Limit: 15 per person



King Mackerel

- Minimum Size Limit: 27 inches
- Recreational Bag Limit: 3 per person



Cobia

- Minimum Size Limit: 40 inches
- Recreational Bag Limit: 1 per person or 2 per vessel, whichever is more restrictive. Only 1 fish per vessel may be greater than 50 inches total length.
- Season: June 15 - September 15
- Gaffing prohibited



Summer Flounder

- Minimum Size Limit: Jan 1-May 31: 16 inches
Jun 1-Dec 31: 17.5 inches
- Recreational Bag Limit: 4 per person



Striped Bass

Any person fishing striped bass recreationally shall use non-offset, corrodible, non-stainless steel circle hooks when fishing with bait.

Chesapeake Bay Spring Season

- Size Limit: 19-24 inches
- Recreational Bag Limit: 1 fish per person
- Season: May 16 - June 15

Chesapeake Bay Fall Season

- Size limit: 19-24 inches
- Recreational Bag Limit: 1 fish per person
- Season: October 4 - December 31

Coastal Season

- Size Limit: 28-31 inches
- Recreational Bag Limit: 1 per person
- Season: January 1 - March 31, May 16 - December 31

Select species provided for information purposes only. Not all regulated species are included. All regulations are subject to change. It is the angler's responsibility to know and abide by all current regulations and laws. Check for new regulations before you go fishing.
www.mrc.virginia.gov



Spadefish

- Minimum Size Limit: No size limit
- Recreational Bag Limit: 4 per person



Sheepshead

- Minimum Size Limit: No size limit
- Recreational Bag Limit: 4 per person



Black Sea Bass

- Minimum Size Limit: 13
- Recreational Bag Limit: 15
- Season: Feb 1-29 (permit required);
May 15-July 15, July 27-Dec 31



Tautog

- Minimum Size Limit: 16 inches
- Recreational Bag Limit: 4 per person
- Season: January 1-May 15, July 1- Dec. 31



Speckled Trout

- Minimum Size Limit: 14 inches
- Recreational Bag Limit: 5 per person, only 1 greater than 24"



Red Drum

- Minimum Size Limit: 18 inches
- Maximum Size Limit: 26 inches
- Recreational Bag Limit: 3 per person



Black Drum

- Minimum Size Limit: 16 inches
- Recreational Bag Limit: 1 per person

PSWSFA SPONSORS

PSWSFA would like to thank these sponsors for supporting our 2024 Sheepshead Tournament

GOLD SPONSOR

Family Owned and Operated
Wallace's BAIT & TACKLE
Foxhill, VA (757) 851-5451

GOLD SPONSOR
MULTIPRINT
INCORPORATED

DESIGN • PRINT
SCREEN PRINT • EMBROIDERY
PROMOTIONAL ITEMS

(757) 244-6800
www.multiprintinc.com
orders@multiprintinc.com

GOLD SPONSOR

TROY
MARINE
757-238-8746

SILVER SPONSOR

ALTIST
WELDING & FABRICATION
(757) 848-7003

BRONZE SPONSORS

Bishop Fishing Supply SHIMANO
1215 - T George Washington Memorial Hwy Yorktown, VA 23693
BISHOP
SINCE 1984
FISHING SUPPLY
757-591-9300

LEGASEA
M A R I N E

PACK BROTHERS HOSPITALITY

Dodd RV and Marine
Since 1956

JOSH'S
BAR & GRILL
a great local place for food, fun and friendly faces

Hampton Roads
RV, Auto Body & Fiberglass Repair, LLC
757-915-7808
201c Odd Road Poquoson VA 23662

daddy's
pitmaster bbq

CHANDLER
LANDSCAPE DESIGN, INC.

R. Hayden Smith
FUNERAL HOME

Donated \$150

COASTAL
insurance agency

JKL Designs LLC

G TOWN
BAIT -n- TACKLE
804-684-5599
® LLC

PSWSFA SPONSORS

PSWSFA would like to thank our sponsors for their support



MILLS MARINA



757.898.4411

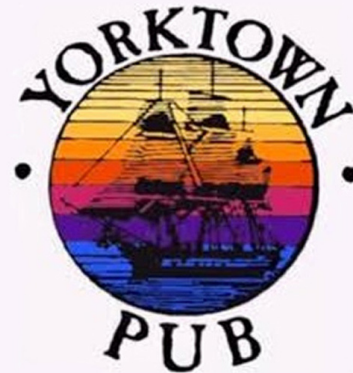


Capt. Michael Hanna, President
mhanna@southernbayyachtsales.com

757-810-7152

<https://www.southernbayyachtsales.com>

FAITH ~ FAMILY ~ BOATS



Andrea's
Italian Restaurant & Pizzeria



STERLING MARINE



L&S Bait Company 1415 E Bay Dr, Largo, FL, 33771

Phone (727) 584-7691 www.shopmirrolure.com



FISH TALES



Darrell Cummins and Sea Bass



Larry Caraway and Black Drum



John Michael Simmerman with his 38" Catch



Dave Brabrand fighting a clump of weeds...and loving it!!



Dave and nice drum



Stan and 35lb Wahoo

Monthly Tournament List March 2025

Black Drum
Chris Harris 42"

Red Drum
Paul Downey 49"

Speckled Trout
Stan Simmerman 26"

Monthly Tournament Contenders	
Species	Min Size
Albacore Tuna	35"
Amberjack	40"
Bigeye Tuna	40"
Black Drum	40"
Blackbelly Rosefish	14"
Blackfin Tuna	25"
Bluefin Tuna	45"
Bluefish	25"
Blueline Tilefish	20"
Blue Marlin	Release
Channel Bass - Drum	40"
Cobia	40"
Croaker	14"
Dolphin	35"
False Albacore	25"
Flounder	22"
Golden Tilefish	30"
Gray Trout	22"
Grouper	16"
Jack Crevalle	36"
King Mackerel	35"
Pompano	12"
Sailfish	Release
Sea Bass	18"
Shark	60"
Sheepshead	20"
Snapper	17"
Spadefish	18"
Spanish Mackerel	20"
Spearfish	Release
Speckled Trout	21"
Spot	8"
Striped Bass	36"
Swordfish	Release
Tarpon	Release
Tautog	18"
Triggerfish	15"
Wahoo	40"
White Marlin	Release
Whiting (Roundhead)	14"
Yellowfin Tuna	35"

**Fish in Red are updated
as of 1 Jan 2025**

Photo taken Oct 2022 by the Editor at Hapuna Beach, Hawaii

Bring your entries to Milton at our monthly meeting by 7:00 pm or send an email or snail mail to the address' on the left (Yellow Box). Please direct any questions to Milton.

MAIL ENTRY FORMS TO:
MR. MILTON HUDGINS
1894 KATIE LANE
HAYES, VA 23072
(e-mail: judygee03@gmail.com)

Deadline for turning in your 2025 entry forms:			
Month of Entry	Deadline (RegMtg)	Month	Deadline (Reg Mtg)
January	18 Feb	July	19 Aug
February	18 Mar	August	17 Sep
March	15 Apr	September	21 Oct
April	20 May	October	18 Nov
May	17 Jun	November	16 Dec
June	15 Jul	December	by Brd Mtg 13 Jan 2026



- Four Ways to Turn in your Forms:
- Hand deliver to monthly meetings or Board Meeting
 - e-mail to judygee03@gmail.com
 - Mail to: Milton Hudgins, 1894 Kate Lane, Hayes VA 23072

OFFICIAL ENTRY FORM

Eligible Species

The fish in red were updated 1 Jan 2025

Albacore Tuna	35"	Pompano	12"
Amberjack	40"	Sailfish	Release
Bigeye Tuna	40"	Sea Bass	18"
Blackbelly Rosefish	14"	Shark	60"
Black Drum	40"	Sheepshead	20"
Blackfin Tuna	25	Snapper	17"
Bluefin Tuna	45"	Spadefish	18"
Blueline Tilefish	20"	Spanish Mackerel	20"
Bluefish	25"	Spearfish	Release
Blue Marlin	Release	Speckled Trout	21"
Channel Bass	40"	Spot	8"
Cobia	40"	Striped Bass	36"
Croaker	14"	Swordfish	Release
Dolphin	35"	Tarpon	Release
False Albacore	25"	Tautog	18"
Flounder	22"	Triggerfish	15"
Golden Tilefish	30"	Wahoo	40"
Gray Trout	22"	White Marlin	Release
Grouper	16"	Whiting (Roundhead)	14"
Jack Crevalle	36"	Yellowfin Tuna	35"
King Mackerel	35"		

I hereby certify that the following statements are the truth and the rules of this contest have been complied with. (See next page for the rules).

NOTE: Copies of release citations with this form are acceptable

Required Information

Tournament: _____ Fish: _____

Date Caught: _____ Time Caught: _____ AM or PM Length: _____

Name (printed): _____ Circle One: Adult Youth

Signature: _____ Witness: _____

Optional Information:

Weight _____ Where Caught: _____

Weigh Master's Signature: _____

MEASURING INSTRUCTIONS

With the fish lying on a flat surface, measure in quarter inch increments, from the tip of the mouth to the tip of the tail with the fish in a natural position and the mouth closed. All paid club tournaments will be judged by weight.



FISHING CONTEST RULES

1. Contest will run from January 1 to December 31. Only fish caught for recreational purposes, in accordance with state regulations, are eligible.
2. The territorial limits for this contest shall be from Ocean City, MD to Morehead City, NC. Slight variations north or south of these limits will not disqualify entry.
3. This contest is open only to PSWSFA members and their families whose dues have been paid before the catch. Youth anglers must be age 15 or less on the date of the catch. Youth entries must also meet state minimum requirements.
4. Only fish caught on hook and line, rod and reel are acceptable. No assistance at the rod or line shall be permitted, except holding the leader while the fish is being gaffed or boated.
5. There are no restrictions on tackle with the exception that power reels are not permitted.
6. Awards will be made for fish caught each month (1st through last day) at the next monthly meeting. All entries must be in the hands of the tournament chairman by the beginning of the meeting. A later entry will not be accepted. Only monthly entries are eligible for awards.
7. Acceptability of fish entered in this contest is to be entirely within the discretion of the Tournament Committee or the Board of Directors.
8. In case of a tie, the first fish caught will win.
9. Signature of witness of release must accompany entry or release.
10. November and December entries must be submitted received by January 10.
11. Monthly prize money must be picked up within 3 months after being announced.
12. A person who enters fish into another fishing club is ineligible to enter fish into the PSWSFA monthly tournament.

Angler of the Year Award

The Angler of the Year Award is designed to honor the fisherman who consistently submits qualifying entries. The Tournament Committee will recommend Angler of the Year candidates and the PSWSFA Board will make the final Angler of the Year determination.

Angler of the Year Scoring System

- 2 points will be awarded for each species of fish entered for the monthly contest. The fish must meet the club's minimum length to qualify, including all release entries.
- 2 points will be awarded when an entry is accompanied by a copy of a State Fishing Tournament Citation.
- 2 points will be awarded for any fish that wins the monthly contest in each species.
- 6 points will be awarded for the 1st place annual award winner in each species.
- 4 points will be awarded for the 2nd place annual award winner in each species.
- 2 points will be awarded for the 3rd place annual award winner in each species.
- 5 points will be awarded for the 1st place winner of any PSWSFA tournament.
- 3 points will be awarded for the 2nd place winner of any PSWSFA tournament.
- 1 points will be awarded for the 3rd place winner of any PSWSFA tournament.
- 5 points will be awarded for any fish that becomes a new club or state record.

Anglers are limited to 3 fish per species.

Those fish with the highest point value will be entered in the Angler of the Year point system.

Fish of the Year Award

The Tournament Committee will make Fish of the Year recommendations to the PSWSFA Board of Directors. If in the opinion of the Board of Directors, no fish is deemed worthy of Fish of the Year, no award will be made. Regardless of the method used to determine Fish of the Year, the decision of the PSWSFA Board of Directors will be final.

Critter of the Year Award

Any unusual catch submitted by a club member will be eligible for award when approved by the PSWSFA Board of Directors.



2025 PSWSFA TOURNAMENTS



Download "Official Entry Form" at

[Monthly Tournament - Peninsula Salt Water Sport Fisherman's Association \(pswsfa.com\)](http://pswsfa.com)

FOR ALL TOURNAMENTS

You must register prior to fishing and use the PSWSFA official monthly entry form

Questions Contact: Tournament Director Rick Wineman: rick@getanetsportfishing.com or 757-268-1539

<p>Bishop's Trophy Red Drum Tournament April 1st – May 31st, 2025 Must Receive Completed Form no later than the Board Mtg. June 10, 2025 See Rules below for Catch and Release fish totals. (Witness or photo)</p>	<p>Club Multiple Species Tournament June 1st – 30th, 2025 Angler who catches the most saltwater species in a single day Must Receive Completed Forms no later than the Board Mtg. July 8, 2025</p>
<p>Youth and Ladies Croaker/Spanish Mackerel Tournament July 1st -31st, 2025 Free Tournament for Lady and Youth members/Guests (Do not need to register to participate) Must Receive Completed Entry Forms no later than the Board Mtg. August 12, 2025</p>	<p>Sheepshead Tournament July 19th, 2025 Separate paid entry tournament. Details and rules to be announced. Rules and fees listed below do not apply to this tournament.</p>
<p>Don Forman Club Cobia Tournament sponsored by Bishop Fishing Supply August 1st -31st, 2025 Must Receive Completed Form no later than the Board Mtg. Sept. 9, 2025. See Rules below for weight tournament</p>	<p>Club Spot Tournament September 20th – 21st, 2025 Weigh in: 2:00pm Sept. 21st at (Legasea Marine) All entries will be weighed using the same club scale followed by the Annual Club Picnic Spot Tournament - Two categories with 1st – 3rd place winners: "ADULT ENTRIES" and "YOUTH ENTRIES" (Anglers for the Spot Tournament must be present to win) RSVP by Sept. 19th if you are coming to the Annual Club Picnic to the Tournament Director</p>
<p>Club Puppy Drum Tournament October 1st – 31st, 2025 Most number of Spots Wins (photos required) Must Receive Completed Forms and copies of photos no later than the Board Mtg. Nov 11, 2025</p>	<p>Wilcox Bait and Tackle Irv Fenton Rockfish Tournament December 1st -31st, 2025 Must Receive Completed Form no later than Jan. 13, 2025 See Rules below for weight tournament</p>

MAIL ENTRY FORMS TO: MR. MILTON HUDGINS, 1894 KATIE LANE, HAYES, VA 23072 (e-mail: judyqee03@gmail.com)

Fishing Around the World

When you're on vacation in Portugal, this is what your day might look like – lounging on a white-sand beach, sipping sweet port wine, and admiring the sunset. And then, the next day, you're fighting a 500 lb Marlin somewhere in the Atlantic bluewater. That's Portugal for you – the land of beautiful opposites. And if you're a seasoned angler, you should have fishing in Portugal on your bucket list.

The Portuguese love fishing and eating fish, so spending time on the water is second nature to them. This is what makes them incredible fishermen and guides. Saltwater fishing is what put Portugal on the fishing map.

Portugal's fishing scene offers a premier Blue Marlin bite. Deep sea fishing for these monsters earned the country its reputation.

Blue Marlin come into the Portuguese waters in July and they stick around until October. During the high season, 500 lb Marlin are an everyday occurrence, and anything from 600–900 pounds is also in the cards. If you're lucky, you'll stumble upon a 1,000 lb Blue Marlin. White Marlin are common as well, though they're usually in the 50–100 lb range.

To find the best bite, start your trip from the Azores archipelago (950 miles from the mainland) or Madeira Islands (669 miles from the mainland). From there, you'll have the best access to the most productive Marlin bite.

You'll target them by trolling and when you get one on the line, you'll need all your strength and a fighting chair to get your catch close to the boat. Most Marlin are released after you've snapped a quick photo with your trophy.

Trust us when we say, there's nothing like Marlin fishing in Portugal. Once you give it a go, you'll be hooked for life!



So you think you know
your Fish
Name this Fish?





As a member of Peninsula Salt Water Sport Fisherman's Association
a BoatU.S. Cooperating Group, you are invited to become a BoatU.S. Member
at a special rate:

\$15 Boat U.S. Membership Dues and 10% off Water Towing Services

BOAT U.S. COOP GROUP #: Contact Gary Donaldson at
GaryD66@Cox.Net
For the PSWSFA Coop group #

NEW MEMBERS

Sign up online at BoatUS.com/Join
(enter your BoatU.S. Coop Group #
on the first page of the application)

CURRENT MEMBERS

Not receiving the discount? Email
Membership@BoatUS.com

MEMBERSHIP BENEFITS INCLUDE:

- 24/7 Dispatch to over 600 towboats in 300+ ports nationwide
- Marine insurance for boaters with 24/7 claims service
- Discounts on fuel, slips, repairs & more at over 1,200 boating businesses nationwide
- Subscription to *BoatU.S. Magazine* – 6 issues per year

Visit BoatUS.com/Membership to learn about all benefits
and services offered to BoatU.S. Members.

MS11 8/11



INSURANCE



DISCOUNTS



MAGAZINE



SAFETY



ADVOCACY



TOWING



TRAILER ASSIST



DISCOUNTS

Directions to PSWSFA Meeting

**Former St Mark's Episcopal Church
Now used by Peninsula Baptist Church**

From 64 (either direction) take the Mercury Blvd exit towards the James River Bridge (West) stay in the right hand lane and turn right at the light onto Todds Lane. Go past Zaxby's chicken about 400 ft and the driveway to the church is on the right. A new Peninsula Baptist Church sign is on the lawn just short of the driveway.

If you come to the traffic light at the intersection of Cunningham you went to far. Turn right on Cunningham and look for the Cunningham entrance to the church (500ft). If you miss it you will need to do a U-turn on Cunningham and go left onto Todds Lane.

The church driveway is just short of the Bercuese Funeral home entrance or just after it if coming from Cunningham.

Scan Link with your phone to Pay Dues. It costs a bit extra though.



WHAT'S UP NEXT & BEYOND



3rd Club Meeting 20 May 2025 - Flounder Fishing talk by Mel Richardson and Kenney Meyer



19 July 2025: Sheepshead Tournament

NEW ADDRESS

PENINSULA SALT WATER SPORTS FISHERMAN'S ASSOC.
P.O. Box 1056
YORKTOWN VA 23692-2878

