

The PSWSFA is a family-oriented fishing club established in 1957. Our meetings are held on the 3rd Tuesday of each month (March-Dec.) at 7:00pm. The meetings are free and open to the public and are a great place to swap stories with other local fishermen, find new fishing partners and plan trips together. We have raffles with nice giveaways-donated by local businesses plus prizes we buy ourselves. Each month we have speakers sharing their experience on one of the local fisheries. Come join us and get to know some of the other fishermen in your local area. Directions on last page. You can visit us at www.pswsfa.com.

Next Meeting

18 March 2025 7:00pm

We are looking for a big turnout at the club's annual **Awards Banquet on 22 February**. Please check out page 5 and print that puppy out and send it in with a check for the appropriate amount a week before February 22nd, Please. The food will be awesome as will the honor of your company. We can only accommodate 75 so act early. Or, Go online at: <https://my.cheddarup.com/c/pswsfa-annual-club-banquet/items?cart>

On page 4 is a flyer for George Poveromo's lecture series on 1 March 2025. There are two places on the bottom of the page with links to the site as well as who is speaking. It includes Stan Simmerman and Dr, Ken Neill plus several others. They will be speaking on all of the major fish species being caught in the bay and offshore.

We had a pretty decent turnout at the Boat Show this year. Not as good as last year but luckily Sunday picked up. The Rod and Reel combo was won by Lenny Rudow from Rudow's FishTalk up in Annapolis MD. It's a great publication and you'll see bits of it in the Chumline each month. The picture of Lenny and the rod is on page 17. It was sent to us by Lenny since he wasn't at the show on Sunday.

Stay well, Mike the Editor

FROM THE PRESIDENT

January certainly flew by. There is a lot going on this month and next. This year's banquet will be held on February 22nd and seating is limited to 75. There are a lot of folks being recognized with a number of awards and I hope to see you all there.

The PSWSFA website has information about the banquet, and you can even utilize an online tool (CheddarUp) to make your reservations and pay. It's easy to do and much more convenient than mailing a check. The final head count has to be in to the caterer by February 16th so please make you reservations in quickly.

As mentioned above, other events are upcoming. First The Great Bridge Fishing Flea Market will be March 1st as will the George Poveromo Saltwater Series Seminar. Then on March 8th there will be Poquoson Kiwanis Club Fishing and Crafts Flea

Market. We will need support from you the club members to man the booth and sell raffle tickets at both flea markets. Ken and I will be speakers at George Poveromo's seminar, and I have been asked to give a seminar on speckled trout fishing at the Poquoson Flea Market again this year so if you can attend, I'll be giving out some new secrets about specks and how to target big fish.

We participated in the Virginia Beach Boat show January 31st through February 2nd. I would like to thank Mike Frielingsdorf, Wally Veal, Charles Randall, Ronnie Wilson, Richie Moore and Darrell Cummings who assisted me over those three days. We raffled off another beautiful rod and reel combination and raised several hundred dollars to support the club. The winner of the raffle was Mr. Lenny Rudeu from Fish Talk Magazine. We also had several folks interested in joining PSWSFA and I look

Continued on page 3

2024 Club Officers

Stan Simmerman
President

Milton Hudgens
Vice President

Wally Veal
Secretary

Christina Grice
Treasurer

Danny Forehand
Past President

Board of Directors

Ronnie Wilson
Gary Donaldson
Rick Wineman
Charles Randolph
Mike Frielingsdorf
Richie Moore
Paul Downey
Nicole Ambercrombie
Johnny Boyd
Gerald Abrams (alt)

Please Note: March is fast approaching and dues will be due. If you can't make it to the meeting scan the QR code below with your phone's camera and it will take you to the site where you can pay your 2025 dues online. However, there is a small fee which goes to the service hosting the site.



PSWSFA 2025 MEMBERSHIP

**Dues: \$40 per year for entire family*
(March through February - not prorated throughout the year)**

Name: _____ Spouse: _____

Dependents Names and ages

1) _____ 4) _____
2) _____ 5) _____
3) _____ 6) _____

*Family must be living with you

Address: _____

City: _____ State: _____ Zip _____ Home Phone _____

E-Mail: _____ Cell Phone: _____

Boat Name/Call Sign: _____

Total number in your membership: _____

Send this form with a check (payable to PSWSFA) to:

PSWSFA
P.O. Box 5194
Newport News, VA 23605

Please check one of the following:

- Yes, please add my name to the club membership book
- No, please do not publish my information

Presidents comments continued from page 1

forward to seeing them at the March meeting.

The cold weather and winds certainly put a damper on fishing. Water temperatures dropped significantly, and we have suffered another extensive cold stun event that has killed a huge population of speckled trout. Water temperatures in a majority of the areas where trout winter over dropped well below the 38 degree mark. The cold water has also affected puppy drum with several areas seeing dead pups and trout. All is not doom and gloom. The warmer temperatures the first week of this month seem to have saved a fair number of trout and a large number of reds.

Folks are catching puppy drum in Rudee and the Elizabeth as well as a few other areas. Trout catches are very scarce but as the water warms, I expect we should start seeing some trout around. The warm water discharge from Surry power plant has probably saved a large population of the winter over there.

On a positive note, the bluefin are still in the area but mostly south of Virginia Beach. North Carolina and especially Hatteras has had an awesome bluefin bite as well as blackfins and false albacore.

The February seabass season is going on, but I haven't been able to get out there yet. Tog should also be available on the offshore wrecks. Ken Neill and I did get out to the triangles to try for tog the end of January but the water over the triangles was 43 degrees. Togs were not eating. Ken managed to catch two seabass. One was small and one was big enough for a picture before being released. I caught nothing.

We will be having another Sheepshead tournament in 2025, and this one should be bigger and better than last years. The committee will be hard at work getting ahead of the power curve for this year's tournament and sponsor letters will be going out to businesses early this year. I encourage you to help find as many sponsors as possible. Sponsors are the lifeblood of the tournament and financing the club for the following years. If you work for a business or know of a business that might be willing to sponsor the tournament please let Charles Randall, Wally Veal or me know so that we can get the information to them.

Get out there and fish and try to get a youngster/youngsters out with you. Enter your fish in the monthly tournament and especially the youth entries. I look forward to seeing you at the banquet.

Tight Lines,
Stan





38th Annual!
Salt Water
 SPORTSMAN
NATIONAL SEMINAR SERIES 2025
 Presented by
 Bass Pro Shops **MAKO**



AMERICA'S NUMBER 1 SALTWATER FISHING SEMINAR TOUR

Inshore - Near shore - Offshore!

March 1, 2025 – Hampton, VA
Hampton Roads Convention Center
 1610 Coliseum Dr., Hampton, VA 23666
SATURDAY, 9:00 a.m. - 3:00 p.m.

FEATURING GEORGE POVEROMO

HOST OF WORLD OF SALTWATER FISHING ON DISCOVERY!

Along with: Stan Simmerman, Dr. Ken Neill III, Anthony "AJ" Burns, Harry Vernon III, Ric Burnley, Captains Bill Pappas, Kenny Louderback, Russ Kostinas, Zachery Hoffman, Mike Goodwine, David Wicker and Alan Wenzel.

A \$65.00 TICKET INCLUDES:

- Over \$ 200 in value!
- Five hours of fishing instruction from leading National and Regional angling authorities!
- One Year subscription or extension to *Salt Water Sportsman*!
- New Textbook!
- Roffs Ocean Fishing Forecast Analysis!
- \$10.00 Bass Pro Shops discount card on purchase of \$ 75.00 or more!
- Bottle of OrPine Wash & Wax!
- Bottle of Star tron Fuel Additive!
- Star brite boat care products!
- Chances to win thousands of dollars' worth of door prizes!

PLUS: A chance to win a Florida Keys fishing trip at each location and a chance to win a Mako Pro 17 Skiff!



DON'T RISK A SELLOUT - RESERVE YOUR SEAT TODAY!

To see the Speakers, click here: <https://nationalseminarseries.com/content.php?pid=26>

To sign up for tickets click above or below
NationalSeminarSeries.com



2024 ANNUAL AWARDS BANQUET

Saturday, 22 February 2025

Regular Club Meeting Hall

2605 Cunningham drive

Hampton, VA 23666

6:00 - 10:00pm

Social Hour- 6:00pm - 7:00pm

Dinner: 7:00pm - 8:00pm

Awards and Raffles to follow

Please Print

Member: _____

Spouse/Significant Other/ 1 Guest _____

Name of Guest/s or Member _____

Children: _____

How Many:

\$20 for Member: _____ \$10 Children (Ages 3-10) 2 and under Free _____

\$40 for Guests _____

Buffet Includes Pulled Pork, Beef Brisket, Fried Chicken, Mac-n-Cheese, Corn Muffins, Green Beans & Dessert

Total Number Attending _____ Amount Enclosed \$ _____

Email Address or Phone number for Confirmation: _____

Mail this form along with a check made out to PSWSFA Postmarked by 13 Feb 25 to guarantee dinner.

Send To: Christina Grice P.O Box 32 Gwynn, VA 23066 For questions call Christina at 757-869-7238

Please don't call for reservations. Reservations must be in writing OR online <https://my.cheddarup.com/c/pswsfa-annual-club-banquet/items?cart>

Design Revealed: Rebuilt Key Bridge to Become State's First Cable-Stayed Bridge

By Meg Walburn Viviano / February 4, 2025



ARTISTIC DAYTIME AERIAL VIEW WITH DOWNTOWN AND PORT BEYOND

Less than a year after the container ship M/V Dali struck the Francis Scott Key Bridge and caused a deadly total collapse, Maryland and federal leaders have revealed the design of the new bridge that will be built to replace it.

On Tuesday, Maryland Governor Wes Moore showed off renderings of the new bridge, which he said “honors the architectural tradition of the Francis Scott Key Bridge” while modernizing it with cables running from the deck to a pair of towers. It also raises the clearance for large vessels, going from the old bridge’s clearance of 185’ to a new clearance of 230’ at high tide.

Moore pledged that, as the original bridge was built in 1977 using the most advanced industry standard and best materials available at that time, the new bridge will also be “constructed in accordance with the most advanced industry standards and with the best infrastructure design.” He said, “We are going to use the best materials available and are going to employ many Marylanders to get it done.”

Transportation leaders are wasting no time in getting the project going. Maryland Lieutenant Governor Aruna Miller, who is a former transportation engineer, said that preconstruction is already underway on both land and water, with demolition set to begin this spring.

“Soon Maryland’s first cable-stayed bridge will rise,” she said. A cable-stayed bridge is one in which the weight of the deck is supported by a number of cables running directly to one or more towers. The Arthur Ravenel Jr. Bridge is a famous example in Charleston, South Carolina, and the Brooklyn Bridge is a hybrid cable-stayed bridge. This type of bridge is typically cost-effective and allows for a faster construction time compared to other bridge types.

Maryland Transportation Secretary Paul Wiedefeld says cost-effectiveness and construction time

Continued on page 7

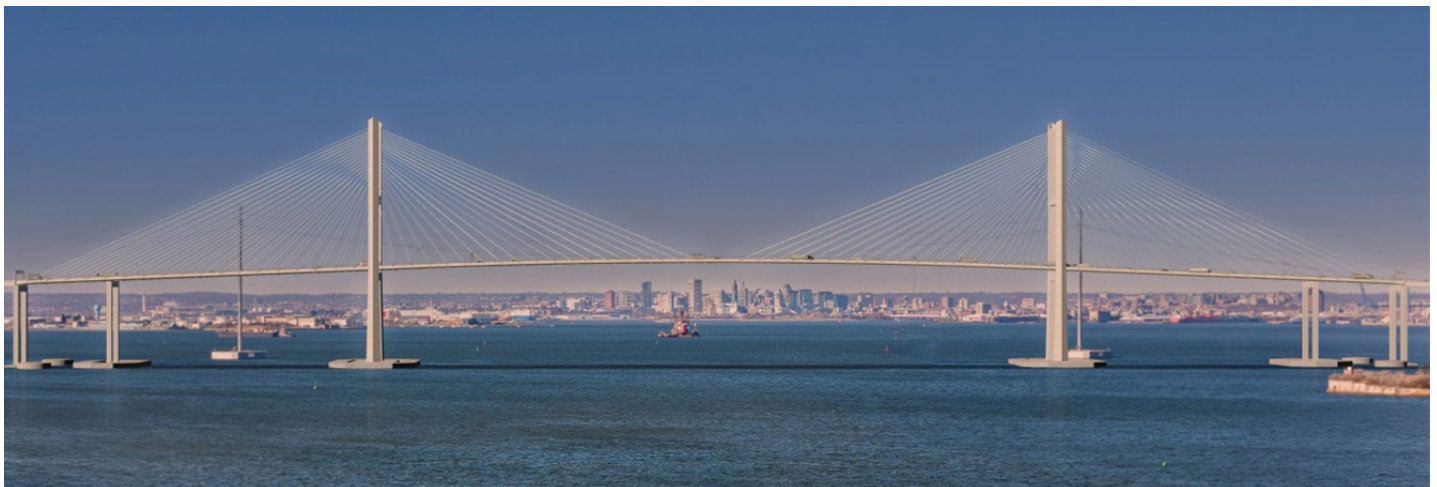
are two of the biggest considerations for this project. Shortly after the collapse, the federal government pledged to fully fund the bridge rebuild, freeing up \$60 million in immediate relief to serve as an initial down payment for reconstruction, Federal Highway Administration Maryland Administrator Valeria Remezova said. Gov. Moore also noted that the Maryland Attorney General has filed suit against the owners of the M/V Dali to make sure Marylanders don't shoulder the cost of the new Key Bridge.

Time is of the essence for the bridge's reconstruction. The Key bridge was a major artery for the Baltimore region, and a lifeline to road traffic into and out of the Port of Baltimore. The bridge's loss is being felt significantly by the trucking industry. Maryland Motor Truck Association Executive Vice President Armand Patella cited a recent study by the University of Maryland and Morgan State University which found the Key Bridge collapse will increase costs for the trucking industry by \$92.8 million in 2025 alone. That makes almost \$450 million in additional expenses between now and the new bridge's expected opening in 2028.

Miller said the new bridge is "optimized" to meet industry needs for the region now and for the years to come, calling it a 100-year bridge. "While this is a beautiful bridge, it will also be a working bridge for a working city." The design is still preliminary, and project leaders plan to work with the community for input on aesthetics. They said the public will be able to weigh in on design decisions like lighting, steel girder color, and artwork to add color and leave Baltimore's "mark" on the new bridge.

While leaders were not ready to release details on how the bridge will be protected from future ship strikes, Wiedefeld says the bridge will be up to modern standards for protection, but it may not be with dolphins (structures meant to serve as a barrier keeping vessels from hitting the bridge itself.) The old Key Bridge dolphins were a subject of scrutiny after the disaster that killed six construction workers and shut down the port.

The next big step in the project will be the demolition of the bridge parts that still remain near each shore of the former bridge. Wiedefeld said an updated schedule and budget will be released in the next month or two.



Virginia's False Cape Becomes Newest (and Maybe Most Remote) Civil War Trails Site

By Meg Walburn Viviano



Jason Saffer of Civil War Trails puts finishing touches on the sign marking Virginia's newest Civil War Trails site.

Virginia's False Cape State Park, already known for its six miles of unspoiled white-sand beach, now has a new claim to fame. It is the nation's newest stop on the Civil War Trails. And it may be one of the most remote Civil War Trails site in the nation, too.

False Cape, the southernmost Virginia State Park, is on a mile-wide barrier spit between Back Bay and the Atlantic Ocean, in southern Virginia Beach near the North Carolina border. It has over 15 miles of hiking and biking trails, which allow for views of the beaches and dunes, maritime forests, marshes, and the Bay. In fact, hiking, biking and boating are the only ways to access False Cape State Park, aside from a tram that runs from Back Bay National Wildlife Refuge to the Barbour Hill area and Wash Woods historic site in the park.

While all of the trails have beautiful views, one will take you to a significant site in Civil War history. If you hike nearly six miles from the parking lot, cross over a dune, go past the park's primitive campground, and head towards the breaking surf, you'll find the Maple Leaf Escape site.

During the Civil War, dozens of Confederate soldiers and officers who were being held prisoner made a break for it at this spot. According to the state park, the 70 Confederates were being transported as Prisoners of War on the USS Maple Leaf in 1863. They managed to escape, but found themselves isolated in a remote and sparsely populated area near the North Carolina border. Southern sympathizers



helped them escape to the safety of North Carolina.

The Maple Leaf was shipwrecked in 1864 in the St. John's River in Jacksonville, Florida when it hit a Confederate mine. This National Historic Landmark still sits in the middle of the St. John's River 12 miles south of downtown Jacksonville.

While False Cape State Park always indicated the site of the Maple Leaf Escape on its trail maps, it is now officially part of the Civil War Trails, with an interpretive historical marker. Civil War Trails is a six-state tourism "program "trail" that marks more than 1,530 Civil War sites. There are 570 in Virginia alone, but this is the first in Virginia Beach.

"Now having a physical marker at the location enables us to preserve the Civil War history of False Cape and lets park guests explore, learn, and embrace the lessons of courage and unity from this daring account," says Rachel Harrington, Chief Ranger of Visitor Experience at False Cape State Park.

Civil War Trails works together with local and state tourism offices to distribute hundreds of thousands of map guides leading people to the Civil War sites each year. To ensure people find their way to the remote (but historically accurate) Maple Leaf Escape site, the park and Civil War Trails, Inc. are working on a system of "directional trailblazers."

Tourism leaders say sites like this help draw visitors during non-peak season. "Adding this site to our list of amenities will help drive travel to Sandbridge during the offseason," says Virginia Beach Convention and Visitors Bureau strategist Alexander Smith.

If you want to find the historical site for yourself, you should park at 4005 Sandpiper Rd., Virginia Beach to begin your hike. For more information about visiting, call False Cape State Park at 757-426-7128. You can order a free Civil War Trails brochure at civilwartrails.org.



A lot of anglers have been heading to Rudee Inlet to fish for red drum and the bite has been fairly good. Resident reds are hanging around docks and deeper sections of the inlet. The inlet is not very big, so it can get crowded at times. Anglers are reporting that the reds have been willing to hit fresh shrimp and mullet along with several artificial lures. The key when lure fishing in the winter is to slow down your retrieve and bounce it along the bottom. While Rudee is a popular destination, the reds can be found in other tributaries as well including Lynnhaven Inlet and the Elizabeth River. Our speckled trout were hit hard by the cold in January that caused a lot of fish to die. Temperatures have warmed up slightly, but the fish that survived are still not very active. Anglers have seen them schooling at times in the shallows trying to warm up in the sun and it will probably be best to give them a break until water temperatures rise. North Carolina even closed their speckled trout season for the time being due to their cold stun event.

The fishing for sea bass has been red hot out of Virginia Beach and the special February black sea bass season has allowed anglers to box a lot of nice fish. The Virginia Marine Resources Commission has allowed the special season to resume this year which allows harvest until the end of the month. The season will then be closed until May 15th. Anglers looking to participate can find more information about reporting and permitting requirements on the Recreational Reporting Fact Sheet. Playin Hookey Charters had the best sea bass trip we saw this week with a boat limit of 90 fish. Five pounders have been caught since the season opened and there seems to be plenty of keepers to go around.



Slot reds are still active despite the cold winter weather.

Save the Date!
2025

Virginia Charter Boat Workshop

at the Virginia Institute of Marine Science, Gloucester Point

Saturday, March 22

Featured speakers:

Atlantic States Marine Fisheries Commission
Virginia Marine Resources Commission
Virginia Saltwater Sportfishing Association
Virginia Institute of Marine Science
& MORE!

Workshop
Link

Space limited, register for free:
<https://forms.gle/32dR6T6eSEWaz9Rr5>

Questions? susanna@vims.edu

Got triggers?

The Virginia Institute of Marine Science is recruiting conservation-minded anglers with excellent catch & release handling skills to help us take fin clips for a Grey Triggerfish genetics study.

To learn more email:
susanna@vims.edu



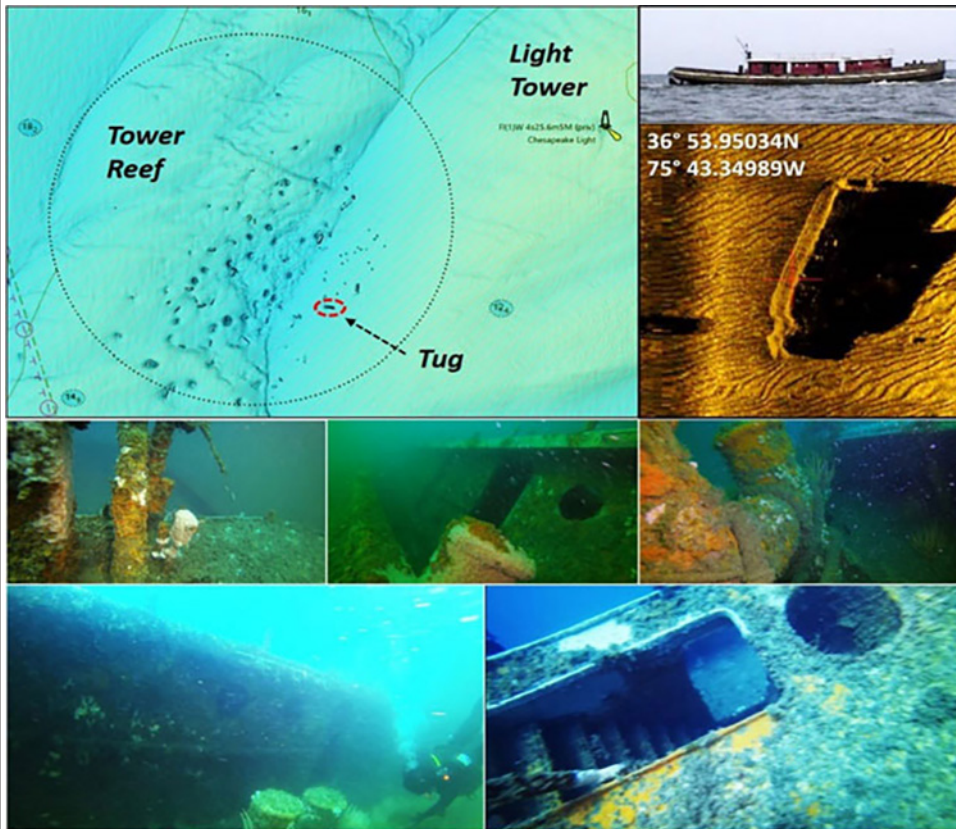


Chart 1: Top left – BAG image of Tower Reef under ENC Chart. Top right – VMRC deployment and sonar image of J. B. Eskridge. Middle and bottom – Underwater photos of tug. Underwater photos by Jerrod K. Jenkins.

Diver websites and YouTube videos are great resources for researching bottom structure that attracts sportfish and for assessing the performance of artificial reefs. Underwater photos and videos show the actual physical condition, extent of colonization by marine organisms, and types and species of fish present. Used in conjunction with sonar images as available, a more complete understanding of individual reefs emerges. With this in mind we're taking another look at Tower Reef and also the Chesapeake Light Tower off the Chesapeake Bay entrance, this time through the photography and underwater videography of diver Jerrod K. Jenkins, JKJ Diving. (The full videos are posted on YouTube).

Tower Reef, located as it is in the Bay Entrance with depths in the 45' to 65' range, is in a high physical energy zone. Turbulence from storm waves reach all the way down to the bottom. So, it is not surprising that sonar images show scouring around individual structure. Scouring aside, how have the reef structures themselves fared overall? And, why has productivity fallen off at many of the subway car reefs? What we'll find out is that the more robust features such as those consisting of obsolete ships and concrete structures have been the most durable, and offer excellent fishing opportunities. But, as revealed by Jerrod's video and reports from other divers, the thin-skinned subway cars haven't fared well. They're much less fishing-friendly than when first deposited and have a short lifespan as fishing reefs.

Diver websites and YouTube videos are great resources for researching bottom structure that attracts sportfish and for assessing the performance of artificial reefs. Underwater photos and videos show the actual physical condition, extent of colonization by marine organisms, and types and species of fish present. Used in conjunction with sonar images as available, a more complete understanding

The December Mystery Fish Rainbow Runner



The rainbow runner (*Elagatis bipinnulata*), also known as the rainbow yellowtail, Spanish jack and Hawaiian salmon, is a common species of pelagic marine fish of the jack family, Carangidae. The species is widespread throughout the tropical and subtropical waters of the world, inhabiting both coastal and offshore areas. The species is the only member of the genus *Elagatis*, which was created 15 years after its initial description, and is closely related to the amberjacks. The rainbow runner is easily distinguished by its body shape, and the brilliant coloration which gives the fish its name.

Rainbow runners are fast-swimming carnivores that take a wide range of prey, including a wide variety of small fishes, cephalopods, and pelagic or planktonic crustaceans, including, shrimp and crabs.

Rainbow runner themselves are important prey items for a number of larger species, with positively identified predators being Fraser's dolphin, and a number of seabirds.

A minor recreational fishery exists for rainbow runner in parts of the world. Often, they are taken while trolling for other species such as tuna and mackerel

of individual reefs emerges. With this in mind we're taking another look at Tower Reef and also the Chesapeake Light Tower off the Chesapeake Bay entrance, this time through the photography and underwater videography of diver Jerrod K. Jenkins, JKJ Diving. (The full videos are posted on YouTube).

Tower Reef, located as it is in the Bay Entrance with depths in the 45' to 65' range, is in a high physical energy zone. Turbulence from storm waves reach all the way down to the bottom. So, it is not surprising that sonar images show scouring around individual structure. Scouring aside, how have the reef structures themselves fared overall? And, why has productivity fallen off at many of the subway car reefs? What we'll find out is that the more robust features such as those consisting of obsolete ships and concrete structures have been the most durable, and offer excellent fishing opportunities. But, as revealed by Jerrod's video and reports from other divers, the thin-skinned subway cars haven't fared well. They're much less fishing-friendly than when first deposited and have a short lifespan as fishing reefs.

An example of a robust structure is the tug J. B. Eskridge which was sunk as a fishing reef in 2002. The upper right images on Chart 1 are a Virginia Marine Resources Commission (VMRC) deployment photo and a side-scan image of the tug from a VMRC 2010 sonar report. Jerrod's 2015 and 2018 underwater videos reveal the tug's condition as a fishing reef. Still photos from the video show the wreck is intact, upright with about a 30-degree list, and heavily encrusted with marine organisms. Check this reef site for sea bass, and tautog, and also for flounder alongside.

The VMRC arranged for deployment of 50 Redbird subway cars at the Tower Reef in 2000. They were pushed off a barge by an excavator. Video taken during the 2018 dive disclosed that these cars have fared poorly in terms of durability. Although the visible remains were heavily encrusted with marine organisms, these light-skinned structures were literally torn apart. The remnants still provide marine habitat, but a small fraction of the original footprint. The remains also pose significant snagging hazards.

As an artificial reef manager some two decades ago, I would have jumped at the chance of getting a load of obsolete subway cars. On face value the cars offered by the New York subway system were excellent candidates for service as fish condos, and some 1300 of them were deposited at reef sites up and down the coast. But their demolished condition and missing metal components are representative of subway cars at other artificial reef sites from North Carolina to New York. Although the projected lifespan for the subway cars as fishing reefs was 25 to 30 years, what's left today ranges from nothing to partial, thin vertical structures and scattered sheet metal.

After about a decade, corrosion of the rivet fasteners holding sheet metal to the ends and frames compromised structural integrity. This made the cars vulnerable to wave-generated energy and hastened their demise. A 10-year life span for an artificial reef isn't very long. A better choice would be more durable structures at suitable locations to optimize the limited resources that are available for artificial reef development. Crushing prior to deployment and placement as stacked reefs in low physical energy locations might also be options for extending the lifespan, but would certainly increase preparation, staging, and deployments costs. The reef form would also be different than one with large voids.

Jerrod and companions dived on the nearby Chesapeake Light Tower in 2015. It's a massive structure that was built in 1965 to replace the Coast Guard lightship formerly marking the Bay entrance. The 120' high tower is supported by four 33" concrete-filled steel pilings that were driven deep into the seabed. The steel legs are tied together by massive crossmembers and corner supports below the surface. During the course of the spring through autumn fishing season the Tower draws large numbers of fish and is particularly well known for being a spadefish hotspot. However, expect to lose some end tackle when fishing close to the structure and bring plenty of spare gear.

The Tower Reef, Light Tower, and wrecks and obstructions around the lower end of the fish haven are a powerhouse combination as a sportfishing destination. However, the subway car remnants are a shell of their former selves. They may produce a few fish, but a better bet is looking for the tug, barge, and other more durable reef materials that were deployed within the fish haven. Expect to find a similar situation at other reef sites developed with the Redbird cars.

- By Wayne Young. As well as being a regular contributor to FishTalk, Wayne Young is the author of multiple books detailing wrecks and fishing reefs in the Chesapeake Bay, Delaware Bay, and beyond. All are available at Amazon.com, and you can find his Facebook page at "[Chesapeake Bay Fishing Reefs.](#)"



Virginia Recreational Saltwater Fishing Regulations

Last Revised
March 2024



Atlantic Croaker

- Minimum Size Limit: No size limit
- Recreational Bag Limit: 50 per person; additional 50 live bait per customer capacity on for-hire or charter vessels



Spot

- Minimum Size Limit: No size limit
- Recreational Bag Limit: 50 per person; additional 50 live bait per customer capacity on for-hire or charter vessels



Kingfish

- Minimum Size Limit: No size limit
- Recreational Bag Limit: No bag limit



Grey Trout (Weakfish)

- Minimum Size Limit: 12 inches
- Recreational Bag Limit: 1 per person



Bluefish

- Minimum Size Limit: No size limit
- Recreational Bag Limit: 3 per person from shore or a rented or private vessel
- 5 per person on for-hire or charter vessels



Spanish Mackerel

- Minimum Size Limit: 14 inches
- Recreational Bag Limit: 15 per person



King Mackerel

- Minimum Size Limit: 27 inches
- Recreational Bag Limit: 3 per person



Cobia

- Minimum Size Limit: 40 inches
- Recreational Bag Limit: 1 per person or 2 per vessel, whichever is more restrictive. Only 1 fish per vessel may be greater than 50 inches total length.
- Season: June 15 - September 15
- Gaffing prohibited



Summer Flounder

- Minimum Size Limit: Jan 1-May 31: 16 inches
Jun 1-Dec 31: 17.5 inches
- Recreational Bag Limit: 4 per person



Striped Bass

Any person fishing striped bass recreationally shall use non-offset, corrodible, non-stainless steel circle hooks when fishing with bait.

Chesapeake Bay Spring Season

- Size Limit: 19-24 inches
- Recreational Bag Limit: 1 fish per person
- Season: May 16 - June 15

Chesapeake Bay Fall Season

- Size limit: 19-24 inches
- Recreational Bag Limit: 1 fish per person
- Season: October 4 - December 31

Coastal Season

- Size Limit: 28-31 inches
- Recreational Bag Limit: 1 per person
- Season: January 1 - March 31, May 16 - December 31

Select species provided for information purposes only. Not all regulated species are included. All regulations are subject to change. It is the angler's responsibility to know and abide by all current regulations and laws. Check for new regulations before you go fishing. www.mrc.virginia.gov



Spadefish

- Minimum Size Limit: No size limit
- Recreational Bag Limit: 4 per person



Sheepshead

- Minimum Size Limit: No size limit
- Recreational Bag Limit: 4 per person



Black Sea Bass

- Minimum Size Limit: 13
- Recreational Bag Limit: 15
- Season: Feb 1-29 (permit required);
May 15-July 15, July 27-Dec 31



Tautog

- Minimum Size Limit: 16 inches
- Recreational Bag Limit: 4 per person
- Season: January 1-May 15, July 1- Dec. 31



Speckled Trout

- Minimum Size Limit: 14 inches
- Recreational Bag Limit: 5 per person, only 1 greater than 24"



Red Drum

- Minimum Size Limit: 18 inches
- Maximum Size Limit: 26 inches
- Recreational Bag Limit: 3 per person



Black Drum

- Minimum Size Limit: 16 inches
- Recreational Bag Limit: 1 per person

PSWSFA SPONSORS

PSWSFA would like to thank these sponsors for supporting our 2024 Sheepshead Tournament

GOLD SPONSOR

Family Owned and Operated
Wallace's BAIT & TACKLE
Foxhill, VA (757) 851-5451

GOLD SPONSOR
MULTIPRINT
INCORPORATED

DESIGN • PRINT
SCREEN PRINT • EMBROIDERY
PROMOTIONAL ITEMS

(757) 244-6800
www.multiprintinc.com
orders@multiprintinc.com

GOLD SPONSOR

TROY
MARINE
757-238-8746

SILVER SPONSOR

ALTIST
WELDING & FABRICATION
(757) 848-7003

BRONZE SPONSORS

Bishop Fishing Supply SHIMANO
1215-T George Washington Memorial Hwy Yorktown, VA 23693
BISHOP
SINCE 1984
FISHING SUPPLY
757-591-9300

LEGASEA
M A R I N E

PACK BROTHERS HOSPITALITY

Dodd RV and Marine
Since 1956

JOSH'S
BAR & GRILL
a great local place for food, fun and friendly faces

Hampton Roads
RV, Auto Body & Fiberglass Repair, LLC
757-915-7808
201c Odd Road Poquoson VA 23662

daddy's
pitmaster bbq

CHANDLER
LANDSCAPE DESIGN, INC.

R. Hayden Smith
FUNERAL HOME

Donated \$150

COASTAL
insurance agency

JKL Designs LLC

G TOWN
BAIT -n- TACKLE
804-684-5599
® LLC

PSWSFA SPONSORS

PSWSFA would like to thank our sponsors for their support



MILLS MARINA



757.898.4411



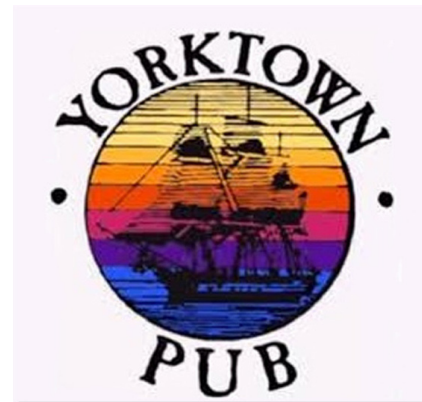
SOUTHERN BAY Yacht Sales

Capt. Michael Hanna, President
mhanna@southernbayyachtsales.com

757-810-7152

<https://www.southernbayyachtsales.com>

FAITH ~ FAMILY ~ BOATS



Andrea's Italian Restaurant & Pizzeria



STERLING MARINE



L&S Bait Company 1415 E Bay Dr, Largo, FL, 33771

Phone (727) 584-7691 www.shopmirrolure.com



FISH TALES



Lenny Rudow from Rudow's FishTalk, is our winner of the Boat Show raffle. Congratulations Lenny - Great Fishing!



Donnie Fricks with Rock Bass in Okinawa



Nice fish but not quite close enough to Virginia

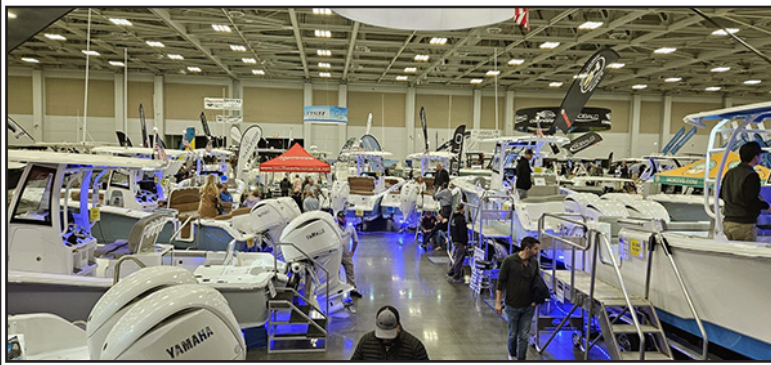


Lenny Rudow and Mike finally met at the boat show



Lenny wasn't at the show Sunday but one of his staff was able to accept his prize for him.

Pictures from the 2025 Boat Show in VA Beach





ANNUAL Fishing Flea Market

MAJOR
SUPPORTERS



March 1, 2025 8:00 am - 2:30 pm

VIRGINIA BEACH FIELD HOUSE

Free Raffles!

50/50

Best Locations Go Fast. Register Now!

Come buy, meet, greet, and eat !!

- New & Used Rod & Reels
- Fresh & Saltwater Gear
- Custom Lures
- A Variety of Boats & Trailers
- Hot Food & Cold Refreshments
- Admission \$5 (children 12 & Under Are Free)
- **FREE PARKING**

Over 3,000 customers in the past year

Virginia Beach Field House
2020 Landstown Centre Wy,
Virginia Beach, VA 23456

**16th
YEAR!**

Butch - tbpocean@aol.com 757-287-0330
George - geva1963@cox.net 757-421-7333
LaVern - rv2mtns@gmail.com 757-974-3090

You are invited to visit or join the best fishing club in Tidewater. Each month the club has a speaker to present an informative program on various local fishing topics. Check us out at www.fishgbfa.org

Or visit [facebook.com/GreatBridgeFishermansAssociation](https://www.facebook.com/GreatBridgeFishermansAssociation)

- Monthly Newsletter • Annual Awards Banquet
- Fishing Tournaments (Boat & Surf) • Special Events such as Oyster Roasts & Picnics
- Philanthropic Events to Benefit Organizations such as Hope House and Wish-A-Fish
- High School Scholarships Presented

Monthly Tournament List December 2024

Bluefin Tuna
Stan Simmerman 96"

Speckled Trout
Stan Simmerman 24.75"

Monthly Tournament Contenders	
Species	Min Size
Albacore Tuna	35"
Amberjack	40"
Bigeye Tuna	40"
Black Drum	40"
Blackbelly Rosefish	14"
Blackfin Tuna	25"
Bluefin Tuna	45"
Bluefish	25"
Blueline Tilefish	20"
Blue Marlin	Release
Channel Bass - Drum	40"
Cobia	40"
Croaker	14"
Dolphin	35"
False Albacore	25"
Flounder	22"
Golden Tilefish	30"
Gray Trout	22"
Grouper	16"
Jack Crevalle	36"
King Mackerel	35"
Pompano	12"
Sailfish	Release
Sea Bass	18"
Shark	60"
Sheepshead	20"
Snapper	17"
Spadefish	18"
Spanish Mackerel	20"
Spearfish	Release
Speckled Trout	21"
Spot	8"
Striped Bass	36"
Swordfish	Release
Tarpon	Release
Tautog	18"
Triggerfish	15"
Wahoo	40"
White Marlin	Release
Whiting (Roundhead)	14"
Yellowfin Tuna	35"

**Fish in Red are updated
as of 1 Jan 2025**

Photo taken Oct 2022 by the Editor at Hapuna Beach, Hawaii

Bring your entries to Milton at our monthly meeting by 7:00 pm or send an email or snail mail to the address' on the left (Yellow Box). Please direct any questions to Milton.

MAIL ENTRY FORMS TO:
MR. MILTON HUDGINS
1894 KATIE LANE
HAYES, VA 23072
(e-mail: judygee03@gmail.com)

Deadline for turning in your 2025 entry forms:

Month of Entry	Deadline (RegMtg)	Month	Deadline (Reg Mtg)
January	18 Feb	July	19 Aug
February	18 Mar	August	17 Sep
March	15 Apr	September	21 Oct
April	20 May	October	18 Nov
May	17 Jun	November	16 Dec
June	15 Jul	December	by Brd Mtg 13 Jan 2026



Three Ways to Turn in your Forms:

- Hand deliver to monthly meetings
- e-mail to judygee03@gmail.com
- Mail to: Milton Hudgins, 1894 Kate Lane, Hayes VA 23072

OFFICIAL ENTRY FORM

Eligible Species

The fish in red were updated 1 Jan 2025

Albacore Tuna	35"	Pompano	12"
Amberjack	40"	Sailfish	Release
Bigeye Tuna	40"	Sea Bass	18"
Blackbelly Rosefish	14"	Shark	60"
Black Drum	40"	Sheepshead	20"
Blackfin Tuna	25	Snapper	17"
Bluefin Tuna	45"	Spadefish	18"
Blueline Tilefish	20"	Spanish Mackerel	20"
Bluefish	25"	Spearfish	Release
Blue Marlin	Release	Speckled Trout	21"
Channel Bass	40"	Spot	8"
Cobia	40"	Striped Bass	36"
Croaker	14"	Swordfish	Release
Dolphin	35"	Tarpon	Release
False Albacore	25"	Tautog	18"
Flounder	22"	Triggerfish	15"
Golden Tilefish	30"	Wahoo	40"
Gray Trout	22"	White Marlin	Release
Grouper	16"	Whiting (Roundhead)	14"
Jack Crevalle	36"	Yellowfin Tuna	35"
King Mackerel	35"		

I hereby certify that the following statements are the truth and the rules of this contest have been complied with. (See next page for the rules).

NOTE: Copies of release citations with this form are acceptable

Required Information

Tournament: _____ **Fish:** _____

Date Caught: _____ **Time Caught:** _____ **AM or PM** **Length:** _____

Name (printed): _____ **Circle One:** **Adult** **Youth**

Signature: _____ **Witness:** _____

Optional Information:

Weight _____ **Where Caught:** _____

Weigh Master's Signature: _____

MEASURING INSTRUCTIONS

With the fish lying on a flat surface, measure in quarter inch increments, from the tip of the mouth to the tip of the tail with the fish in a natural position and the mouth closed. All paid club tournaments will be judged by weight.



FISHING CONTEST RULES

1. Contest will run from January 1 to December 31. Only fish caught for recreational purposes, in accordance with state regulations, are eligible.
2. The territorial limits for this contest shall be from Ocean City, MD to Morehead City, NC. Slight variations north or south of these limits will not disqualify entry.
3. This contest is open only to PSWSFA members and their families whose dues have been paid before the catch. Youth anglers must be age 15 or less on the date of the catch. Youth entries must also meet state minimum requirements.
4. Only fish caught on hook and line, rod and reel are acceptable. No assistance at the rod or line shall be permitted, except holding the leader while the fish is being gaffed or boated.
5. There are no restrictions on tackle with the exception that power reels are not permitted.
6. Awards will be made for fish caught each month (1st through last day) at the next monthly meeting. All entries must be in the hands of the tournament chairman by the beginning of the meeting. A later entry will not be accepted. Only monthly entries are eligible for awards.
7. Acceptability of fish entered in this contest is to be entirely within the discretion of the Tournament Committee or the Board of Directors.
8. In case of a tie, the first fish caught will win.
9. Signature of witness of release must accompany entry or release.
10. November and December entries must be submitted received by January 10.
11. Monthly prize money must be picked up within 3 months after being announced.
12. A person who enters fish into another fishing club is ineligible to enter fish into the PSWSFA monthly tournament.

Angler of the Year Award

The Angler of the Year Award is designed to honor the fisherman who consistently submits qualifying entries. The Tournament Committee will recommend Angler of the Year candidates and the PSWSFA Board will make the final Angler of the Year determination.

Angler of the Year Scoring System

- 2 points will be awarded for each species of fish entered for the monthly contest. The fish must meet the club's minimum length to qualify, including all release entries.
- 2 points will be awarded when an entry is accompanied by a copy of a State Fishing Tournament Citation.
- 2 points will be awarded for any fish that wins the monthly contest in each species.
- 6 points will be awarded for the 1st place annual award winner in each species.
- 4 points will be awarded for the 2nd place annual award winner in each species.
- 2 points will be awarded for the 3rd place annual award winner in each species.
- 5 points will be awarded for the 1st place winner of any PSWSFA tournament.
- 3 points will be awarded for the 2nd place winner of any PSWSFA tournament.
- 1 points will be awarded for the 3rd place winner of any PSWSFA tournament.
- 5 points will be awarded for any fish that becomes a new club or state record.

Anglers are limited to 3 fish per species.

Those fish with the highest point value will be entered in the Angler of the Year point system.

Fish of the Year Award

The Tournament Committee will make Fish of the Year recommendations to the PSWSFA Board of Directors. If in the opinion of the Board of Directors, no fish is deemed worthy of Fish of the Year, no award will be made. Regardless of the method used to determine Fish of the Year, the decision of the PSWSFA Board of Directors will be final.

Critter of the Year Award

Any unusual catch submitted by a club member will be eligible for award when approved by the PSWSFA Board of Directors.



Fishing Around the World



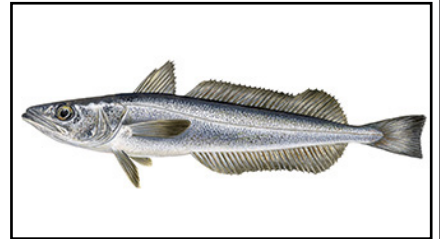
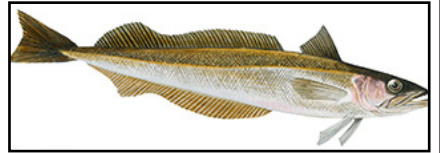
Angling for tropical fish in Japan's southernmost prefecture

The seas surrounding Okinawa—the tropical, southernmost prefecture of Japan—are not just for water sports. The crystal-clear waters make Okinawa an exciting fishing destination. Fishing here can take the form of relaxed shore fishing or angling for bigger game by boat. Potential catches include an array of colorful, tropical fish that thrive only in the warm waters south of the Japanese mainland.



So you think you know your Fish

Name this Fish?





As a member of Peninsula Salt Water Sport Fisherman's Association
a BoatU.S. Cooperating Group, you are invited to become a BoatU.S. Member
at a special rate:

\$15 Boat U.S. Membership Dues and 10% off Water Towing Services

BOAT U.S. COOP GROUP #: Contact Gary Donaldson at GaryD66@Cox.Net
For the PSWSFA Coop group #

NEW MEMBERS

Sign up online at BoatUS.com/Join
(enter your BoatU.S. Coop Group #
on the first page of the application)

CURRENT MEMBERS

Not receiving the discount? Email
Membership@BoatUS.com

MEMBERSHIP BENEFITS INCLUDE:

- 24/7 Dispatch to over 600 towboats in 300+ ports nationwide
- Marine insurance for boaters with 24/7 claims service
- Discounts on fuel, slips, repairs & more at over 1,200 boating businesses nationwide
- Subscription to *BoatU.S. Magazine* – 6 issues per year

Visit BoatUS.com/Membership to learn about all benefits
and services offered to BoatU.S. Members.

MS11 8/11



INSURANCE



DISCOUNTS



MAGAZINE



SAFETY



ADVOCACY



TOWING



TRAILER ASSIST



DISCOUNTS

Directions to PSWSFA Meeting

**Former St Mark's Episcopal Church
Now used by Peninsula Baptist Church**

From 64 (either direction) take the Mercury Blvd exit towards the James River Bridge (West) stay in the right hand lane and turn right at the light onto Todds Lane. Go past Zaxby's chicken about 400 ft and the driveway to the church is on the right. A new Peninsula Baptist Church sign is on the lawn just short of the driveway.

If you come to the traffic light at the intersection of Cunningham you went to far. Turn right on Cunningham and look for the Cunningham entrance to the church (500ft). If you miss it you will need to do a U-turn on Cunningham and go left onto Todds Lane.

The church driveway is just short of the Bercuse Funeral home entrance or just after it if coming from Cunningham.

WHAT'S UP NEXT & BEYOND



Cub Board Meeting 11 February 2025



Club Awards Banquet - 22 Feb 2025



Greatbridge Fishing Flea Market - 1 March 2025



Poquoson Fishing Flea Market - 8 March 2025

PENINSULA SALT WATER SPORTS FISHERMAN'S ASSOC.
P.O. Box 5194
NEWPORT NEWS, VA 23605

**Scan Link with your phone to Pay Dues.
It costs a bit extra though.**



Saint Mark's Driveway coming from Mercury Blvd. Sign still there but with different message, 20 ft further on is entrance to funeral home.

