



The PSWSFA is a family-oriented fishing club established in 1957. Our meetings are held on the 3rd Tuesday of each month (March-Dec.) at 7:00pm. The meetings are free and open to the public and are a great place to swap stories with other local fishermen, find new fishing partners and plan trips together. We have raffles with nice giveaways-donated by local businesses plus prizes we buy ourselves. Each month we have speakers sharing their experience on one of the local fisheries. Come join us and get to know some of the other fishermen in your local area. Directions on last page. You can visit us at www.pswsfa.com.

Next Meeting

20 August 2024 7:00pm (1900)

The Sheepshead Tournament is next month. Let all your non-member friends on facebook etc. know about it so we can have a big turnout. Also, we are still looking for sponsors for the tournament. If you are a business we could really use your help by sponsoring alone or with a boat or two. Go to WWW.PSWSFA.COM for more info. See Page 3 of the Chumline for additional information and payouts,

Once again we are looking for volunteers to work the upcoming Sheepshead tournament on 21 September 2024. If you can help out please contact either Stan Simmerman or myself (Mike). It would be most helpful if you could attend the 17 September meeting to get briefed on times and about the Captains meeting on Friday evening at Wallace's Bait and Tackle

Next month is also the club Spot tournament held in conjunction with the club picnic. It should be at Legasea Marine (Old Dare Marina). See page 15 for a bit more info. Weigh in happens at the picnic on 22 Sept 2024. Exact times will be in the September Chumline.

Stay well,
Mike the Editor

FROM THE PRESIDENT

July fishing was a bit better than June and August fishing should get even better. The biggest problem with July continued to be the significant amount of floating grass in the bay. That seems to be diminishing now and I believe by mid to late August things should be great for trolling and working surface baits. As with last month all our local species are here.

Sheepshead fishing has also improved inside the bay and there have been a lot of citations turned in including a 19.5 pounder. Remember that the 2nd annual PSWSFA Sheepshead Tournament is scheduled for September 21st. The tournament committee has put a lot effort into getting things rolling and we will be looking for members to fish the tournament and volunteers to help with the event. The other important thing is to identify sponsors for the tournament. If you know of any businesses that might be willing to sponsor, please approach them as soon as possible and let Charles Randall, Wally Veal or me know.

Flounder fishing has continued to be picking up and there are some nice flounder around. There have been a couple over 13 lbs. Large schools of big red drum are still around the CBBT and the ocean front. Puppy drum are almost everywhere and

the same is true of speckled trout. The speck bite has been mostly a morning bite or on overcast days if fishing artificial lures. A respectable number of specks and pups have been caught by folks fishing bottom rigs with peelers.

There are some bigger croakers around and the spanish mackerel are throughout the bay and ocean front. The spots are also getting a bit bigger than we've seen in the past couple of years and I've even seen a spot that was almost 12 inches.

There have been a number of tarpon encounters on the eastern shore and also tarpon being seen in the bay and in the Elizabeth River. I know of one big tarpon that was seen by a commercial netter that was on the Hampton Bar.

Remember to turn in your Monthly Tournament Entry Forms to Milton by the beginning of the meeting. It could very well be worth \$10. You cannot win if you don't enter. Especially remember to enter youth entries for the youngsters.

I look forward to seeing you all at the meeting on the 20th. Until then get out there and fish and try to get a youngster/youngsters out with you.

Our guest speakers are Gary Lawson and Wally Veal with way over 50 years of Sheepshead fishing tactics and tricks to pass on to our members.

Tight Lines: Stan

2024 Club Officers

Stan Simmerman
President

Milton Hudgens
Vice President

Wally Veal
Secretary

Christina Grice
Treasurer

Danny Forehand
Past President

Board of Directors

John Hunt Jr.
Ronnie Wilson
Gary Donaldson
Rick Wineman
Charles Randolph
Jenny Williamson
Mike Frielingsdorf
Richie Moore
Paul Downey
Nicole Ambercrombie
Johnny Boyd
Gerald Abrams (alt)



Susanna Musick spoke to us in July about a study VIMS was conducting on the Grey Trigger Fish. Some of our members volunteered to provide fin clipping samples for their study

Attention all members: This is a reminder that all memberships will now expire on the last day of February of each year. Forms are available from Johnny Boyd (membership committee). At the December 2019 board meeting the board voted to increase the dues by \$10. As before, the \$40 is per individual or family. We haven't had a dues increase in pretty much forever and this will help the club pay for the increased cost of our meeting space as well as supporting events like the picnic, awards banquet, and fishing related events, organizations, and tournaments.

PSWSFA 2024 MEMBERSHIP

**Dues: \$40 per year for entire family*
(March through February - not prorated throughout the year)**

Name: _____ Spouse: _____

Dependents Names and ages

- 1) _____ 4) _____
- 2) _____ 5) _____
- 3) _____ 6) _____

*Family must be living with you

Address: _____

City: _____ State: _____ Zip _____ Home Phone _____

E-Mail: _____ Cell Phone: _____

Boat Name/Call Sign: _____

Total number in your membership: _____

Send this form with a check (payable to PSWSFA) to:

PSWSFA
P.O. Box 5194
Newport News, VA 23605

Please check one of the following:

- Yes, please add my name to the club membership book
- No, please do not publish my information

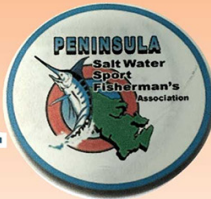
2nd Annual
Sheepshead Tournament



September 21, 2024

Sponsored by:

PSWSFA



For information go to PSWSFA.com

Hosted By:

Wallace's Bait & Tackle

Prizes

1st Place: \$1000

2nd Place: \$600

3rd Place: 400

Optional Calcutta available for \$100

Toad Prize: \$100 for the heaviest
Oyster Toad

Early Bird Discount

Register online or Mail in Form before the end of August to save \$50

2024 Sheepshead Tournament Online Registration

Earlybird Boat Entry - 4 Anglers MAX - \$150

Earlybird Boat Entry - 5 Anglers MAX - \$200

Earlybird Boat Entry - 6 Anglers MAX - \$250

After 31 August 2024 add \$50 to all entries

Click for Online Signup: [PSWSFA Sheepshead Tournament Online Sign Up](#)

Mail-in Forms and Tournament Rules are available at the bottom of the linked page. Make checks payable to PSWSFA

Mastodon Fossils Unearthed During Hampton Roads Bridge-Tunnel Project

By Kendall Osborne / August 6, 2024

It is a very lucky find. The fact that the giant boring machine at the Hampton Roads Bridge-Tunnel (HRBT) Expansion Project uncovered some mastodon bones is itself incredible. Even more astonishing is that an observer noticed the bones. The observer only had seconds to discover the bones as they zipped by in a slurry of shells and muck.

Mastodons were elephant-like creatures about the size of today's Asian elephants. They had smaller ears, a heavier-set body, and large tusks. Opinions differ as to whether they had fur, like mammoths, or bare skin. They ate vegetation, and had unique teeth that facilitated chomping up greens. Their teeth had what is called zygodont morphology, in which the cusps of the teeth are merged into ridges.

Mastodons vanished from North America about 11,500 years ago. The Smithsonian says they went extinct due to climate change and human hunting.

The HRBT Expansion Project, which is adding twin tunnels at the HRBT, produces tons of slurry as the tunnel boring machine churns through the bottom. The slurry is pumped back to the treatment plant where, once spoils are separated from the mixture, they are placed on a conveyor to load onto either barges or trucks to haul off the material to permitted disposal sites.

Observers watch the slurry pass by, looking for items that could have damaged the boring machine, such as metal. They process 16,000 gallons of slurry per minute, which is the same as a dump truck load every 10 seconds! It took a quick and keen eye at the treatment plant to notice the mastodon tooth in the moving muck. Ryan Banas, HRBT expansion project director, noted that the observers are trained to identify hazards to the boring machine, not artifacts. "It's the tooth that is so noticeable," said Banas. "There may have been more of the skeleton that we missed."



These fossils were spotted in the debris from the Hampton Roads Bridge-Tunnel's boring machine. Photo courtesy of HRBT Expansion Project.



The "slurry" of Bay bottom that the tunnel bores through during the bridge-tunnel construction is then taken to a treatment plant.

Banas noted that the boring takes place up to 173 feet beneath the surface of Hampton Roads. The tunnels are not just underwater, they are under the bottom of the harbor.

"Tunnels want to float," said Banas. Because of that, and to avoid bottom debris that might damage the boring machine, the tunnels are placed well beneath the harbor bottom, in what is a mixture of shell and clay. That is where the bones were preserved.

Banas has discussed the find with Dr. Adam Pritchard at the Virginia Museum of Natural History

Continued on page 5

as well as experts at William and Mary and with the Virginia Department of Historic Resources. The consensus, said Banas is, "There was likely a freshwater river beneath what is now the water surface. The mastodon may have become stuck in a mud pit." It then perished and became fossilized. The water level was much lower 11,000 years ago, and the climate was cooler.

The bones will be displayed at a new visitor center scheduled to open in September of this year. The visitor center, located on 4th View Street, will display other artifacts found during the project. These include nine cannonballs, a WWII helmet liner, the keel of a ship, and some granite destined for Fort Monroe dated to 1819. You can learn more about the HRBT expansion, the largest highway construction project in Virginia's history, [here](#).



This Smithsonian image shows the unique shape of mastodon teeth



Way South Chesapeake Bay Fishing Report, August 15 Update:

We are moving into one of the most exciting times of year for fishing in the Bay. All of our migratory species are here, and new bites are starting to develop with steady action being reported all over. Reader reports indicate solid action on slot redfish in the Virginia Beach bays, including limit catches on paddletail jigs and popping cork rigs. Both Lynnhaven and Rudee were mentioned, as was Linkhorn. Fishing docks and weedbeds was working well and some speckled trout up to 21" were also in one report. You can expect a wide variety of species while fishing on the southern Bay this time of year. Another reader fishing on the lower Virginia Eastern Shore reported an excellent redfish bite in the shallows. The low tides this week had the fish pushed up chasing bait in less than two feet of water which put sight casting on the table. One afternoon produced over a dozen slot reds all caught on small white swimbaits. Late summer and fall are excellent times of year to fish for reds in the shallows of the Chesapeake Bay tributaries as they will be feeding aggressively to bulk up before the colder months. There is a lot of water to search for the reds, but the number one thing to look for is bait.



Amy caught this beautiful red while visiting Virginia Beach.

Virginia Beach Sport Fishing let us know that the king mackerel bite is picking up along the oceanfront with several nice ones landed this week. They recommend using live menhaden fished on a king rig. Cutlassfish are another excellent bait for king mackerel and there is an abundance of them around the inshore waters of the Lower Bay. Number four Drone spoons fished deep along with several other swimming lures can also be effective. VBSF also mentioned that Spanish mackerel fishing has been great at times for anglers trolling Clark or Drone spoons along the beaches. It's good to troll lures at different depths, so using planers, inline sinkers, and bird teasers will make sure to cover the entire water column.

Around the CBBT and nearby shoals, cobia fishing remains the main attraction for many anglers. Sight casting with live eels or bucktails dressed with large soft plastics have tempted the brown bruisers into the net. On windy or cloudy days, chumming or live lining can work, but be prepared for pesky sharks and rays to be quick to bite your line. They will put up a hard fight, so if the tug is your drug, they will put a smile on your face.

Thousands of Snakeheads & Other Invasives Intercepted by Conowingo Dam Fish Lift

By Meg Walburn Viviano / July 30, 2024

Nearly 3,000 fish that don't belong in Chesapeake Bay waters have been intercepted and turned into dinner, thanks to a team at the Conowingo Dam on the Susquehanna River.

Conowingo Dam owner Constellation Energy operates a fish lift each spring that is designed to help migrating fish, like American shad, make it past the dam and to their spawning habitat upstream. Described as “a water-filled elevator”, the lift collects anadromous fish species during their spawning run and transports them to their traditional spawning areas in the upper Susquehanna.

The only problem? Sometimes fish make it into the lift that don't belong there—invasive species like northern snakehead (**newly re-named** Chesapeake channa, to make it sound more palatable), along with blue catfish and flathead catfish. That's when technicians remove the invasive fish one by one and harvest them to help feed the hungry.



The fish lift seen high above the Susquehanna River.
Photo: Support Conowingo Dam/Facebook

In the 2024 season, running from March to June, they pulled more than 18,000 pounds of invasive fish from the fish lift—keeping nearly 3,000 individual fish out of the Bay watershed. The vast majority were Chesapeake channa, with 2,106 of them removed.

The Maryland Department of Natural Resources (DNR) says the number of Chesapeake channa sharply increased this year, with more than double the amount from any other year in the four seasons the program has operated.

It's a sign of invasive species' ability to multiply, a trend that has been seen further down the Bay with all three species: channa, blue catfish and flathead catfish.

Once technicians pulled the invasive fish from the lift, the fish were taken to Maryland seafood wholesaler J.J. McDonnell to be processed for eating. Some were distributed to food banks in Cecil County, where the Conowingo Dam is located. DNR kept some fish for research.

The team approach between Constellation Energy, DNR, J.J. McDonnell and environmental consulting firm Normandeau Associates Inc., shows how business and environmental interests can work together for a greater good.

“The removal effort at Conowingo Dam is a prime example of how partnership can amplify our ability to manage invasive fishes and limit their spread,” says Branson Williams, DNR's Invasive Fishes Program Manager.

While we don't have our own fish lifts to intercept predatory invasive fish who feed on native aquatic species, we can do our part to get more invasives out of the Bay. Anglers are encouraged to harvest Chesapeake channa, blue and flat head catfish and kill them. DNR asks everyone to report their catches using the [Invasive Species Tracker](#) form on the DNR website.

Experts encouraged by continued expansion of Chesapeake Bay grasses

By John Wallace

Underwater grasses in the Chesapeake Bay expanded 7% to an estimated 82,937 acres in 2023 to reach their seventh-highest level in 40 years of monitoring, according to an annual survey led by researchers at William & Mary's Virginia Institute of Marine Science (VIMS) in collaboration with the Maryland Department of Natural Resources.

Submerged aquatic vegetation (SAV) provides critical habitat for many of the Bay's most coveted species. And because they require clear water to obtain sunlight, SAV serves as an important bellwether for the overall health of the Chesapeake Bay.

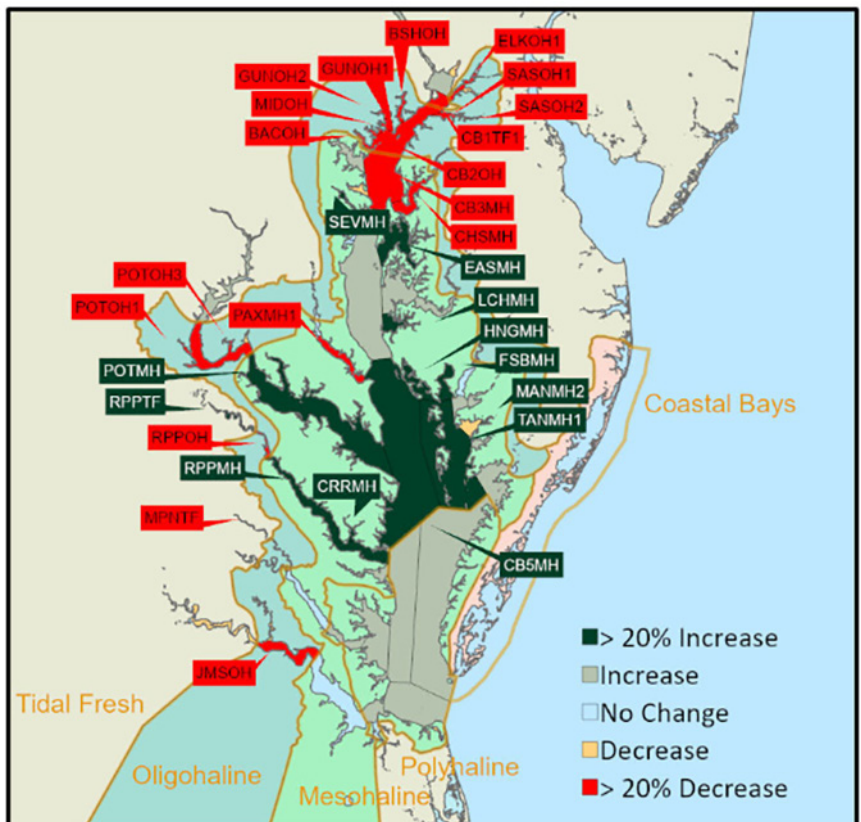
"Overall, the 2023 numbers are encouraging and nearly back to levels observed before the dramatic declines we experienced in 2019," said Associate Professor Christopher Patrick, who directs the SAV Monitoring and Restoration Program at VIMS and is a member of the Chesapeake Bay Program's SAV Workgroup. "While we had some localized declines, we had impressive gains in areas of great ecological importance. We also observed grass beds in depths up to nine feet at low tide in some areas, which was surprising to many and an indicator of good water clarity."

Researchers divide the bay into four regions based on the salinity of the water:

- Tidal fresh: This region of the bay is comprised of freshwater still influenced by tides. Here grass beds increased 3% to 19,804 acres.
- Oligohaline: This slightly salty region saw a 54% decrease, bringing the total acreage to 3,429 in 2023 compared to 7,145 in 2022.
- Mesohaline: This moderately salty zone is the largest of the four regions. It saw a substantial increase of 21% to 37,961 acres.
- Polyhaline: This very salty region showed an increase of 12% to 21,743 acres

The losses in the oligohaline region were mostly localized to the Middle River and Gunpowder River, which also saw declines in 2022. Last year, researchers noted an increase in turbidity in this area, suggesting the cause may be affiliated with events happening within the rivers' watersheds.

"While we're trying to pinpoint the reasons for the declines in the oligohaline area, it's important to note that this is a relatively small region. This means that declines in this area significantly impact the regional



This map shows SAV coverage changes from 2022 across salinity zones.

Continued on page 8

numbers, but it does not have a huge impact on the total counts for the Bay,” said Patrick.

Of note, the polyhaline region showed the largest amount of SAV since 1997, growing at depths in some places not seen in decades. This is encouraging, as the region provides important habitat for many species and is predominately occupied by eelgrass (*Zostera marina*), which has been overtaken by widgeon grass (*Ruppia maritima*) as the dominant grass species in the Bay. There are 17 different species of SAV in the Chesapeake Bay.

Conducting the survey

VIMS has tracked the abundance of underwater grasses as an indicator of Bay health since 1978, with the annual survey launched in 1983. The efforts were started by former Professor Robert J. Orth, conducted using aerial photographs taken from planes following specific flight patterns. In recent years, satellite imagery has been used to supplement aerial photographs when weather or other factors prohibit flights or adequate photos.

“The survey is a tremendous undertaking and requires ideal conditions of low winds, low tide and clear skies in order to properly photograph the grass beds,” said Patrick. Ground surveys help supplement and confirm the presence of grass beds found in aerial surveys. More information on the survey methods is available on the [VIMS website](#).

The survey allows the Chesapeake Bay Program to assess progress toward restoration goals outlined in the Chesapeake Bay Watershed Agreement, which set a target of restoring 130,000 acres by 2025. The 2023 numbers represent a 61% achievement of that goal and a 45% attainment of the ultimate goal of 185,000 acres of restored grasses. At its most pristine condition, it’s believed the Chesapeake Bay could have supported up to 600,000 acres of SAV.

Managing water quality key to future success

Underwater grasses are very sensitive to environmental conditions. Historically, the Chesapeake Bay was dominated by eelgrass. However, decades of water quality and habitat degradation combined with the effects of Tropical Storm Agnes in 1972 led to widespread declines. Eelgrass recovery in subsequent decades was halted by increasing summer temperatures and more frequent marine heatwaves.

A [VIMS-led study](#) published in Proceedings of the National Academy of Science in May 2023 documented the rise of widgeon grass in areas once dominated by eelgrass. Widgeon grass is more heat tolerant than eelgrass and its seeds are longer lasting. However, widgeon grass is very sensitive to increased nutrient levels, which can lead to drastic fluctuations in coverage. Widespread declines documented in 2019 were attributed to increased run-off entering the Bay following a very wet spring season.

“The losses observed in 2019 wiped out nearly a decade of progress, but we have rebounded well in the last three years,” said Patrick. “We are also seeing very encouraging expansion of eelgrass in the lower portion of the Bay, with the highest numbers ever recorded in Mobjack Bay.”

Patrick and other experts attribute the expansion of eelgrass in the saltier regions of the lower Bay to relatively warm winters and fewer documented marine heatwaves, possibly in relation to the La Niña climate cycle. However, with summer temperatures trending ever higher, VIMS [experts predict](#) that eelgrass may struggle in the future.

“Nutrient reductions throughout the Chesapeake Bay’s watershed have played a critical role in SAV recovery,” said Patrick. “With the rise of widgeon grass as the dominant species, we must continue to focus on ways to maintain and improve water quality if we hope to continue progress on SAV restoration and combat the effects of human population growth and climate change.”

More information about the SAV Monitoring and Restoration Program can be found on the [VIMS website](#).

Virginia Saltwater Fishing Report

Fishing enthusiasts are in for a treat as the Virginia Flounder season hits its peak, with large fish over 24 inches being frequently caught. For those looking to capitalize on this season, the Chesapeake Bay Bridge-Tunnel (CBBT) is a prime location. The best bait for Virginia Flounder includes finger mullet, which is a significant part of their diet along the East Coast. Anglers should consider using a Carolina rig to keep the bait low to the ground, mimicking the natural prey of the Flounder. Bring along extras, unfortunately if you're not hanging up you might not be in a good spot.

Sheepshead and tautog are also biting at the CBBT, and the recommended baits include blue crab, clams, fiddler crabs, mussels, bar10.5

The lower bay and ocean front, continue to be promising spots for anglers aiming to catch cobia and red drum. These locations offer access to both species, often found in the same waters, allowing for an exciting fishing experience. With cobia known for their reel-burning runs and red drum for their muscle-testing power.



VBSF contributor, Dr Neill went looking for a king. He didn't find one, but found some other toothy critters. Had all 4 rods go down, bluefish jumping all behind the boat, fun stuff.

The Virginia Beach Fishing Pier has reported catches of roundhead, blues at the end of the pier, and flounder in the surf zone. Surf anglers in this area can expect to catch drum, sea mullet, bluefish, and maybe a pompano or sharks. The best bait for surf fishing in Virginia Beach depends on the species targeted, but popular options include live bait such as menhaden, spot, and eels, as well as cut bait, squid, shrimp, and sand fleas.

Speckled Trout anglers typically do well in mid-summer, but the recent heavy rains have slowed the bite down. As we enter August and September, the bite is expected to pick up. The best baits for catching speckled trout include peeler crabs, soft-shelled crabs, fresh shrimp, bloodworms, and cut fish.

Lastly, Tarpon have made an appearance on the Eastern Shore in the barrier islands' backwaters. Fresh bait is key for Tarpon fishing, with cut spot, croaker, mullet, or menhaden catching the lion's share of Tarpon. Live bait also works well, and anglers can often catch some right at the Tarpon hole with a two-hook bottom rig baited with bloodworm.

The July Mystery Fish John Dory



John Dory, St Pierre, or Peter's fish, refers to fish of the genus Zeus, especially Zeus faber, of widespread distribution. It is an edible demersal coastal marine fish with a laterally compressed olive-yellow body which has a large dark spot, and long spines on the dorsal fin. Its large eyes at the front of the head provide it with binocular vision and depth perception, which are important for predators. The John Dory's eye spot on the side of its body also confuses prey, which are scooped up in its big mouth.

The John Dory catches prey by stalking it, then extending its jaw forward in a tube-like structure to suck the fish in with some water. The water then flows out through the gills; the pre-maxillary bone, the only tooth-bearing bone in this fish, is used to grind the food.

John Dory are benthopelagic coastal fish, found on the coasts of Africa, South East Asia, New Zealand, Australia, the coasts of Japan, and on the coasts of Europe. They live near the seabed, living in depths from 5 to 360 metres (16 to 1,200 ft). They are normally solitary. John Dory are more commonly found in the waters of the North Island of New Zealand, than the colder waters surrounding the South Island



Virginia Recreational Saltwater Fishing Regulations

*Last Revised
March 2024*



Atlantic Croaker

- Minimum Size Limit: No size limit
- Recreational Bag Limit: 50 per person; additional 50 live bait per customer capacity on for-hire or charter vessels



Spot

- Minimum Size Limit: No size limit
- Recreational Bag Limit: 50 per person; additional 50 live bait per customer capacity on for-hire or charter vessels



Kingfish

- Minimum Size Limit: No size limit
- Recreational Bag Limit: No bag limit



Grey Trout (Weakfish)

- Minimum Size Limit: 12 inches
- Recreational Bag Limit: 1 per person



Bluefish

- Minimum Size Limit: No size limit
- Recreational Bag Limit: 3 per person from shore or a rented or private vessel
- 5 per person on for-hire or charter vessels



Spanish Mackerel

- Minimum Size Limit: 14 inches
- Recreational Bag Limit: 15 per person



King Mackerel

- Minimum Size Limit: 27 inches
- Recreational Bag Limit: 3 per person



Cobia

- Minimum Size Limit: 40 inches
- Recreational Bag Limit: 1 per person or 2 per vessel, whichever is more restrictive. Only 1 fish per vessel may be greater than 50 inches total length.
- Season: June 15 - September 15
- Gaffing prohibited



Summer Flounder

- Minimum Size Limit: Jan 1-May 31: 16 inches
- Jun 1-Dec 31: 17.5 inches
- Recreational Bag Limit: 4 per person



Striped Bass

Any person fishing striped bass recreationally shall use non-offset, corrodible, non-stainless steel circle hooks when fishing with bait.

Chesapeake Bay Spring Season

- Size Limit: 19-24 inches
- Recreational Bag Limit: 1 fish per person
- Season: May 16 - June 15

Chesapeake Bay Fall Season

- Size limit: 19-24 inches
- Recreational Bag Limit: 1 fish per person
- Season: October 4 - December 31

Coastal Season

- Size Limit: 28-31 inches
- Recreational Bag Limit: 1 per person
- Season: January 1 - March 31, May 16 - December 31

Select species provided for information purposes only. Not all regulated species are included. All regulations are subject to change. It is the angler's responsibility to know and abide by all current regulations and laws. Check for new regulations before you go fishing. www.mrc.virginia.gov



Spadefish

- Minimum Size Limit: No size limit
- Recreational Bag Limit: 4 per person



Sheepshead

- Minimum Size Limit: No size limit
- Recreational Bag Limit: 4 per person



Black Sea Bass

- Minimum Size Limit: 13
- Recreational Bag Limit: 15
- Season: Feb 1-29 (permit required); May 15-July 15, July 27-Dec 31



Tautog

- Minimum Size Limit: 16 inches
- Recreational Bag Limit: 4 per person
- Season: January 1-May 15, July 1- Dec. 31



Speckled Trout

- Minimum Size Limit: 14 inches
- Recreational Bag Limit: 5 per person, only 1 greater than 24"



Red Drum

- Minimum Size Limit: 18 inches
- Maximum Size Limit: 26 inches
- Recreational Bag Limit: 3 per person



Black Drum

- Minimum Size Limit: 16 inches
- Recreational Bag Limit: 1 per person

PSWSFA SPONSORS

PSWSFA would like to thank our sponsors for their support



L&S Bait Company 1415 E Bay Dr, Largo, FL, 33771

Phone (727) 584-7691 www.shopmirrolure.com



Capt. Michael Hanna, President
mhanna@southernbayyachtsales.com

757-810-7152

<https://www.southernbayyachtsales.com>

FAITH ~ FAMILY ~ BOATS

MILLS MARINA



757.898.4411



PSWSFA SPONSORS

PSWSFA would like to thank our sponsors for their support



MULTIPRINT
INCORPORATED

DESIGN • PRINT
SCREEN PRINT • EMBROIDERY
PROMOTIONAL ITEMS

(757) 244-6800
www.multiprintinc.com
orders@multiprintinc.com



Andrea's
Italian Restaurant & Pizzeria



We'd like to thank Legasea Marine for being the first sponsor for our 2024 Sheepshead Tournament



FISH TALES



Gary Lawson and 58" Cobia



Cyler Brooks and 52" Cobia



Irv Dave Jack Bob A Tom Powers
November 8, 2002 25 Rockfish

22 Years ago



Cyler and Carson Brooks with 41.5" cobia



Stan showing us the ins and outs of deep dropping for spot...



Gary and Wally with Sheephead

Monthly Tournament List June 2024

Speckled Trout	Donnie Fricks	28.25"
Spadefish	Donnie Fricks	22"
Bluefish	Paul Downey	30"
Cobia	Paul Downey	60"
Channel Bass (Red)	Sean Downey (Y)	28"
Trigger Fish	Chris Harris	16"
Yellow Fin Tuna	Paul Hunt	43.5"
Sheepshead	Rick Wineman	26"
Tautog	Rick Wineman	18"

Monthly Tournament Contenders	
Species	Min Size
Albacore Tuna	35"
Amberjack	40"
Bigeye Tuna	40"
Black Drum	40"
Blackbelly Rosefish	14"
Blackfin Tuna	45"
Bluefin Tuna	45"
Bluefish	25"
Blueline Tilefish	20"
Blue Marlin	Release
Channel Bass - Drum	40"
Cobia	40"
Croaker	16"
Dolphin	35"
False Albacore	25"
Flounder	22"
Golden Tilefish	30"
Gray Trout	24"
Grouper	16"
Jack Crevalle	36"
King Mackerel	35"
Pompano	12"
Sailfish	Release
Sea Bass	15"
Shark	60"
Sheepshead	15"
Snapper	12"
Spadefish	18"
Spanish Mackerel	20"
Spearfish	Release
Speckled Trout	21"
Spot	8"
Striped Bass	36"
Swordfish	Release
Tarpon	Release
Tautog	18"
Triggerfish	15"
Wahoo	40"
White Marlin	Release
Whiting (Roundhead)	14"
Yellowfin Tuna	35"

Photo taken Oct 2022 by the Editor at Hapuna Beach, Hawaii

Bring your entries to Milton at our monthly meeting by 7:00 pm or send an email or snail mail to the address' on the left (Yellow Box). Please direct any questions to Milton.

MAIL ENTRY FORMS TO:
MR. MILTON HUDGINS
1894 KATIE LANE
HAYES, VA 23072
(e-mail: judygee03@gmail.com)

Deadline for turning in your 2024 entry forms:			
Month of Entry	Deadline (RegMtg)	Month	Deadline (Reg Mtg)
January	13 Feb	July	20 Aug
February	19 Mar	August	17 Sep
March	16 Apr	September	17 Oct
April	21 May	October	19 Nov
May	18 Jun	November	17 Dec
June	16 Jul	December	by Brd Mtg 14 Jan 2025



- Three ways to turn in your forms:**
- hand deliver to monthly meetings
 - e-mail to judygee03@gmail.com
 - mail to: Milton Hudgins, 1894 Katie Lane, Hayes, VA 23072

OFFICIAL ENTRY FORM

ELIGIBLE SPECIES

Albacore Tuna	35 in.	Pompano	12 in.
Amberjack	40 in.	Sailfish	Release
Bigeye Tuna	40 in.	Sea Bass	15 in.
Blackbelly Rosefish	14 in.	Shark	60 in.
Black Drum	40 in.	Sheepshead	15 in.
Blackfin Tuna	20 in.	Snapper	12 in.
Bluefin Tuna	45 in.	Spadefish	18 in.
Blueline Tilefish	20 in.	Spanish Mackerel	20 in.
Bluefish	25 in.	Spearfish	Release
Blue Marlin	Release	Speckled Trout	21 in.
Channel Bass	40 in.	Spot	8 in.
Cobia	40 in.	Striped Bass	36 in.
Croaker	16 in.	Swordfish	Release
Dolphin	35 in.	Tarpon	Release
False Albacore	25 in.	Tautog	18 in.
Flounder	22 in.	Triggerfish	15 inches
Golden Tilefish	30 in.	Wahoo	40 in.
Gray Trout	24 in.	White Marlin	Release
Grouper	16 in.	Whiting (Roundhead)	14 in.
Jack Crevalle	36 in.	Yellowfin Tuna	35 in.
King Mackerel	35 in.		

I HEREBY CERTIFY THAT THE FOLLOWING STATEMENTS ARE THE TRUTH, AND THE RULES OF THIS CONTEST HAVE BEEN COMPLIED WITH (see back of this sheet).

NOTE: Copies of release citations with this form are acceptable.

Required Information:

Tournament: _____ Fish: _____

Date Caught: _____ Time Caught: _____ ^{circle one} am / pm Length: _____

Name (printed): _____ ^{check one:} Adult Youth

Signature: _____ Witness Signature: _____

Optional Information:

Weight: _____ Where Caught: _____

Weight Master Signature: _____



2024 PSWSFA TOURNAMENTS

Download "Official Entry Form" at

[Monthly Tournament - Peninsula Salt Water Sport Fisherman's Association \(pswsfa.com\)](http://pswsfa.com)



FOR ALL TOURNAMENTS

You must register prior to fishing and use the PSWSFA official monthly entry form

Questions Contact: Tournament Director Rick Wineman: rick@getanetsportfishing.com or 757-268-1539

Bishop's Trophy Red Drum Tournament

April 1st – May 31st, 2024

Must Receive Completed Form no later than the Board Mtg. June 11, 2024
See Rules below for Catch and Release fish totals. (Witness or photo)

Club Multiple Species Tournament

June 1st – 30th, 2024

Angler who catches the most saltwater species in a single day
Must Receive Completed Forms no later than the
Board Mtg. July 9, 2024

Youth and Ladies Croaker/Spanish Mackerel Tournament

July 1st -31st, 2024

Free Tournament for Lady and Youth members/Guests
(Do not need to register to participate)
Must Receive Completed Entry Forms no later than the
Board Mtg. August 13, 2024

Don Forman Club Cobia Tournament

sponsored by Bishop Fishing Supply
August 1st -31st, 2024

Must Receive Completed Form no later than the Board Mtg.
Sept. 10, 2024. See Rules below for weight tournament

Sheepshead Tournament 21 September 2024

This is a Separate Paid Entry Event.
Details and rules to be announced.
Rules and fees listed below
do not apply to this tournament.

XX

Club Spot Tournament

September 21st – 22nd, 2024

Weigh in: 2:00pm Sept. 22nd at (Location to be determined)
All entries will be weighed using the same club scale
followed by the Annual Club Picnic
Spot Tournament - Two categories with 1st – 3rd place winners:
"ADULT ENTRIES" and "YOUTH ENTRIES"
(Anglers for the Spot Tournament must be present to win)
RSVP by Sept. 20th if you are coming to the Annual Club Picnic to the
Tournament Director

Club Puppy Drum Tournament

October 1st – 31st, 2024

Most number of Spots Wins (photos required)
Must Receive Completed Forms and copies of photos no later than the
Board Mtg. Nov 12, 2024

Wilcox Bait and Tackle Irv Fenton Rockfish Tournament

December 1st -31st, 2024

Must Receive Completed Form no later than Jan. 14, 2024
See Rules below for weight tournament

MAIL ENTRY FORMS TO: MR. MILTON HUDGINS, 1894 KATIE LANE, HAYES, VA 23072
(e-mail: judygee03@gmail.com)

2024 PSWSFA Tournaments Rules

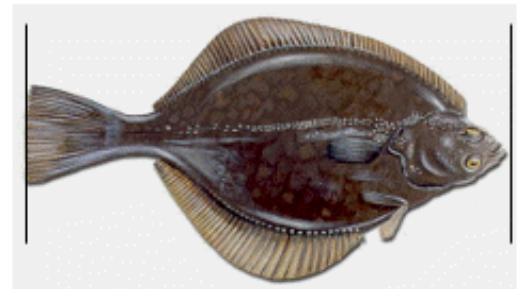
ALL Club Tournaments (Except as noted on front):

- Entry Fees: \$20 for member & \$30 for non-member. Youth and Ladies croaker/Spanish mackerel tourney is free.
- Rules and Entry Fees listed below do not apply to the Sheepshead Tournament. This is a sperate paid entry tournament.
- You must register before fishing by e-mailing Rick Wineman: rick@getanetsportfishing.com or call 757-268-1539.
- Leaving a message will be sufficient to register, give all anglers names (specify club members and club guest), and also give a phone number.
- Guest(s) must fish with at least one member on boat/shore/pier/kayak
- Use a club "Official Entry Form" and weigh in fish at any Va. Saltwater Tournament official weigh station for weight tournaments. Record the weight of fish, date and time caught and have the weigh master sign the form to verify catch. If two identical fish are caught on the same day, the earlier fish wins. That is why time is so important. Length tournament entries require witness or photo.
- All pertinent PSWSFA bylaws apply.

To register or ask questions, e-mail Rick Wineman, Tournament Director at rick@getanetsportfishing.com or call Rick @ 757-268-1539

MEASURING INSTRUCTIONS

With the fish lying on a flat surface, measure in quarter inch increments, from the tip of the mouth to the tip of the tail with the fish in a natural position and the mouth closed.



WWW.PSWSFA.COM

Fishing Around the World

If you're searching for a dreamlike travel destination and world-class fishing, you're going to love Seychelles. It has something for everyone, whether you'd like to stalk the flats, explore the reefs, or hunt offshore. Just hop aboard one of the many Seychelles fishing charters and it'll all be in the palm of your hand.

You don't have to venture far to catch fish in Seychelles. The action starts right along the pristine flats surrounding the islands that make up the archipelago. Close to shore, you'll get to fish for different kinds of Trevally, including Giant Trevally, as well as Bonefish, Milkfish, Bohar Snapper, and more.

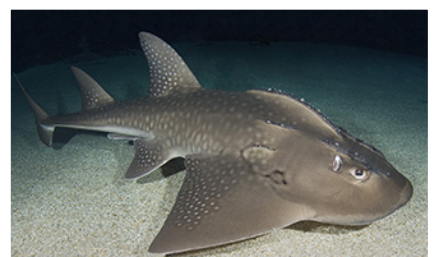
As you move further from shore, you'll discover an even greater variety of species. Colorful Triggerfish, Parrotfish, huge Grouper, Barracuda, and Wrasse are just a few of the many fish you'll find prowling the reefs and coral beds. Sometimes, you'll also see the likes of Mahi Mahi, Bonito, and even Yellowfin Tuna show up.

Of course, this part of the Indian Ocean is also a fantastic place to catch some pelagics. As you leave the Mascarene Plateau and hit the deeper waters, you'll get your shot at Sailfish, Blue and Black Marlin, Wahoo, massive GT, and numerous other game fish.

Most of the fishing charters are concentrated on islands such as Mahé, Praslin, and La Digue. With proper planning, you can also fish the Outer Islands such as Alphonse, St. François, or Cosmoledo. The main season runs between October and May, as southeast winds can make the period between May and September not as favorable for fishing.



So you think you know
your Fish
What is this?





As a member of Peninsula Salt Water Sport Fisherman's Association
a BoatU.S. Cooperating Group, you are invited to become a BoatU.S. Member
at a special rate:

\$15 Boat U.S. Membership Dues and 10% off Water Towing Services

BOAT U.S. COOP GROUP #: Contact Gary Donaldson at GaryD66@Cox.Net
For the PSWSFA Coop group #

NEW MEMBERS

Sign up online at BoatUS.com/Join
(enter your BoatU.S. Coop Group #
on the first page of the application)

CURRENT MEMBERS

Not receiving the discount? Email
Membership@BoatUS.com

MEMBERSHIP BENEFITS INCLUDE:

- 24/7 Dispatch to over 600 towboats in 300+ ports nationwide
- Marine insurance for boaters with 24/7 claims service
- Discounts on fuel, slips, repairs & more at over 1,200 boating businesses nationwide
- Subscription to *BoatU.S. Magazine* – 6 issues per year

Visit BoatUS.com/Membership to learn about all benefits
and services offered to BoatU.S. Members.

MS11 8/11



INSURANCE



DISCOUNTS



MAGAZINE



SAFETY



ADVOCACY



TOWING



TRAILER ASSIST



DISCOUNTS

Directions to PSWSFA Meeting

**Former St Mark's Episcopal Church
Now used by Peninsula Baptist Church**

From 64 (either direction) take the Mercury Blvd exit towards the James River Bridge (West) stay in the right hand lane and turn right at the light onto Todds Lane. Go past Zaxby's chicken about 400 ft and the driveway to the church is on the right. The original St, Mark's sign is still on the lawn just short of the driveway with a new Baptist church message.

If you come to the traffic light at the intersection of Cunningham you went to far. Turn right on Cunningham and look for the Cunningham entrance to the church (500ft). If you miss it you will need to do a U-turn on Cunningham and go left onto Todds Lane.

The church driveway is just short of the Bercuese Funeral home entrance or just after it if coming from Cunningham.

WHAT'S UP NEXT & BEYOND



20 August 2024 - Member Meeting



17 September - Member Meeting



21 September - Sheepshead Tournament

PENINSULA SALT WATER SPORTS FISHERMAN'S ASSOC.
P.O. Box 5194
NEWPORT NEWS, VA 23605

**Scan Link with your
phone to Pay Dues.
It costs a bit extra though.**

