



The PSWSFA is a family-oriented fishing club established in 1957. Our meetings are held on the 3rd Tuesday of each month (March-Dec.) at 7:00pm. The meetings are free and open to the public and are a great place to swap stories with other local fishermen, find new fishing partners and plan trips together. We have raffles with nice giveaways-donated by local businesses plus prizes we buy ourselves. Each month we have speakers sharing their experience on one of the local fisheries. Come join us and get to know some of the other fishermen in your local area. Directions on last page. You can visit us at www.pswsfa.com.

Next Meeting

19 March 2024 7:00pm (1900)
see last page for directions

IMPORTANT AWARDS BANQUET NEWS

We only have about 35 folks going as of 14 February so we need your support for this important club function.

If you waited to the last minute to get a seat you will need to **do it via the link below**. Christina Grice will be out of town for work until the 24th.

You can sign up online right up to the end, but we wish you would do it sooner so we can plan better and get an accurate head count. We can only take 75 folks. **24 Feb 2024 6-10PM**

Use this link for banquet payments:

<https://pswsfa-annual-club-banquet.cheddarup.com>

The winner of the custom rod and reel, we raffled at the boat show was Mr. Dave Tuck, who is away on business until about 19 February. We hope to have him at the March meeting to receive his prize. We took in right around \$1770 minus the cost of the rod and reel. Much better than last year.

The great Bridge fishing flea market is coming up on 2 March, see pg 21. New location in VA Beach

Stay well
Mike the Editor

FROM THE PRESIDENT

Folks,

February is shooting on by. Hard to believe it is already the middle of the month. The PSWSFA Board has been busy even though we haven't had any club meetings.

Over the last couple of months, we prepared for and represented the club at the Virginia Beach Boat Show. A very well deserved thank you to Paul Downey who set up an electronic payment system for us. He spent a great number of hours getting that done. Mike Frielingsdorf and Daley Vandergriff spent all three days manning the table at the boat show and were supported by Charle Randall, Wally Veal, Richie Moore, Bill Bradley Ronnie, John Matson and others making the show a success for us. All 400 tickets for the custom rod and reel combo were sold and the winning ticket was pulled by the director of the event, Russ Kostinas. The winner was David Tuck of Virginia Beach. He purchased

the winning ticket on Saturday. I've spoken with him, and we will get the combo to him when he returns from travel. We also sold several chances for the speckled trout raffle the club is doing again this year. Last year's winner caught his personal best speck at 28 1/4 inches. This year we will draw 2 winners and hopefully get the winners on their personal best trout.

The next big event is the club banquet. Right now, the turnout seems to be pretty low so I encourage you to get your reservations made as soon as possible. We planned for 75 attendees and ordered food, etc. accordingly. As of 2/14/24 we have 35 confirmed attendees.

Fishing has been a little slow but there has been some action. Seabass is open until the end of February, but the weather isn't cooperating very well. Speckled trout are still around and although I took a hiatus for January, I am getting

Continued on page 3 Col 1

2024 Club Officers

Stan Simmerman

President

Milton Hudgins

Vice President

Wally Veal

Secretary

Christina Grice

Treasurer

Danny Forehand

Past President

Board of Directors

John Hunt Jr.

Ronnie Wilson

Gary Donaldson

Dailey Vandergriff

Rick Wineman

Charles Randolph

Jenny Williamson

David Agee

Mike Frielingsdorf

Richie Moore

Paul Downey

Johnny Boyd

Gerald Abrams (alt)



Attention all members: This is a reminder that all memberships will now expire on the last day of February of each year. Forms are available from Johnny Boyd (membership committee). At the December 2019 board meeting the board voted to increase the dues by \$10. As before, the \$40 is per individual or family. We haven't had a dues increase in pretty much forever and this will help the club pay for the increased cost of our meeting space as well as supporting events like the picnic, awards banquet, and fishing related events, organizations, and tournaments.

PSWSFA 2024 MEMBERSHIP

Dues: \$40 per year for entire family*
(March through February - not prorated throughout the year)

Name: _____ Spouse: _____

Dependents Names and ages

1) _____ 4) _____

2) _____ 5) _____

3) _____ 6) _____

*Family must be living with you

Address: _____

City: _____ State: _____ Zip: _____ Home Phone: _____

E-Mail: _____ Cell Phone: _____

Boat Name/Call Sign: _____

Total number in your membership: _____

Send this form with a check (payable to PSWSFA) to:

PSWSFA
P.O. Box 5194
Newport News, VA 23605

Please check one of the following:

☐ Yes, please add my name to the club membership book
☐ No, please do not publish my information

President's msg continued from Page 1

back at it this month. It looks like we may make it through the winter without a fish kill and that bodes well for this coming year and the chances for some really huge trout. I wouldn't be surprised if we see some 32 inch or bigger fish.

The Great Bridge Fishing Flea Market will be the first Saturday in March (March 2nd) and we will have two tables there. That will be followed the following Saturday (March 9th) with the Poquoson Kiwanis Flea Market. We will also have a table set up there and I will be doing a presentation from 9 until 10 on speckled trout fishing. This presentation will include some new information that was not presented at the last talk I gave at the club. We will need some assistance manning the tables at both events.

Get out there and fish and try to get a youngster/youngsters out with you. Enter your fish in the monthly tournament and especially the youth entries. I look forward to seeing you at the banquet.

Tight Lines
Stan

Virginia Saltwater Fishing Report

Way South Chesapeake Bay Fishing Report, February 9 Update:

The tidal tributaries in this region hold fish year-round, but it can be hard to locate them in the winter months and even harder to get them to bite at times. Luckily, the fish have to eat, and it is possible to find some hot bites even in the cold weather. One angler checked in after a fantastic day catching red drum in an undisclosed location. They managed to boat around a dozen drum up to 34 inches with plenty of upper slot fish. A great trout report came from a boat fishing in the Elizabeth River this week. They boated over a dozen trout including a citation fish and plenty others over 20 inches. The warm weather forecast for this weekend could turn on the bite, so make sure to get on the water and enjoy the warm temps.

The Virginia Beach boats heading out to take advantage of the special February black sea bass season have been on an incredible bite. As soon as it opened back up Big Worm jumped in on the action and filled their cooler, Playin Hookey Charters had a walk on group of six anglers this week that all caught their limit, and Wreck Dawg Sport Fishing was also out this week and had a few trips that all produced seven-man boat limits. The fish are quality sized right now and coolers are being filled fast, so it is a good time to make a meat run out to the sea bass grounds. There is a little less than three weeks before the fishery closes again, so get it while the getting is good!



February sea bass is on fire, and boats out of Virginia Beach are loving it. Photo courtesy of Big Worm Charters.

Navy Settles Lawsuit Over Weapons Testing In Potomac River

By Timothy B. Wheeler

A dustup over the environmental impact of naval weapons testing in the Potomac River has been resolved, at least for now. The U.S. Navy has agreed to settle a lawsuit filed by two environmental groups over the long-running activity by applying for a pollution discharge permit.

A federal court in Maryland approved a consent decree on Jan. 10 that requires the Navy to apply for a permit from the Maryland Department of the Environment covering any munitions or other test materials that wind up in the river.

The decree resolves claims made in a lawsuit filed in June 2023 by the Potomac Riverkeeper Network and Natural Resources Defense Council. They contended that the Navy has been violating the federal Clean Water Act by firing munitions and releasing chemicals into the Potomac near Dahlgren, Virginia, without a discharge permit.

As Chesapeake Bay Magazine's Cheryl Costello reported, Navy has used the Potomac for more than a century as a proving ground to develop and test small arms, large-caliber guns, explosives, lasers, propellants and targeting systems. The 51 nautical mile stretch of the river downstream from the Naval Surface Warfare Center, Dahlgren Division has been the nation's largest over-water firing range, the groups' lawsuit said.

A 2013 environmental impact statement prepared by the Navy said it annually fires about 4,700 large-caliber projectiles from Dahlgren and sets off more than 200 explosions in the river. It also said it releases substances over the water 70 times a year on average to simulate chemical or biological attacks.

Until now, the activity has gone unregulated, the groups complained, even though they estimated the Navy discharged more than 33 million pounds of munitions into the river since test firing began in 1918. They contend the cannon shells and rockets contain toxic metals, solvents, explosives and other potentially harmful constituents.

The weapons testing at the Dahlgren facility stirred controversy a year ago when boaters and watermen learned of the Navy's proposal to expand its "danger zone" in the river for various testing activities, including the release of "airborne chemical or biological agent simulants, directed energy testing and for operating maned or unmanned watercraft."

Their initial concerns about the impact of repeated closures of the river to watercraft during testing shifted to water quality after Potomac Riverkeeper Dean Naujoks informed them about the volume and kinds of material the Navy had put in the river.

A Navy official initially maintained that the service did not need a permit and that the U.S. Environmental Protection Agency and Maryland and Virginia had concurred. But the environmental groups said that by law the service either needed a discharge permit or a presidential exemption from that requirement, neither of which it had.

In the consent decree, the Navy admits no wrongdoing but agrees to apply for a permit within 30 days. It also agrees to share with the environmental groups all unclassified or nonconfidential information it provides to MDE in its permit application. The groups reserve the right to oppose the permit. And U.S. District Court Judge Deborah Chasanow retains jurisdiction over the case until the final discharge permit is issued.

Virginia waterman Michael Lightfoot welcomed the settlement, saying he is "concerned about water quality and how it could impact our fish and crabs that enable our livelihoods."

Naujoks pledged to work through the state regulatory process "to ensure that Maryland issues a permit that fully protects water quality in the river."

The two environmental groups had also accused the Navy last year of violating the federal Endangered Species Act by not considering the impacts of its weapons testing on protected critical habitat in the river for endangered Atlantic sturgeon. The Navy has agreed to study and consult with the National Marine Fisheries Service about whether its activities are harming sturgeon habitat.



The surface of the Potomac River erupts during weapons testing in 2023. Photo: Potomac Riverkeeper Network

Hampton Roads Boaters Await Deep Creek Dredging Project

By Kendall Osborne / January 30, 2024

Deep Creek, off the James River in Newport News, Virginia, is about to get a much-needed deeper channel. The \$4.28 million project is the result of a partnership between the Army Corps of Engineers and the city of Newport News. The dredging is scheduled to begin on Feb. 15, 2024.

Deep Creek is located on the north side of the James, just prior to the entrance to the Warwick River and Fort Eustis. The small harbor has been serving commercial and recreational boaters for decades. It is lined with both marinas and residences. The harbor itself is not as deep as its name might suggest, at no more than 10 feet and much less in some spots. The creek allegedly got its name from the narrow but deep channel at the entrance to the harbor.



Watermen unload their catch at Menchville Marina on Deep Creek. Keeping the channel navigable is crucial to their livelihood.

The north side of the James River outside Deep Creek is notoriously shallow. At low tide, swimmers from the beach have to walk several hundred feet before they can actually take a swim. Because of that, the channel into Deep Creek is 9,000 feet long. It was previously dredged in 1996 and 2003.

As you enter the harbor, you will find Menchville Marina located on the west side. It has been serving commercial watermen for generations. The James was once famous for its oysters, and many of those were offloaded here. This area is also known for producing seed oysters, and spat collected and distributed from here have been distributed throughout the Bay into Maryland. According to the City of Newport News, Menchville Marina “is a critical component of the Virginia oyster fishery. It serves as a central location on the Peninsula for seafood offloading and distribution for watermen working the lower James River and its tributaries.” In 2021, the marina supported 225 watermen and 90 boats.

Just down from Menchville, find Deep Creek Landing Marina. In addition to slips and fuel, they offer kayak and jet ski rental, a youth sailing program, and event venue. There is even an onsite honeymoon suite. On the north end of the harbor is Warwick Yacht and Country Club. This members-only club offers docking, ramp, and club-type amenities such as tennis, pickleball, dining room and a pool. On the east side is James River Marina, which also offers wet and dry storage as well as fuel.

The dredging plan calls for a 9,000-foot channel that is 100 feet wide and 8 feet deep. It also calls for dredging a 1,900-foot section of the harbor to 8 feet. Approximately 130,000 cubic yards of dredge material will be removed then deposited on Craney Island in Portsmouth, Virginia.

“We are very excited about the dredging improvements,” said Jessica Godfrey, Owner of Deep Creek Landing Marina. “As an active marina and boater, having a navigable channel is essential to our boating community.” Godfrey noted that while the dredging is a great start, the creek has additional areas that need to be dredged to support recreational and commercial boaters.

Danny Dangerfield, who just finished a two-year term as Commodore of the Warwick Yacht and Country Club, had similar comments. He was very thankful for the dredging.

“This was necessary. The channel silts in. There has been a reduction in large vessels and sailboats using the harbor as a result.” He added, “This is maintenance dredging. They are only dredging the existing channel. More work needs to be done.” Like Godfrey, he said additional parts of Deep Creek need to be deepened.

The dredging will impact boaters from February to the middle of June.

LIGHT TACKLE BAYOLOGY: DISAPPEARING ISLANDS AND ERODING SHORELINES

Draining the Chesapeake Bay would reveal now-submerged structural features surrounding islands, drowned islands, and remnants of eroded shorelines including fallen timber, rocks, and ruins. These provide some of today's marine habitat and fishing hotspots for shallow water species like striped bass and speckled trout. We can drain the Bay electronically, in a manner of speaking, using the Digital Elevation Models (DEM) Color Shaded Relief data layer in the Bathymetric Data Viewer (BDV), the online application that enables users to view three-dimensional-like bathymetry.

Island and shoreline composition varies. Where there is marsh, erosion is slow because the consolidated sediment and root systems are more resistant to wave action than unconsolidated lands and soils. For example, Holland Island once hosted a thriving watermen's community with large frame houses, a church, a school, a post office, and a baseball field. Most structures stood on a modest ridge on the west side. When a sod bank along the western shoreline eroded away the sediment banks behind it quickly succumbed, and the community was doomed. All but one of the houses were dismantled, moved, and rebuilt on the Eastern Shore mainland. All that's left are submerged ruins. Further up the Bay Sharps Island disappeared below the waves, leaving natural rock deposits, ruins including the abandoned Sharps Island Lighthouse, and a now submerged icebreaker rockpile. This dynamic process of erosion and shoreline retreat is occurring throughout the entire Bay.

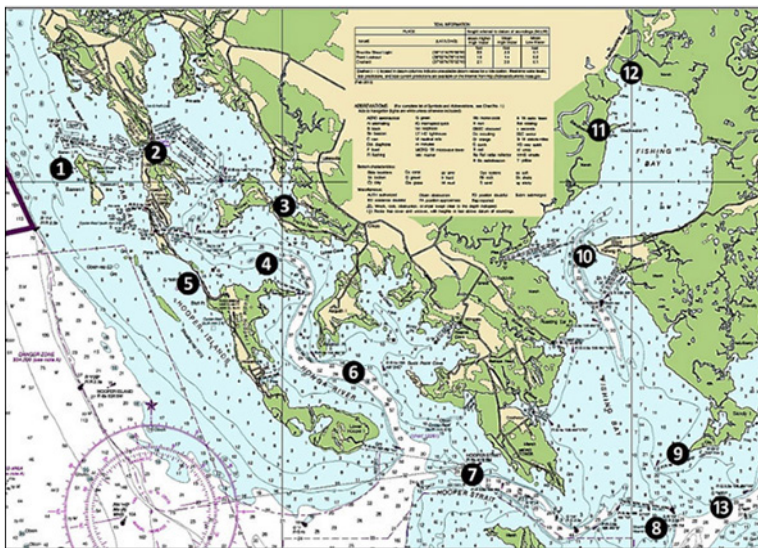


Chart 1: General location of sample fishing spots in and around the Honga River, Hooper Strait, upper Tangier Sound, and Fishing Bay.

As water levels rise and shorelines erode, features formerly on land are now at the water's edge or submerging, such as the fallen observation tower at Adam Island (Image 1 bottom picture). Features we fish have "moved offshore" as the land retreated (Image 1 top insert), and landmarks we used as visual references to find them disappeared. While these changes are bad news for some, they also provide new light-tackle fishing opportunities. Keeping up with these changes to stay current with a system that's in constant flux takes time and effort.

Hotspots to look for often involve exposed points, creek openings, failed shore protection structures, and in some locations, fallen trees and stumps. Once while fishing with "Walleye Pete" Dahlberg, after he carefully approached the marsh edge we drifted through some stumps. Clunk! The outboard skeg had hung up on a submerged stump. Fortunately, raising the motor freed the snag with no damage to the prop. Don't be surprised to find stumps, fallen timber, and ruins hundreds of yards offshore. Well off Bloodsworth Island, for example, there are submerged tanks that were once targets sitting on dry land. So, it's best to not run through near-shore areas at high speed.

Various spots in and around the Honga River, Hooper Strait, Upper Tangier Sound, and Fishing Bay produce when conditions are favorable. Site 1 on Chart 1 is Barren Island. The east side has numerous shoals to avoid. The channel north of the island is narrow and shallow, but usually has sufficient depth for a careful transit by an outboard boat. Normally we would suggest casting to the various shoreline protection structures on the Bay side, but the island is the location for a restoration project and conditions are changing. Rock armor protecting a future dike system will add structural habitat and although project construction will make the site unavailable for a while, keep this spot on your list to check out in the future.

Site 2 is the well-known channel and bridge over Fishing Creek to Upper Hooper Island. Cast and jig here for stripers. Site 3 is "The Canal" at the eastern tip of Wroten Island (Image 2 middle insert), another well-known spot. At various times it holds rockfish, speckled trout, croaker, perch, and flounder. Site 4 is an old wreck. Reported in 1929, it's recorded as an unknown two-masted schooner. Site 5 marks the bridge between Upper and Middle Hooper Island. There's good depth in the channel under the bridge. There's extensive shoal water west of the bridge, and local knowledge is important when approaching from the Bay side. There's much better water depth on the east side. However, working down the west side of Middle Hooper Island, there are segmented breakwaters at the southeast end

of the bridge causeway and multiple spots where there are failed shoreline protection structures.

Site 6 is a general marker for the Honga River. Look for creek openings, points, and islet remnants. Conditions are often difficult even on good days due to strong tidal currents. Look for light structures, rocks, and ruins from Hooper Strait to the entrances to Fishing Bay and the Wicomico Rivers. Site 7 marks Hooper Strait Light, a skeletal steel tower, and importantly, a beaten down, submerged icebreaker rockpile just northwest of the light tower. This one isn't specifically charted, but it sometimes goes hot with stripers so don't pass it by.

Site 8 marks the former Sharkfin Shoal Lighthouse where a skeletal steel platform light replaced the screwpile lighthouse. Historic photos show a large icebreaker rock pile that rose well above the surface. A NOAA investigative survey in 2014 confirmed that the rocks are submerged, but they are there (see Chart 2 insert for the approximate location).

Site 9 marks prospective submerged ruins of Clay Island Lighthouse at coordinates $38^{\circ}13.991 \times 75^{\circ}58.317$, immediately southwest of Phillips Point. There's an underwater spit with as much as a 30' drop-off at Fishing Bay Entrance Light "2FB." Up inside Fishing Bay, the most prominent features are the remnant deepwater channel with its steep edges and the underwater spit that runs out from Fishing Point, both marked in general as Site 10. Sites 11 and 12 mark the Blackwater River and Transquaking River, respectively.

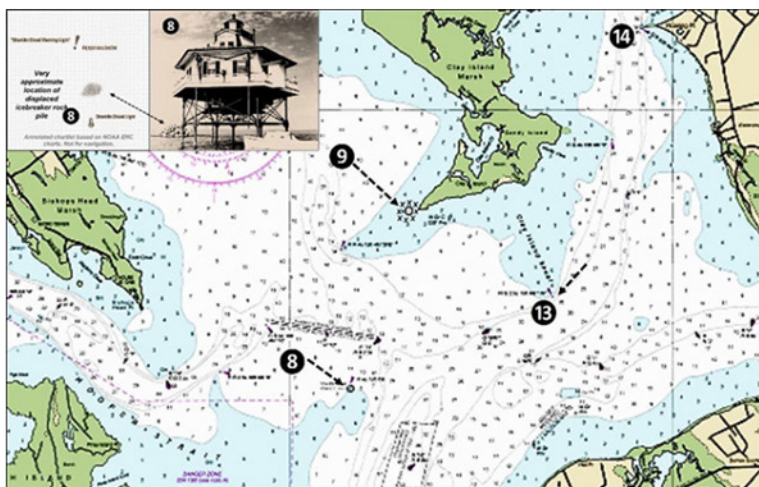


Chart 2: Feature locations in and around upper Tangier.

There's a wreck at Site 13 marked by Clay Island Shoal Lighted Wreck Buoy "WR1." Although no other details are recorded, the fact that it's charted and marked by a warning buoy means something substantial is there. The Nanticoke River also has a deepwater channel that runs well upriver with steep sides. Look for an underwater spit that juts out from Roaring Point (Site 14) just up the Nanticoke River. Also check the rock breakwater ends at Nanticoke Harbor Boat Ramp, Dunn Creek below Bivalve, and Bivalve Harbor.

(No picture for sites 15-22) Site 15 marks Great Shoals Light at the entrance to the Wicomico River. The RNC chart symbol is for a light with riprap protection. Although rock placement isn't mentioned in the construction and maintenance history for the former screwpile lighthouse and none is definitively shown in photos, the symbol indicates that some are under (or in the immediate vicinity of) the skeletal steel tower. A marginal quality U.S. Geological Survey satellite image taken in 2007 and found in Google Earth historic images shows objects which present as subsurface rocks. The shadow is about 75 to 100 feet east of the tower and resembles how subsurface rocks appear at other locations.

The barge (Site 17) on the southern side of Bloodsworth sometimes holds stripers. The offshore end is at coordinates $38^{\circ}08.785 \times 76^{\circ}03.143$. Check out satellite images to see where it lies in relation to the wreck symbol. Just to the south at the middle islet off the north end of rapidly eroding Adam Island (Site 18), a laid over steel tower used to be on firm ground (bottom insert, Image 2). It's now at the water's edge waiting to become an unintentional artificial reef. Remnants of an old corduroy (log) road and other debris are submerged northwest of the tower.

Site 19 marks Holland Island, discussed earlier. South of the island at Site 20 is Holland Island Bar Light where another submerged, beaten down rock icebreaker is located. Site 21 is a general marker for South Marsh Island. Although there are features further south, we're going to close this discussion with the iron caisson "sparkplug" light structure, Solomons Lump Light, at Site 22. It's always worth a few casts when passing through the area.

By Wayne Young

Virginia Charter Boat Workshop Scheduled for March 30th, 2024

The Virginia Charter Boat Workshop will be held on Saturday, March 30th at the Gloucester Point campus of the Virginia Institute of Marine Science, and online via Zoom.

Organized by the Marine Advisory Program at the Virginia Institute of Marine Science (VIMS) in partnership with the Virginia Saltwater Sportfishing Association (VSSA), the workshop will highlight fishery resource, regulatory, and US Coast Guard updates.

This annual workshop enables members of the charter industry to speak with regional and state experts in fisheries and maritime safety. Participants can look forward to presentations from Robert Beal, Executive Director of the Atlantic States Marine Fisheries Commission, in addition to the U.S. Coast Guard, NOAA Greater Atlantic Regional Fisheries Office, and the Virginia Marine Resources Commission. Tips for getting started in the business will also be shared from experienced captains. The workshop is targeted to both established captains and those just getting started (or thinking about starting) in the charter industry. "This workshop helps captains ensure that they are staying up to date with fishery regulations and operating their business safely, in addition to providing networking opportunities with others in their industry," says Susanna Musick with VIMS.

The workshop will be offered in a hybrid format with in-person attendance at the Gloucester Point campus of VIMS and virtual participation via Zoom (based on availability). Advanced registration is required. The workshop is free, but space is limited, so please register before March 22 online: <https://forms.gle/5STES8NQBxrcNVe98>. If you have questions, please contact Susanna Musick: susanna@vims.edu.



Save the Date!

Virginia Charter Boat Workshop

at the Virginia Institute of Marine Science, Gloucester Point

Saturday, March 30, 8:15 – 12:45

Featured speakers: United States Coast Guard
Atlantic States Marine Fisheries Commission
Virginia Marine Resources Commission
NOAA Greater Atlantic Region
Virginia Saltwater Sportfishing Association
Virginia Institute of Marine Science

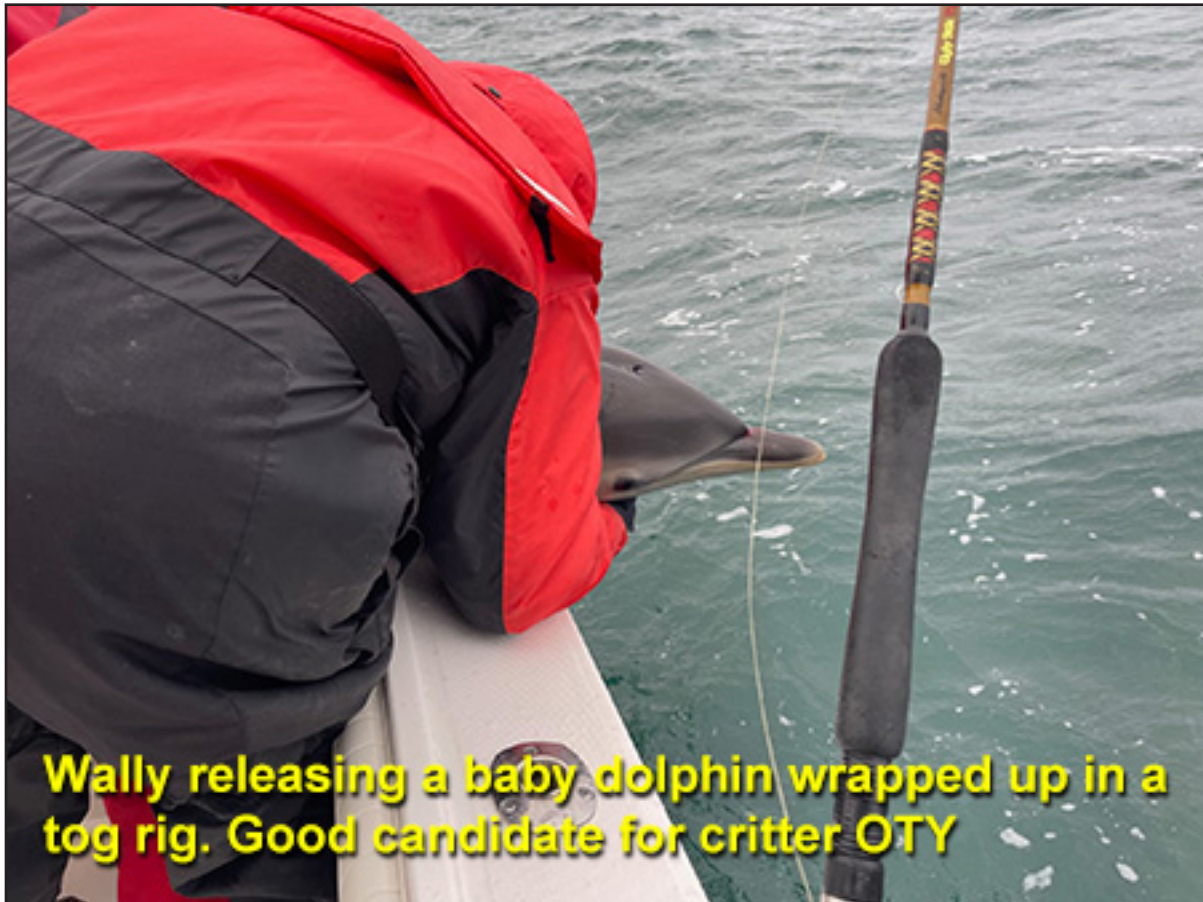
Space limited, register for free:
<https://forms.gle/5STES8NQBxrcNVe98>

Questions? susanna@vims.edu

Just Another Day on the Ocean

While tog fishing on an offshore wreck a small pod of dolphin came through and paid us a visit, swimming along side the boat as they normally do. Shortly after they left my line went screaming off. I was able to stop the fish and reel it in and much to our surprise it was a juvenile two tone dolphin that had gotten tangled in my line. Stan was able to grab the little fella by the tail and we brought it up on the gunnel to remove the line that had wrapped him up pretty good. Stan and I both gently rubbed the dolphin which seemed to calm it down while we removed the line. You could plainly tell that it knew we were helping it out by its demeanor. After a short time the line was cleared and we were able to safely released it back into the water.

Wally Veal



Princess Cruises Pulls Out Of Planned Yorktown Stops Amid Controversy

By Meg Walburn Viviano / February 6, 2024

A two-year pilot program to bring Princess cruise ships to Yorktown, Virginia has been called off after a group of residents assembled to fight the plan. They argued that, while tourism is generally a good thing, the scale of the cruise ships was just too large for the quaint Yorktown waterfront.

Instead of launching a historical cruise pilot program calling on Yorktown this summer, Carnival-owned Princess Cruise Line will move its planned stops to Norfolk. Large cruise ships already come and go from downtown Norfolk's Half Moone Cruise Terminal, located adjacent to the Nauticus marine science center and the floating battleship museum, the USS Wisconsin.

The Island Princess will make its stops in Norfolk instead of Yorktown this summer, after some residents opposed the large ship coming to its smaller port town.



Princess confirmed the change to Chesapeake Bay Magazine, saying in a statement, “To ensure our guests experience legendary Virginian hospitality as they explore the region’s significant historical contributions to American history, Princess is confirming Norfolk on the published itinerary for Island Princess and its three new calls to the Commonwealth this summer.” No Princess cruises are currently scheduled for Yorktown in future years, either.

Back in September 2023 we reported on [mounting opposition to the plan](#) from a grassroots organization called Preserve Yorktown, who started a petition to keep large cruise ships out of the historic waterfront town.

In its [change.org petition](#), the group says it welcomes tourism opportunities. “Tourism has always been a part of Yorktown and smaller, appropriately-sized, cruise ships visit Yorktown regularly – **it is the scale of these massive ships that is inappropriate.**”

They go on to point out that even the smallest Princess ships would dwarf the town’s waterfront, at twice the height of the Coleman Bridge. The group also raised questions about potential pollution from emissions and contaminated waste.

The York County government says Princess notified county officials of its move to Norfolk with the same explanation we received: that the company wanted to ensure its guests “experience legendary Virginian hospitality”.

In response, Interim County Administrator Mark Bellamy said, “York County works year round to welcome visitors who wish to experience our part in the nation’s history as well as our fine dining, shops, events, and hospitality... We hope the collaboration between Norfolk and Princess Cruises is a mutually successful one and also that the ship passengers have wonderful vacations where they make lifelong memories of their travels to Virginia.”

While Preserve Yorktown is happy about the change in direction, the group is continuing its petition drive. In a statement, they say, “We continue to stand against the mega-cruise industry. The cruise industry continues to expand in Virginia and we have not yet received assurances that they will not try again.”

An email from our past president Dr. Ken Neill from Mr. Chris Dollar.

Friends – I'm sending this email as not as a Board member of both the Virginia Anglers Club and Virginia Saltwater Sportfishing Assoc., and by no stretch of the imagination am I a lobbyist (scary thought); I'm simply one of thousands of business owners whose livelihood depends on unfettered access to the Bay and healthy fisheries.

Likely backed by the menhaden industrialized reduction fishery, two bills that could arguably be called "Omega Protection bills" are moving very fast through Virginia's General Assembly, apparently. They are **HB 928 Interference with Commercial Fishing Vessel** (Hillary Kent) and a similar HB 1465 (Rob Bloxom).

Contact your elected representatives and voice your strong opposition to both of these "Omega Protection bills." Not only do they run counter to Gov. Youngkin's stated policy of no new regulations – esp. unwarranted ones – reasonable and enforceable laws against on-water harassment are already on the books at both the state and federal levels.

The proposed bills are nothing more than a solution in search of problems and would likely stretch thin marine law enforcement unnecessarily. It is also perhaps another not so veiled attempt by the industry's lobbyists to try and intimidate recreational anglers and boaters who are exercising their right to enjoy the public resources of Chesapeake Bay that our tax dollars pay to conserve and rebuild.

Thanks for your consideration.

Chris\$

Last Month's Mystery Fish Scaled-Rayed Wrasse



The scale-rayed wrasse, *Acantholabrus palloni*, is a species of wrasse native to the eastern Atlantic Ocean where it occurs from Norway to Gabon (including the various eastern Atlantic island groups) and in the Mediterranean Sea and the Adriatic Sea. This species can be found on reefs at depths of from 30 to 500 m (98 to 1,640 ft). It can reach a length of 25 cm (9.8 in). It is a commercially important food fish. It is currently the only known member of its genus.

Adults inhabit coastal waters near rocky or sandy bottoms. Feed on benthic invertebrates

Life cycle and mating behavior

Oviparous, distinct pairing during breeding. Males build dish shaped nests and guard the eggs.

Distribution

Eastern Atlantic: Norway south to Cape Lopez, Gabon and including Madeira, Azores and the Canary Islands. Also in the Mediterranean and Adriatic seas.

Slightly Dangerous

Will attack humans on site generally going for the eyes. Which they consume with gusto.



Virginia Recreational Saltwater Fishing Regulations

*Last Revised
January 2024*



Atlantic Croaker

- Minimum Size Limit: No size limit
- Recreational Bag Limit: 50 per person; additional 50 live bait per customer capacity on for-hire or charter vessels



Spot

- Minimum Size Limit: No size limit
- Recreational Bag Limit: 50 per person; additional 50 live bait per customer capacity on for-hire or charter vessels



Kingfish

- Minimum Size Limit: No size limit
- Recreational Bag Limit: No bag limit



Grey Trout (Weakfish)

- Minimum Size Limit: 12 inches
- Recreational Bag Limit: 1 per person



Bluefish

- Minimum Size Limit: No size limit
- Recreational Bag Limit: 3 per person from shore or a rented or private vessel
- 5 per person on for-hire or charter vessels



Spanish Mackerel

- Minimum Size Limit: 14 inches
- Recreational Bag Limit: 15 per person



King Mackerel

- Minimum Size Limit: 27 inches
- Recreational Bag Limit: 3 per person



Cobia

- Minimum Size Limit: 40 inches
- Recreational Bag Limit: 1 per person or 2 per vessel, whichever is more restrictive. Only 1 fish per vessel may be greater than 50 inches total length.
- Season: June 15 - September 15
- Gaffing prohibited



Summer Flounder

- Minimum Size Limit: 16 inches
- Recreational Bag Limit: 4 per person



Striped Bass

Any person fishing striped bass recreationally shall use non-offset, corrodible, non-stainless steel circle hooks when fishing with bait.

Chesapeake Bay Spring Season

- Size Limit: 20-28 inches
- Recreational Bag Limit: 1 fish per person
- Season: May 16 - June 15

Chesapeake Bay Fall Season

- Size limit: 20-31 inches
- Recreational Bag Limit: 1 fish per person
- Season: October 4 - December 31

Coastal Season

- Size Limit: 28-31 inches
- Recreational Bag Limit: 1 per person
- Season: January 1 - March 31, May 16 - December 31

Select species provided for information purposes only. Not all regulated species are included. All regulations are subject to change. It is the angler's responsibility to know and abide by all current regulations and laws. Check for new regulations before you go fishing.
www.mrc.virginia.gov



Spadefish

- Minimum Size Limit: No size limit
- Recreational Bag Limit: 4 per person



Sheepshead

- Minimum Size Limit: No size limit
- Recreational Bag Limit: 4 per person



Black Sea Bass

- Minimum Size Limit: 13
- Recreational Bag Limit: 15
- Season: Feb 1-29 (permit required); May 15-July 15, July 27-Dec 31



Tautog

- Minimum Size Limit: 16 inches
- Recreational Bag Limit: 4 per person
- Season: January 1-May 15, July 1- Dec. 31



Speckled Trout

- Minimum Size Limit: 14 inches
- Recreational Bag Limit: 5 per person, only 1 greater than 24"



Red Drum

- Minimum Size Limit: 18 inches
- Maximum Size Limit: 26 inches
- Recreational Bag Limit: 3 per person



Black Drum

- Minimum Size Limit: 16 inches
- Recreational Bag Limit: 1 per person

PSWSFA SPONSORS

PSWSFA would like to thank our sponsors for their support



L&S Bait Company 1415 E Bay Dr, Largo, FL, 33771

Phone (727) 584-7691 www.shopmirrolure.com



Capt. Michael Hanna, President
mhanna@southernbayyachtsales.com

757-810-7152

<https://www.southernbayyachtsales.com>

FAITH ~ FAMILY ~ BOATS



PSWSFA SPONSORS

PSWSFA would like to thank our sponsors for their support



MULTIPRINT
INCORPORATED

DESIGN • PRINT
SCREEN PRINT • EMBROIDERY
PROMOTIONAL ITEMS

(757) 244-6800
www.multiprintinc.com
orders@multiprintinc.com



TROY
MARINE
757-238-8746



Andrea's
Italian Restaurant & Pizzeria



STERLING MARINE



FISH TALES



A cold day for Charles catching Tog



Jack Fricks and 29" Blue Cat



Rick and nice sea bass - thrown back



Wally with sea bass - also sent back

Monthly Tournament List December 2023

Sea Bass

Barclay Shepard 24.5"

Speckled Trout

Stan Simmerman 29.75"

Bluefish

Wally Veal 26"

Monthly Tournament Contenders	
Species	Min Size
Albacore Tuna	35"
Amberjack	40"
Bigeye Tuna	40"
Black Drum	40"
Blackbelly Rosefish	14"
Blackfin Tuna	45"
Bluefin Tuna	45"
Bluefish	25"
Blueline Tilefish	20"
Blue Marlin	Release
Channel Bass - Drum	40"
Cobia	40"
Croaker	16"
Dolphin	35"
False Albacore	25"
Flounder	22"
Golden Tilefish	30"
Gray Trout	24"
Grouper	16"
Jack Crevalle	36"
King Mackerel	35"
Pompano	12"
Sailfish	Release
Sea Bass	15"
Shark	60"
Sheepshead	15"
Snapper	12"
Spadefish	18"
Spanish Mackerel	20"
Spearfish	Release
Speckled Trout	21"
Spot	8"
Striped Bass	36"
Swordfish	Release
Tarpon	Release
Tautog	18"
Triggerfish	15"
Wahoo	40"
White Marlin	Release
Whiting (Roundhead)	14"
Yellowfin Tuna	35"

Photo taken Oct 2022 by the Editor at Hapuna Beach, Hawaii

Bring your entries to Milton at our monthly meeting by 7:00 pm or send an email or snail mail to the address' on the left (Yellow Box). Please direct any questions to Milton.

MAIL ENTRY FORMS TO:
MR. MILTON HUDGINS
1894 KATIE LANE
HAYES, VA 23072
(e-mail: judygee03@gmail.com)

Deadline for turning in your 2024 entry forms:

Month of Entry	Deadline (RegMtg)	Month	Deadline (Reg Mtg)
January	13 Feb	July	20 Aug
February	19 Mar	August	17 Sep
March	16 Apr	September	17 Oct
April	21 May	October	19 Nov
May	18 Jun	November	17 Dec
June	16 Jul	December	by Brd Mtg 14 Jan 2025



Three ways to turn in your forms:

- hand deliver to monthly meetings
- e-mail to judygee03@gmail.com
- mail to: Milton Hudgins, 1894 Katie Lane, Hayes, VA 23072

OFFICIAL ENTRY FORM

ELIGIBLE SPECIES

Albacore Tuna	35 in.	Pompano	12 in.
Amberjack	40 in.	Sailfish	Release
Bigeye Tuna	40 in.	Sea Bass	15 in.
Blackbelly Rosefish	14 in.	Shark	60 in.
Black Drum	40 in.	Sheepshead	15 in.
Blackfin Tuna	20 in.	Snapper	12 in.
Bluefin Tuna	45 in.	Spadefish	18 in.
Blueline Tilefish	20 in.	Spanish Mackerel	20 in.
Bluefish	25 in.	Spearfish	Release
Blue Marlin	Release	Speckled Trout	21 in.
Channel Bass	40 in.	Spot	8 in.
Cobia	40 in.	Striped Bass	36 in.
Croaker	16 in.	Swordfish	Release
Dolphin	35 in.	Tarpon	Release
False Albacore	25 in.	Tautog	18 in.
Flounder	22 in.	Triggerfish	15 inches
Golden Tilefish	30 in.	Wahoo	40 in.
Gray Trout	24 in.	White Marlin	Release
Grouper	16 in.	Whiting (Roundhead)	14 in.
Jack Crevalle	36 in.	Yellowfin Tuna	35 in.
King Mackerel	35 in.		

I HEREBY CERTIFY THAT THE FOLLOWING STATEMENTS ARE THE TRUTH, AND THE RULES OF THIS CONTEST HAVE BEEN COMPLIED WITH (see back of this sheet).

NOTE: Copies of release citations with this form are acceptable.

Required Information:

Tournament: _____ Fish: _____

Date Caught: _____ Time Caught: _____ ^{circle one} am / pm Length: _____

Name (printed): _____ ^{check one:} ☐ Adult ☐ Youth

Signature: _____ Witness Signature: _____

Optional Information:

Weight: _____ Where Caught: _____

Weight Master Signature: _____

All Club Tournaments (Except as noted on front):

- Entry Fees: \$20 for member & \$30 for non-member. Youth and Ladies croaker/Spanish mackerel tourney is free.
- Rules and Entry Fees listed below do not apply to the Sheepshead Tournament. This is a sperate paid entry tournament.
- You must register before fishing by e-mailing Rick Wineman: rick@getanetsportfishing.com or call 757-268-1539.
- Leaving a message will be sufficient to register, give all anglers names (specify club members and club guest), and also give a phone number.
- Guest(s) must fish with at least one member on boat/shore/pier/kayak
- Use a club "Official Entry Form" and weigh in fish at any Va. Saltwater Tournament official weigh station for weight tournaments. Record the weight of fish, date and time caught and have the weigh master sign the form to verify catch. If two identical fish are caught on the same day, the earlier fish wins. That is why time is so important. Length tournament entries require witness or photo.
- All pertinent PSWSFA bylaws apply.

**To register or ask questions, e-mail Rick Wineman, Tournament Director
at rick@getanetsportfishing.com or call Rick @ 757-268-1539**

MEASURING INSTRUCTIONS

With the fish lying on a flat surface, measure in quarter inch increments, from the tip of the mouth to the tip of the tail with the fish in a natural position and the mouth closed.



www.pwsfa.com

Fishing Around the World

Saltwater Sport Fishing in Peru



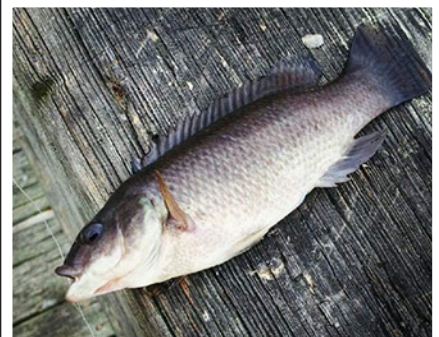
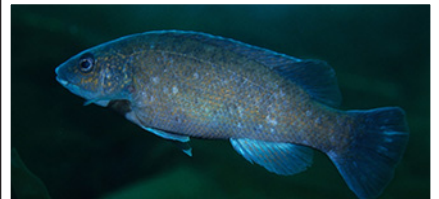
This is done all along Peru's vast Pacific coastline, and is broken down into two types: shoreline fishing, whether from the beach or from clifftops, and in a boat. Fishing on beaches is the most common form in Peru. Species like flounder, croaker and grunt are the best catches along the sandy beaches of Peru's central and south coast.

To the north, fishermen along the beach tends to reel in drums and pompano.

Fishing from the bluffs, meanwhile, is done all along the coast, and fishermen just need rocky crags to have a cast. Species caught include grunt, rock bass and local species such as cherlo, tramboyo and pintadilla. In both areas, fishermen tend to use as bait the tiny crustaceans called muy muys that live in the sand, wedge clams and snails.

Fishing from the back of boats is also divided into two kinds: pinteo, or fishing from an anchored boat, and trolling from a moving launch. Pinteo fishing along the central and south coast usually catches the same varieties as clifftop fishing, adding cuskeel, sea bass and smoothhounds in the north. Trolling, meanwhile, is usually done off the north coast using artificial bait, reeling in tuna, black marlin and local species such as cherela, agujilla, sierra, pluma and perico.

So you think you know
your Fish
What is it?





As a member of Peninsula Salt Water Sport Fisherman's Association,
a BoatU.S. Cooperating Group, you are invited to become a BoatU.S. Member
at a special rate:

\$15 Boat U.S. Membership Dues and 10% off Water Towing Services

BOAT U.S. COOP GROUP #: Contact Gary Donaldson at
GaryD66@Cox.Net
For the PSWSFA Coop group #

NEW MEMBERS

Sign up online at BoatUS.com/Join
(enter your BoatU.S. Coop Group #
on the first page of the application)

CURRENT MEMBERS

Not receiving the discount? Email
Membership@BoatUS.com

MEMBERSHIP BENEFITS INCLUDE:

- 24/7 Dispatch to over 600 towboats in 300+ ports nationwide
- Marine insurance for boaters with 24/7 claims service
- Discounts on fuel, slips, repairs & more at over 1,200 boating businesses nationwide
- Subscription to *BoatU.S. Magazine* – 6 issues per year

Visit BoatUS.com/Membership to learn about all benefits
and services offered to BoatU.S. Members.

09/11/11 BTY



INSURANCE



DISCOUNTS



MAGAZINE



SAFETY



ADVOCACY



TOWING



TRAILER SERVICE



DISCOUNTS

www.boatus.com



ANNUAL *Fishing Flea Market*

MAJOR
SUPPORTERS



March 2, 2024
8:00 am - 2:30 pm

VIRGINIA BEACH FIELD HOUSE

Free Raffles!

50/50

Best Locations Go Fast. Register Now!

Come buy, meet, greet, and eat !!

- New & Used Rod & Reels
- Fresh & Saltwater Gear
- Custom Lures
- A Variety of Boats & Trailers
- Hot Food & Cold Refreshments
- Admission \$5 (Children 12 & Under Are Free)
- **FREE PARKING**
Over 3,000 customers in the past year

NEW LOCATION!

Virginia Beach Field House
2020 Landstown Centre Wy,
Virginia Beach, VA 23456

**NEW
LOCATION!**

Butch - tbpocan@aol.com 757-287-0330
George - geva1963@cox.net 757-421-7333
Lavern - rv2mnts@gmail.com 757-974-3090

You are invited to visit or join the best fishing club in Tidewater. Each month the club has a speaker to present an informative program on various local fishing topics. Check us out at www.fishgbfa.org

Or Visit facebook.com/GreatBridgeFishermansAssociation

- Monthly Newsletter • Annual Awards Banquet
- Fishing Tournaments (Boat & Surf) • Special Events such as Oyster Roasts & Picnics
- Philanthropic Events to Benefit Organizations such as Hope House and Wish-A-Fish
- 12 High School Scholarships Presented in 2023

Directions to PSWSFA Meeting

Former St Mark's Episcopal Church Now used by Peninsula Baptist Church

From 64 (either direction) take the Mercury Blvd exit towards the James River Bridge (West) stay in the right hand lane and turn right at the light onto Todds Lane. Go past Zaxby's chicken about 400 ft and the driveway to the church is on the right. The original St, Mark's sign is still on the lawn just short of the driveway with a new Baptist church message.

If you come to the traffic light at the intersection of Cunningham you went to far. Turn right on Cunningham and look for the Cunningham entrance to the church (500ft). If you miss it you will need to do a U-turn on Cunningham and go left onto Todds Lane.

The church driveway is just short of the Bercuese Funeral home entrance or just after it if coming from Cunningham.

WHAT'S UP NEXT & BEYOND



2 March - Great Bridge Fishing Flea Market



9 March - Poquoson Fishing Flea Market



19 March - First member meeting of 2024

Guest speaker is Bob from Bob's Trailers.

PENINSULA SALT WATER SPORTS FISHERMAN'S ASSOC.

P.O. Box 5194

NEWPORT NEWS, VA 23605

