

The PSWSFA is a family-oriented fishing club established in 1957. Our meetings are held on the 3rd Tuesday of each month (March-Dec.) at 7:00pm. The meetings are free and open to the public and are a great place to swap stories with other local fishermen, find new fishing partners and plan trips together. We have raffles with nice giveaways-donated by local businesses plus prizes we buy ourselves. Each month we have speakers sharing their experience on one of the local fisheries. Come join us and get to know some of the other fishermen in your local area. Directions on last page. You can visit us at www.pswsfa.com.

Next Meeting

17 Oct 2023 7:00pm (1900)
see last page for directions

Another month in the books. At least it's not 90+ degrees.

Upcoming events in 2024 include the 2-4 February boat show at the VA Beach convention center, and the Great Bridge Fishing Flea Market at the Va Beach Field House on March 2nd.(See the flyer on page 20) we are planning on getting another high-end custom rod made so we can raffle it off at both of those shows and to our members. Drawing will be at the March meeting.

If you have nothing better to do this coming April 8th you might want to make arrangements to view the solar eclipse that passes through SW Texas and up into northern Maine.

Here is the link to the NASA site for more information which also has a link to a big map showing the details.

[NASA Link](#)

Stay well - Mike the Editor

Remember, Blue text within an article represents a Link

FROM THE PRESIDENT

We are also looking at setting up a committee to investigate/initiate various forms of social media activities to broaden the reach of PSWSFA and to attract new member.

As I stated last month all of the summer species are here. Flounder fishing is better than it has been in many years. There are some big specks making a showing and it will only get better. I took Stan Svrlinga out last Friday. Stan paid the club \$150 to fish with me for a day so that he could learn about speckled trout fishing. We started at 5AM and fished until 11AM with only 1 18" and a couple of dinks. At 11 I made the decision to move to another area so we loaded up my boat and headed to the peninsula where we fished until 8:30PM. We managed to finally find some fish and caught several 18s, a 20 ½ a 23½ and a 25 inch citation. The hope was to get him onto a citation but that didn't happen. He was only ½ inch short but he was a pretty happy camper. All the fish were tagged and release except for 3 that he kept for dinner. Puppy

drum are almost everywhere. Flounder fishing is still very good with a lot of big fish being caught and that should continue through October. Flounder are also being caught in shallow water areas of the Hampton Bar, Mill Creek, Back River, etc. Cobia are schooling up and are being found in larger groups. The season is over but catch and release is still fun. Sheepshead are everywhere including inside Back River. Offshore there are still mahi, some tuna and wahoo season is upon us.

I hope to see all of you at the October meeting when Danny Taylor will teach us how to catch trophy flounder. Again, bring a guest with you to the meeting. Get out there and fish and try to get a youngster/youngsters out there fishing with you. Enter your fish in the monthly tournament and especially the youth entries. I look forward to seeing you at the meeting.

Tight Lines,
Stan

2022 Club Officers

Stan Simmerman

President

Milton Hudgins

Vice President

Wally Veal

Secretary

Christina Grice

Treasurer

Danny Forehand

Past President

Board of Directors

John Hunt Jr.

Ronnie Wilson

Gary Donaldson

Dailey Vandergriff

Rick Wineman

Charles Randolph

Jenny Williamson

David Agee

Mike Frielingsdorf

Richie Moore

Paul Downey

Johnny Boyd

Gerald Abrams (alt)



Attention all members: This is a reminder that all memberships will now expire on the last day of February of each year. Forms are available from Johnny Boyd (membership committee). At the December 2019 board meeting the board voted to increase the dues by \$10. As before, the \$40 is per individual or family. We haven't had a dues increase in pretty much forever and this will help the club pay for the increased cost of our meeting space as well as supporting events like the picnic, awards banquet, and fishing related events, organizations, and tournaments.

PSWSFA 2023 MEMBERSHIP

Dues: \$40 per year for entire family*
(March through February - not prorated throughout the year)

Name: _____ Spouse: _____

Dependents Names and ages

1) _____ 4) _____

2) _____ 5) _____

3) _____ 6) _____

*Family must be living with you

Address: _____

City: _____ State: _____ Zip: _____ Home Phone: _____

E-Mail: _____ Cell Phone: _____

Boat Name/Call Sign: _____

Total number in your membership: _____

Send this form with a check (payable to PSWSFA) to:

PSWSFA
P.O. Box 5194
Newport News, VA 23605

Please check one of the following:

☐ Yes, please add my name to the club membership book
☐ No, please do not publish my information

Virginia Beach Fishing

14 Oct 23

Fall is a great time to enjoy fishing. The Bay water temperature has decreased to 68.0 degrees, which makes the fish more active.

The rockfish season opened in Bay and its tributaries on October 4th and will last until December 31st. You can find them near bridges, old piers and docks. Fishing under lights at night is an excellent option. The slot limit for the Bay and all Virginia tributaries is 20-31 inches and the bag limit is 1 fish per person.

Another fish you can target is red drum, they are still present in the bay and in the Sandbridge surf, where you can use cut bait or crabs to attract them.

Speckled Trout are also available in local inlets and rivers. They love live shrimp, which are exiting the marshes and Bay tributaries now. You can also use topwater baits or popping corks with fresh soft crab or other fresh cut baits to catch them.

Spot are moving in large schools along Bay and oceanfront beaches. They will bite on bloodworms, squid or shrimp. They are delicious fried or made into fish cakes.

The best place to catch flounder is in the lower part of the bay and the ocean. Spot are excellent bait for large flounder.

Sheepshead are still biting in the area of the Chesapeake Bay Bridge Tunnel (CBBT).

Some nice King Mackerel were caught off Virginia Beach last week. They require good tackle ... and live baits are best. They are very strong and fast and will smoke your drag! They can weigh up to 50 pounds and offer a great challenge.

Offshore you can catch Tilefish, Dolphin, Tuna and Swordfish. Captain David Wright on the High Hopes had a fantastic day October 11th, pictured above.

If you fish the Triangle wreck, look for plenty of sea bass and a few trigger fish.



PSWSFA Club members with their citation flounders



Dave Barnhart with nice King!

Encouraging news for underwater grasses in Chesapeake Bay, despite “mystery” losses around Gunpowder and Middle Rivers

by VIMS Staff & Jake Solyst, Chesapeake Bay Program | July 6, 2023

An annual survey led by VIMS researchers mapped 76,462 acres of underwater grasses in the Chesapeake Bay and its tributaries in 2022. Their report, published today, documents a 12% increase in submerged aquatic vegetation (SAV) in the regions mapped by the team, with lead researcher Dr. Christopher Patrick noting, “For the most part, we had a really encouraging year for SAV throughout the Bay.”



Underwater bay grasses are a vital part of the Bay’s ecosystem. They provide habitat and nursery grounds for fish and blue crabs, serve as food for animals such as turtles and waterfowl, clear the water by reducing wave action, absorb excess nutrients, and reduce shoreline erosion. VIMS tracks the abundance of underwater grasses as an indicator of Bay health for the Chesapeake Bay Program, the federal-state partnership established in 1983 to monitor and restore the Bay ecosystem. Using aerial surveys flown from late spring to early fall each year, VIMS researchers estimate the acreage of underwater grasses present in the Bay.

Trends in Salty and Fresh Zones

The VIMS team continued its practice— first introduced in 2013—of categorizing abundance using 4 different salinity zones, which are home to underwater grass communities that respond similarly to storms, drought, and other growing conditions.

Some trends emerge across the salinity zones. Saltier areas continued to regain ground that was lost in the 2019 crash, with expansion of both eelgrass and widgeongrass. Patrick attributes this to continued nutrient management efforts and cool summers associated with La Niña. He points out that “the real test for those zones will be summer 2024 when hot summer temperatures, a known stressor of eelgrass, return with the predicted El Niño cycle.” The research team will assess those impacts, if they come to pass, in spring 2025. Grasses in the freshwater areas held nearly constant, with some areas within the zone exceeding attainment goals.

Between 2021 and 2022: Graphic on page 5

- Bay grass abundance in the Bay’s fresh waters (the Tidal Fresh Salinity Zone) fell 73 acres (from 19,179 acres to 19,106 acres).
- Bay grass abundance in the Bay’s slightly salty waters (the Oligohaline Salinity Zone) fell 1,239 acres (from 8,384 acres to 7,145 acres).
- Bay grass abundance in the Bay’s moderately salty waters (the Mesohaline Salinity Zone) increased 6,841 acres (from 24,091 acres to 30,932 acres).
- Bay grass abundance in the Bay’s very salty waters (the Polyhaline Salinity Zone) rose 2,829 acres (from 16,371 acres to 19,200 acres).

Continued on page 5

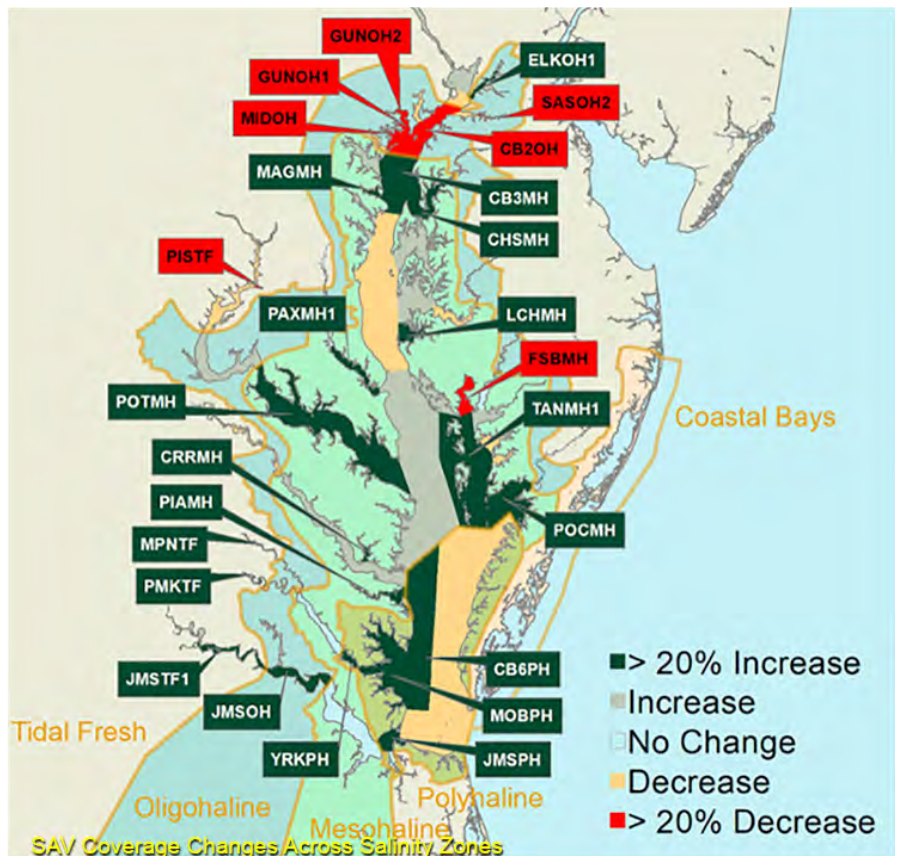
Diving Deeper: Losses in the Oligohaline Salinity Zone

In 2022, there was a significant localized decline of more than 40% around the Gunpowder and Middle rivers, which are part of the slightly salty Oligohaline Salinity Zone. According to Patrick, “Given that this loss was localized and didn’t affect segments on the western shore to the north, it’s likely caused by something happening with Gunpowder River watershed. We noted some significant turbidity spikes in the spring in that area that may have something to do with the decline. Ultimately, it’s something that demands more investigation to identify the cause to ensure it doesn’t happen again in the future.”

Absent the mysterious losses around the Gunpowder and Middle Rivers, the 2022 report would have recorded a remarkable 18% increase in Chesapeake Bay SAV prevalence.

Local Highlights

Underwater grass abundance can vary from species to species and river to river. In 2022, other local highlights included:



Gunpowder and Middle Rivers: Roughly 1,500 acres of underwater grass were lost in Gunpowder and Middle Rivers (over 40%), which accounted for 15% of the loss seen in the Bay’s Oligohaline Zone (slightly salty area). The reasons for the significant losses seen in this small area are unknown, and require further investigation by Bay scientists.

Susquehanna Flats: The resurgence of underwater grass in the Susquehanna Flats has been occurring over the past several years, and in 2022, the segment gained another couple hundred acres.

Tangier Sound: Both Maryland and Virginia’s portion of the Tangier Sound gained thousands of acres of underwater grass, increasing by 54%. These healthy grass beds will serve as high quality habitat for blue crabs, which is good news for crabbers working around Smith and Tangier Islands.

Mobjack Bay to Poquoson Flats: The Mobjack Bay to Poquoson Flats, which is an area of the Bay dominated by eelgrass and widgeon grass, increased by 27%. Underwater grass abundance came close to reaching the record high from 1997.

Pocomoke River: The lower Pocomoke River in Virginia increased by 32%, while the middle and upper parts of the river remained steady.

Pilot On The Ladder

For Bay Pilots, Getting to the Top Isn't Easy

story & photos by Bill Band

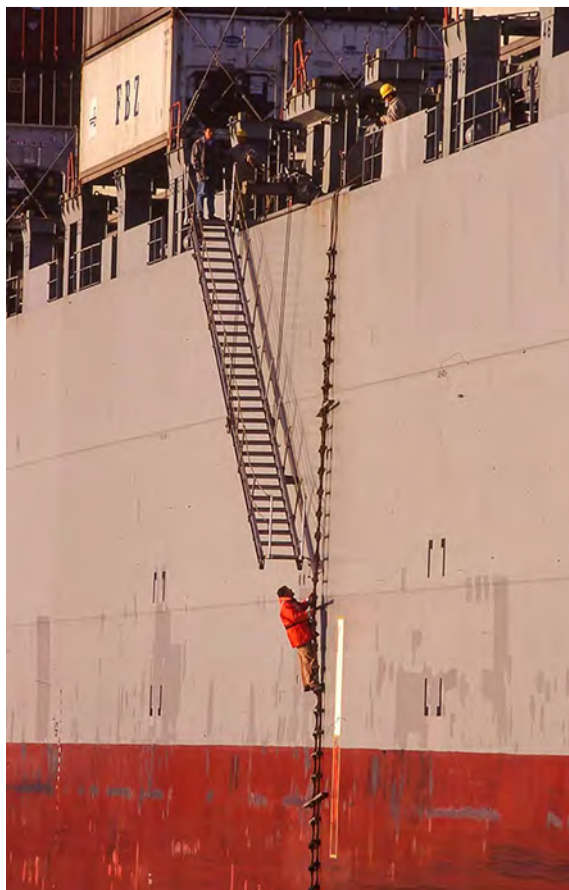
It was just a routine trip up the Bay. At 19:30 I had boarded the Polish-flagged bulk carrier at the Chesapeake Bay entrance, and nine hours later I was approaching the Annapolis anchorage. The ship was to anchor there, waiting for her berth to clear in Baltimore a few days later.

On this March night, the wind had been picking up for a couple of hours, blowing at 20 knots with higher gusts from the NNE. The pilot ladder was rigged on the starboard side, one meter above the water, allowing the pilot boat to lay into the side of the ship without damaging the ladder. We were light draft, permitting me to go deep into the anchorage, steering towards the Severn River entrance. All the while slowing down, I made a sweeping turn to the east, which gave me a good lee for getting off once anchored. My boat, Pilot Express, was sitting a short distance off, waiting to see me at the top of the ladder I would begin to descend.

Considering the calm water afforded by the lee I created, it should have been a straightforward matter for the boat to slide in and get me. It didn't work out that way.

Once anchored, there was a slight delay in getting my pilot order signed, and the ship's captain wanted to chat. He seemed oblivious to the conditions outside as the ship began to weather-vane. Standing on the bridge and looking over his shoulder, I could see the bow swinging towards the Bay Bridge spans in the distance. As politely as I could, I cut the conversation short and almost ran down the ship's ladderwell to get to the main deck. Once there, I was surprised to see that the chief mate had pulled the Jacob's ladder up onto the deck and was beginning to disassemble it. Realizing his mistake, he immediately began to secure it back over the side. By the time all was ready, there was no more lee; instead, there was a two- to three-foot sea running down both sides of the ship.

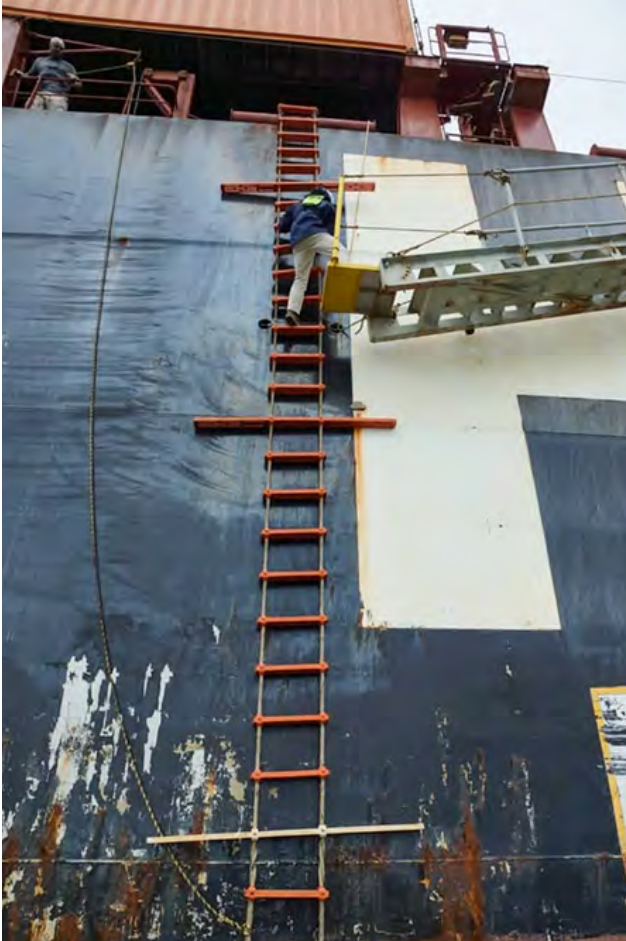
Looking at the Pilot Express now dancing in the waves, I decided I might get a better look at the conditions if I descended the ladder partway. After all, I was tired and wanted to get home. I convinced myself that things weren't too bad and called the boat in. The operator expertly maneuvered the boat below the ladder. Trying to time my transfer, I watched the boat's motion over the waves running down the side of the ship. This was not easily predictable in the dark. I stopped a few feet above the pilot boat's handrail. While holding on to the Jacob's ladder with my left hand, I reached down to catch the handrail with my right as the boat reached the apex of the next wave. At that point I would transfer over. I was a hair's breath from letting go of the ladder when the pilot boat suddenly dropped away. I heard crewmen on the main deck shout in alarm as I swung out from the side of the ship. The boat rose up on the next wave and brushed the back of my legs, almost lifting me off the ladder. It was a heart-stopping moment. The boat operator immediately powered ahead, allowing me to collect myself before making another attempt. This time, when he drifted back I was able to make a smooth transfer.



Continued on page 7

Heading back to the dock in Annapolis, none of us spoke. The deckhand, the boat operator, and I were lost in our thoughts of what almost happened. Had I fallen into the 40-degree water, even wearing my float coat, there would have been little time to rescue me in the dark. My desire to get off the ship almost killed me.

In piloting, there are two important aspects to the job. First and foremost is to have the knowledge and skill to navigate ships—some longer than 1,200 feet and weighing 200,000 tons—safely on Chesapeake Bay. In Maryland, the path is usually to and from the port of Baltimore. As pilots, we are guardians of the environment. Our sole responsibility is to ensure the safe movement of ships on the entire Chesapeake Bay and its tributaries. This is a responsibility shared with the Virginia pilots to the south and the Delaware pilots on the C&D Canal.



The second thing is to be able to board and disembark safely. People aboard passenger ships sometimes witness the pilot transfer, which usually involves stepping off a pilot boat onto a few rungs of a rope ladder and into an opening in the ship's side. Although this can be dangerous at times, it is nothing like climbing 25 feet or higher up the side of a merchant ship, particularly in foul weather. A slip from these heights has serious consequences, especially if the pilot should land on the deck of the pilot boat.

A ship will usually contact the pilot tower two hours out from the Capes. The pilot tower is located near the Cape Henry lighthouse and shared by both the Maryland and Virginia pilots. Its personnel act as informal traffic advisors and appoint pilots to their ships. They will also direct the ship's personnel as to which side to hang the ladder for the best lee.

Boarding or disembarking ships requires close attention. If the bottom of the ladder extends below the deck of the pilot boat, the deckhand will pull the excess onto the deck. As the ship rolls, the pilot watches the motion of the ladder. He or she will then grab hold of the ladder as high up as possible and move quickly to get well above the pilot boat. Failure to do so risks getting knocked off the ladder or pinned against the side of the ship by a spirited, 50-ton (gross) vessel moving in the seaway. Typical boarding speeds are between 8 and 10 knots.

On December 30, 2019, a Sandy Hook pilot died in a fall onto a pilot boat while boarding the Maersk Kensington, a U.S. flag container ship bound for the terminals at Newark, NJ. The accident occurred at 04:30, and as of this writing is still being investigated.

On February 4, 2007, a pilot was lost at sea while boarding the Energy Enterprise, a U.S. flag coal ship bound for Baltimore, at the Delaware Capes. He was partway up the ladder when he fell between the pilot boat and the ship. The time was 18:30, and in the darkness he was never seen again. Pieces of his float coat were later found wrapped in the pilot boat's propeller.

Continued from page 7

There are approximately 1,300 pilots in the USA. On average, there is one death or injury every year resulting from falls.

A pilot boat crew usually consists of a boat operator and a deckhand. These highly trained and experienced professionals literally have the lives of the pilots in their hands. When to stand off a ship, when to move in, when to request a reduction in speed or call for more of a lee falls to their good judgment. They will advise a disembarking pilot of ice on the ladder and/or ice on the pilot boat deck. The deckhand assists the pilot with his or her bag, manages the lower end of the ladder, and at times lends a hand for stability.

At 05:30 on June 30, 2018, Maryland pilot Captain Brian Fierro was disembarking from the car carrier M/V Glovis Companion. While at the top of the ladder and grasping the right stanchion, it failed under his weight, resulting in a head-down fall of 20 feet. Deckhand Bob Cousins quickly moved below him and broke his fall, literally saving his life. With both men badly injured, Captain Allen Gouldthread, the boat operator, declared an emergency and sped towards the pilot station in Lynnhaven Inlet, where an ambulance had been directed by Earl Sutton, the watch stander in the pilot tower. Months of recovery lay ahead for these two men.

Imagine closing in on a ship at night, miles out to sea, on occasion in heavy weather. The pilot boat advances towards a ladder made of wooden rungs and rope suspended from the side of a ship. There is a cluster lamp shining down from the main deck. One's view from the boat is reduced to a small area of illumination down the side of the ship with a splash of light on the water below. But for the sound of the pilot boat's engines and the occasional crackle of the radios, the rest of the world is black. It's a very personal experience that is at times almost surreal. Those on board feel very connected to each other.

It's 04:00 and we are outbound at the Virginia Capes. I am being escorted along the main deck by the chief mate. My ten-hour journey down the Bay is finished, and I have handed back control of the ship's movements to the captain. After I leave, he will adjust the ship's course and speed for the next port of call. We reach an opening in the deck railing and I wish the crew gathered there a safe voyage. I turn and face them. With both hands on the railing I step back onto the top rung. The mate, keying his portable VHF, briskly reports to the captain on the bridge a phrase that I have heard thousands of times during my 41-year career: "Pilot on the ladder."



Some of the members that came to the club picnic on 8 October



Check out all the pizza we tried to eat. Everyone brought some home.

GRAFTON FISHING SUPPLY CLUB SPOT TOURNAMENT

For the spot tournament there were only two entries.

1st place: Aurora Badger - \$100

2nd Place: Ava Perez - \$40

Croaker figures were in last month's Chumline



Aurora Badger and here 1st place prizes for the biggest spot



Ava Perez & her prize for the second biggest spot



Aurora Badger and here 1st place prizes for the biggest spot



Taliya Veal with 2nd place croaker check



Cristiano Strickland with 3rd place croaker check

Last Month's Mystery Fish Black Scabbardfish



The black scabbardfish is bathypelagic by day, but moves upwards in the water column at night to feed at middle depths on crustaceans, cephalopods, and other fishes, mostly grenadiers, codlings (family Moridae) and naked heads (family Alepocephalidae). The black scabbardfish coexists spatially with *Aphanopus intermedius*, which is a species commonly known as the intermediate scabbardfish. The narrow, elongated body of the black scabbardfish, along with its pointed head and long dorsal fin, is adapted for fast swimming. This fish has a large terminal mouth with large fang-like teeth for efficient predation. To camouflage well, it has a coppery-black coloration with an iridescent tint. The fish's large eyes, which have a diameter around 18% of the head length, are of such a large size to facilitate sight in low light.

Black scabbardfish have 35 or more prey categories, including crustaceans, cephalopods, mesopelagic fish, shrimp, teleost fish, and blue whiting. Blue whiting may be a preferred prey; other mesopelagic fish are also preferred. When black scabbardfish are not feeding on these, they may chase after baitfish, feeding on *Sardina pilchardus*, *Scomber colias*, or squid.



Virginia Recreational Saltwater Fishing Regulations

*Last Revised
June 2023*



Atlantic Croaker

- Minimum Size Limit: No size limit
- Recreational Bag Limit: 50 per person; additional 50 live bait per customer capacity on for-hire or charter vessels



Spot

- Minimum Size Limit: No size limit
- Recreational Bag Limit: 50 per person; additional 50 live bait per customer capacity on for-hire or charter vessels



Kingfish

- Minimum Size Limit: No size limit
- Recreational Bag Limit: No bag limit



Grey Trout (Weakfish)

- Minimum Size Limit: 12 inches
- Recreational Bag Limit: 1 per person



Bluefish

- Minimum Size Limit: No size limit
- Recreational Bag Limit: 3 per person from shore or a rented or private vessel
- 5 per person on for-hire or charter vessels



Spanish Mackerel

- Minimum Size Limit: 14 inches
- Recreational Bag Limit: 15 per person



King Mackerel

- Minimum Size Limit: 27 inches
- Recreational Bag Limit: 3 per person



Cobia

- Minimum Size Limit: 40 inches
- Recreational Bag Limit: 1 per person or 2 per vessel, whichever is more restrictive. Only 1 fish per vessel may be greater than 50 inches total length.
- Season: June 15 - September 15
- Gaffing prohibited



Summer Flounder

- Minimum Size Limit: 16 inches
- Recreational Bag Limit: 4 per person



Striped Bass

Any person fishing striped bass recreationally shall use non-offset, corrodible, non-stainless steel circle hooks when fishing with bait.

Chesapeake Bay Spring Season

- Size Limit: 20-28 inches
- Recreational Bag Limit: 1 fish per person
- Season: May 16 - June 15

Chesapeake Bay Fall Season

- Size limit: 20-31 inches
- Recreational Bag Limit: 1 fish per person
- Season: October 4 - December 31

Coastal Season

- Size Limit: 28-31 inches
- Recreational Bag Limit: 1 per person
- Season: January 1 - March 31, May 16 - December 31

Select species provided for information purposes only. Not all regulated species are included. All regulations are subject to change. It is the angler's responsibility to know and abide by all current regulations and laws. Check for new regulations before you go fishing.
www.mrc.virginia.gov



Spadefish

- Minimum Size Limit: No size limit
- Recreational Bag Limit: 4 per person



Sheepshead

- Minimum Size Limit: No size limit
- Recreational Bag Limit: 4 per person



Black Sea Bass

- Minimum Size Limit: 13
- Recreational Bag Limit: 15
- Season: May 15 - July 6, August 9 - Dec. 31



Tautog

- Minimum Size Limit: 16 inches
- Recreational Bag Limit: 4 per person
- Season: January 1-May 15, July 1- Dec. 31



Speckled Trout

- Minimum Size Limit: 14 inches
- Recreational Bag Limit: 5 per person, only 1 greater than 24"



Red Drum

- Minimum Size Limit: 18 inches
- Maximum Size Limit: 26 inches
- Recreational Bag Limit: 3 per person



Black Drum

- Minimum Size Limit: 16 inches
- Recreational Bag Limit: 1 per person

PSWSFA SPONSORS

PSWSFA would like to thank our sponsors for their support

Wilcox
BAIT &
TACKLE
Newport News, VA

BILL EVERY
441 GRAFTON DRIVE
YORKTOWN, VA 23692
TEL: (757) 968-5423
WWW.ATLANTICMARINEVA.COM



Atlantic Marine Supply



ORIGINAL Mirrolure®

L&S Bait Company 1415 E Bay Dr, Largo, FL, 33771

Phone (727) 584-7691 www.shopmirrolure.com

SOUTHERN BAY
Yacht Sales

Capt. Michael Hanna, President
mhanna@southernbayyachtsales.com

757-810-7152

<https://www.southernbayyachtsales.com>

FAITH ~ FAMILY ~ BOATS



PSWSFA SPONSORS

PSWSFA would like to thank our sponsors for their support



MULTIPRINT
INCORPORATED

DESIGN • PRINT
SCREEN PRINT • EMBROIDERY
PROMOTIONAL ITEMS

(757) 244-6800
www.multiprintinc.com
orders@multiprintinc.com



Andrea's
Italian Restaurant & Pizzeria





FISH TALES



Donnie Fricks and Striper



Stan Svrlinga, fishing with Stan Simmerman, caught his personal best speck at 23.25"



Stan with a 25.5" citation speck



Aurora and a finny friend



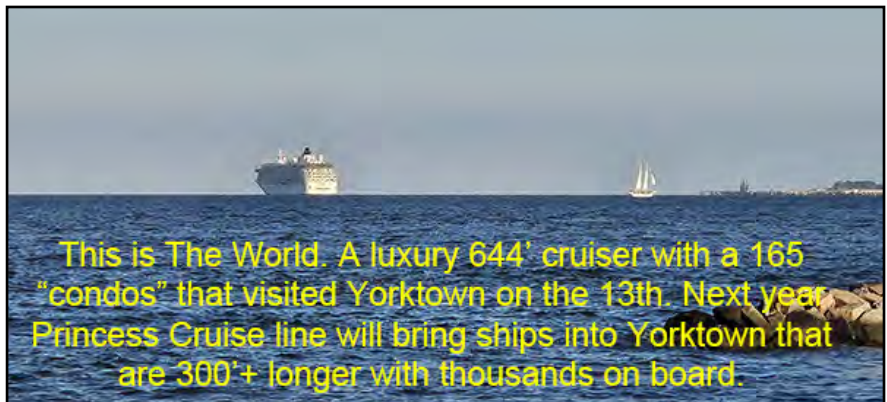
Ava is Spot on



Another monster speck for Stan



Mike's one and only keeper Speck



This is The World. A luxury 644' cruiser with a 165 "condos" that visited Yorktown on the 13th. Next year Princess Cruise line will bring ships into Yorktown that are 300'+ longer with thousands on board.

Monthly Tournament List August 2023

Sheepshead Glen Davenport	26"	Spot Christiano Strickland (Y)	8"
Black Belly Rose Fish Stan Simmerman	14"	Tautog Christiano Strickland (Y)	12.5"
Flounder Stan Simmerman	24"	Croaker Christiano Strickland (Y)	9.5"
Blue Line Tilefish Stan Simmerman	39"	Triggerfish Sean Downey (Y)	20"
Grouper Stan Simmerman	31"		
Amberjack Stan Simmerman	41"		
Wahoo Stan Simmerman	51"		
Speckled Trout Stan Simmerman	27.75"		
Bluefish Michael Hudgins	25"		
Cobia Chris Harris	56"		
Black Seabass Rick Wineman	19.5"		
Snapper Matt Waddel	33"		
Spanish Mackerel Sidney Hale	20"		

Monthly Tournament Contenders	
Species	Min Size
Albacore Tuna	35"
Amberjack	40"
Bigeye Tuna	40"
Black Drum	40"
Blackbelly Rosefish	14"
Blackfin Tuna	45"
Bluefin Tuna	45"
Bluefish	25"
Blueline Tilefish	20"
Blue Marlin	Release
Channel Bass - Drum	40"
Cobia	40"
Croaker	16"
Dolphin	35"
False Albacore	25"
Flounder	22"
Golden Tilefish	30"
Gray Trout	24"
Grouper	16"
Jack Crevalle	36"
King Mackerel	35"
Pompano	12"
Sailfish	Release
Sea Bass	15"
Shark	60"
Sheepshead	15"
Snapper	12"
Spadefish	18"
Spanish Mackerel	20"
Spearfish	Release
Speckled Trout	21"
Spot	8"
Striped Bass	36"
Swordfish	Release
Tarpon	Release
Tautog	18"
Triggerfish	15"
Wahoo	40"
White Marlin	Release
Whiting (Roundhead)	14"
Yellowfin Tuna	35"

Photo taken in 2017 by the Editor at the Hilton Waikoloa lagoon, Da Big Island, Hawaii

Bring your entries to Milton at our monthly meeting by 7:00 pm or send an email or snail mail to the address' on the left (Yellow Box). Please direct any questions to Milton.

MAIL ENTRY FORMS TO:
MR. MILTON HUDGINS
1894 KATIE LANE
HAYES, VA 23072
(e-mail: judygee03@gmail.com)

Deadline for turning in your 2023 entry forms:

Month of Entry	Deadline (RegMtg)	Month	Deadline (Reg Mtg)
January	15 Feb	July	15 Aug
February	15 Mar	August	19 Sep
March	19 Apr	September	17 Oct
April	17 May	October	21 Nov
May	20 Jun	November	19 Dec
June	18 Jul	December	by Brd Mtg 9 Jan 2024



PLEASE HAND DELIVER TO MONTHLY MEETING or MAIL TO:
PSWSFA, P.O. Box 5194, Newport News, VA 23605

OFFICIAL ENTRY FORM

Eligible Species

Amberjack	40"	Pompano	12"
Albacore Tuna	35"	Sea Bass	15"
Big Eye Tuna	40"	Sailfish	Release
Black Belly Rose Fish	14"	Shark	60"
Black Drum	40"	Sheepshead	15"
Black Fin Tuna	20"	Snapper	12"
Blue Fin Tuna	45"	Spadefish	18"
Bluefish	25"	Spanish Mackerel	20"
Blueline Tilefish	20"	Spearfish	Release
Blue Marlin	Release	Speckled Trout	21"
Channel Bass	40"	Spot	8"
Cobia	40"	Striped Bass	36"
Croaker	16"	Swordfish	Release
Dolphin	35"	Tarpon	Release
False Albacore	25"	Tautog	18"
Flounder	22"	Triggerfish	15"
Golden Tilefish	30"	Wahoo	40"
Gray Trout	24"	White Marlin	Release
Grouper	16"	Whiting (Roundhead)	14"
Jack Crevalle	36"	Yellowfin Tuna	35"
King Mackerel	35"		

I HEREBY CERTIFY THAT THE FOLLOWING STATEMENTS ARE THE TRUTH, AND THE RULES OF THIS CONTEST HAVE BEEN COMPLIED WITH (see back of this sheet)

Required Information:

Tournament _____ Fish: _____

Date Caught: _____ Time Caught: _____ am/pm Length: _____

Name (printed): _____ Adult Youth

Signature: _____ Witness Signature: _____

Optional Information:

Weight: _____ Where Caught: _____

Weight Master Signature: _____



2023 PSWSFA TOURNAMENTS

Download "Official Entry Form" at

[Monthly Tournament - Peninsula Salt Water Sport Fisherman's Association \(pswsfa.com\)](https://pswsfa.com)



FOR ALL TOURNAMENTS

You must register prior to fishing and use the PSWSFA official monthly entry form

Questions Contact: Tournament Director Rick Wineman: rick@getanetsportfishing.com or 757-268-1539

Bishop's Trophy Red Drum Tournament

April 1st – May 31st, 2023

Must Receive Completed Form no later than the Board Mtg.
June 13, 2023

See Rules below for Catch and Release fish totals.
(Witness or photo)

Club Multiple Species Tournament

June 1st – 30th, 2023

Angler who catches the most saltwater species
in a single day

Must Receive Completed Forms no later than the
Board Mtg. July 11, 2023

Youth and Ladies

Croaker/Spanish Mackerel Tournament

July 1st -31st, 2023

Free Tournament for Lady and Youth members/Guests
(Do not need to register to participate)

Must Receive Completed Entry Forms no later than the
Board Mtg. August 8, 2023

Don Forman

Club Cobia Tournament sponsored by Bishop Fishing Supply

August 1st -31st, 2023

Must Receive Completed Form no later than
the Board Mtg. Sept. 12, 2023.

See Rules below for weight tournament

Sheepshead Tournament

August 5, 2023

Separate paid entry tournament. Details and rules to be
announced. Rules and fees listed below do not apply to this
tournament.

Go to www.PSWSFA.com

For Entry Forms and fees etc.

Grafton Fishing Supply

Club Spot Tournament

September 16th – 17th, 2023

Weigh in: 2:00pm Sept. 17th at (Location to be
determined)

All entries will be weighed using the same club scale
followed by the Annual Club Picnic

Spot Tournament - Two categories with 1st – 3rd place
winners:

"ADULT ENTRIES" and "YOUTH ENTRIES"

(Anglers for the Spot Tournament must be present to win)

RSVP by Sept. 15th if you are coming to the Annual Club
Picnic to the Tournament Director

Club Puppy Drum Tournament

October 1st – 31st, 2023

Most number of Spots Wins (photos required)

Must Receive Completed Forms and copies of photos
no later than the Board Mtg. Nov 14, 2023

Wilcox Bait and Tackle

Irv Fenton Rockfish Tournament

December 1st -31st, 2023

Must Receive Completed Form no later than Jan. 9, 2024
See Rules below for weight tournament

MAIL ENTRY FORMS TO: MR. MILTON HUDGINS, 1894 KATIE LANE, HAYES, VA 23072 (e-mail: judyqee03@gmail.com)

ALL Club Tournaments (Except as noted on front):

- Entry Fees: \$20 for member & \$30 for non-member. Youth and Ladies croaker/Spanish mackerel tourney is free.
- Rules and Entry Fees listed below do not apply to the Sheepshead Tournament. This is a sperate paid entry tournament.
- You must register before fishing by e-mailing Rick Wineman: rick@getanetsportfishing.com or call 757-268-1539.
- Leaving a message will be sufficient to register, give all anglers names (specify club members and club guest), and also give a phone number.
- Guest(s) must fish with at least one member on boat/shore/pier/kayak
- Use a club "Official Entry Form" and weigh in fish at any Va. Saltwater Tournament official weigh station for weight tournaments. Record the weight of fish, date and time caught and have the weigh master sign the form to verify catch. If two identical fish are caught on the same day, the earlier fish wins. That is why time is so important. Length tournament entries require witness or photo.
- All pertinent PSWSFA bylaws apply.

**To register or ask questions, e-mail Rick Wineman, Tournament Director
at rick@getanetsportfishing.com or call Rick @ 757-268-1539**

MEASURING INSTRUCTIONS

With the fish lying on a flat surface, measure in quarter inch increments, from the tip of the mouth to the tip of the tail with the fish in a natural position and the mouth closed.



www.pswsfa.com



Fishing Around the World



Recreational fishing in Morocco is popular, with many tourists visiting the country specifically to fish. The most popular areas for recreational fishing include Essaouira, Agadir, and Tanger. These locations offer a variety of fishing opportunities, including deep sea fishing, inshore fishing, and fly fishing.

Deep sea fishing in Morocco is a popular activity, with a wide variety of big game fish species found in the waters off the coast. These include tuna, swordfish, marlin, Mahi, and shark. Many deep sea fishing charters operate out of Essaouira and Agadir, offering anglers the chance to catch these magnificent fish. Inshore fishing is also popular, with a wide range of species found in the waters close to the shore. These include sardines, mackerel, and sea bass.

Fly fishing is also a popular activity in Morocco, with many anglers visiting the country specifically to fish for sea trout. The most popular fly fishing destinations in Morocco include Tanger, Asilah, and Oualidia. These locations offer a variety of fishing opportunities, including saltwater fly fishing for sea trout and freshwater fly fishing for brown trout.

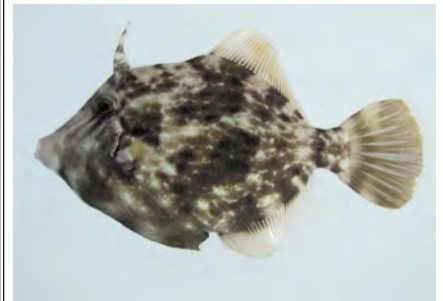
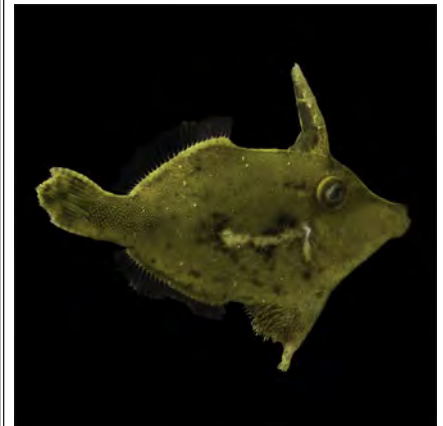
Overall, fishing in Morocco offers a unique and exciting experience for anglers of all levels of experience. Whether you're a seasoned angler or a beginner, there are plenty of opportunities to catch a wide variety of fish species. Whether you're interested in deep sea fishing, inshore fishing, or fly fishing, Morocco has something to offer. With its beautiful coastline, warm waters, and diverse range of fish species, Morocco is definitely a destination worth considering for your next fishing trip.



Caught from the cliffs in Morocco

So you think you know your Fish

These are different varieties of the same type of fish.





As a member of Peninsula Salt Water Sport Fisherman's Association
a BoatU.S. Cooperating Group, you are invited to become a BoatU.S. Member
at a special rate:

\$15 Boat U.S. Membership Dues and 10% off Water Towing Services

BOAT U.S. COOP GROUP #: Contact Gary Donaldson at
GaryD66@Cox.Net
For the PSWSFA Coop group #

NEW MEMBERS

Sign up online at BoatUS.com/Join
(enter your BoatU.S. Coop Group #
on the first page of the application)

CURRENT MEMBERS

Not receiving the discount? Email
Membership@BoatUS.com

MEMBERSHIP BENEFITS INCLUDE:

- 24/7 Dispatch to over 600 towboats in 300+ ports nationwide
- Marine insurance for boaters with 24/7 claims service
- Discounts on fuel, slips, repairs & more at over 1,200 boating businesses nationwide
- Subscription to *BoatU.S. Magazine* – 6 issues per year

Visit BoatUS.com/Membership to learn about all benefits
and services offered to BoatU.S. Members.

BoatU.S. 811



INSURANCE



DISPATCH



MAGAZINE



SAFETY



ASSOCIATION



TOWING



TRAILER ASSIST



DISCOUNTS



ANNUAL *Fishing Flea Market*

MAJOR
SUPPORTERS



March 2, 2024
8:00 am - 2:30 pm

VIRGINIA BEACH FIELD HOUSE

Free Raffles!

50/50

Best Locations Go Fast. Register Now!

Come buy, meet, greet, and eat !!

- New & Used Rod & Reels
- Fresh & Saltwater Gear
- Custom Lures
- A Variety of Boats & Trailers
- Hot Food & Cold Refreshments
- Admission \$5 (Children 12 & Under Are Free)
- **FREE PARKING**
Over 3,000 customers in the past year

NEW LOCATION!

Virginia Beach Field House
2020 Landstown Centre Wy,
Virginia Beach, VA 23456

**NEW
LOCATION!**

Butch - tbpocan@aol.com 757-287-0330
George - geva1963@cox.net 757-421-7333
Lavern - rv2mnts@gmail.com 757-974-3090

You are invited to visit or join the best fishing club in Tidewater. Each month the club has a speaker to present an informative program on various local fishing topics. Check us out at www.fishgbfa.org

Or Visit facebook.com/GreatBridgeFishermansAssociation

- Monthly Newsletter • Annual Awards Banquet
- Fishing Tournaments (Boat & Surf) • Special Events such as Oyster Roasts & Picnics
- Philanthropic Events to Benefit Organizations such as Hope House and Wish-A-Fish
- 12 High School Scholarships Presented in 2023

Directions to PSWSFA Meeting

**Former St Mark's Episcopal Church
Now used by Peninsula Baptist Church**

From 64 (either direction) take the Mercury Blvd exit towards the James River Bridge (West) stay in the right hand lane and turn right at the light onto Todds Lane. Go past Zaxby's chicken about 400 ft and the driveway to the church is on the right. The original St, Mark's sign is still on the lawn just short of the driveway with a new Baptist church message.

If you come to the traffic light at the intersection of Cunningham you went to far. Turn right on Cunningham and look for the Cunningham entrance to the church (500ft). If you miss it you will need to do a U-turn on Cunningham and go left onto Todds Lane.

The church driveway is just short of the Bercuese Funeral home entrance or just after it if coming from Cunningham.

WHAT'S UP NEXT & BEYOND



17 October 2023 - Regular Meeting 1900hrs



21 November - Last Regular Meeting of 2023



2-4 Feb - Mid Atlantic Sports & Boat Show
Virginia Beach Convention Center



2 March - Great Bridge Fishing Flea Market



19 March - First meeting of 2024

PENINSULA SALT WATER SPORTS FISHERMAN'S ASSOC.
P.O. Box 5194
NEWPORT NEWS, VA 23605

