



The PSWSFA is a family-oriented fishing club established in 1957. Our meetings are held on the 3rd Tuesday of each month (March-Dec.) at 7:00pm. The meetings are free and open to the public and are a great place to swap stories with other local fishermen, find new fishing partners and plan trips together. We have raffles with nice giveaways-donated by local businesses plus prizes we buy ourselves. Each month we have speakers sharing their experience on one of the local fisheries. Come join us and get to know some of the other fishermen in your local area. Directions on last page. You can visit us at www.pswsfa.com.

Next Meeting
15 Aug 2023 7:00pm (1900)
see last page for directions

The PSWSFA's 1st Annual Sheepshead tournament went off great with 20 boats entered and 11 Sponsors. We are looking forward to preparing for our 2nd annual event next year. Our plans are to start prepping for the event much sooner and getting more sponsors and participants to build this into a much bigger event year after year. A lot of very nice Sheepshead were weighed in this year and we look forward to many more in the years to come.

Please see page 3 for all the facts, figures and pictures.

Also, the president's news is on Page four.

We'd like to thank Randy Pack for speaking to the club in July about their plans for the Ft Monroe marina. Things will be very different but a lot better once completed.

Our August speaker is a representative from the Health Department who will speak about Vibrio or Fish Handlers Disease. This is a must see for all fisherman!

Stay well
Mike the Editor

PSWSFA 1ST ANNUAL SHEEPSHEAD TOURNAMENT SPONSORS

GOLD SPONSORS



SILVER SPONSORS



BRONZE SPONSORS



2022 Club Officers

Stan Simmerman

President

Milton Hudgins

Vice President

Wally Veal

Secretary

Christina Grice

Treasurer

Danny Forehand

Past President

Board of Directors

John Hunt Jr.

Ronnie Wilson

Gary Donaldson

Dailey Vandergriff

Rick Wineman

Charles Randolph

Jenny Williamson

David Agee

Mike Frielingsdorf

Richie Moore

Paul Downey

Johnny Boyd

Gerald Abrams (alt)

**A young buck visiting us
at our Hampton meeting**



Attention all members: This is a reminder that all memberships will now expire on the last day of February of each year. Forms are available from Johnny Boyd (membership committee). At the December 2019 board meeting the board voted to increase the dues by \$10. As before, the \$40 is per individual or family. We haven't had a dues increase in pretty much forever and this will help the club pay for the increased cost of our meeting space as well as supporting events like the picnic, awards banquet, and fishing related events, organizations, and tournaments.

PSWSFA 2023 MEMBERSHIP

Dues: \$40 per year for entire family*
(March through February - not prorated throughout the year)

Name: _____ Spouse: _____

Dependents Names and ages

1) _____ 4) _____

2) _____ 5) _____

3) _____ 6) _____

*Family must be living with you

Address: _____

City: _____ State: _____ Zip: _____ Home Phone: _____

E-Mail: _____ Cell Phone: _____

Boat Name/Call Sign: _____

Total number in your membership: _____

Send this form with a check (payable to PSWSFA) to:

PSWSFA
P.O. Box 5194
Newport News, VA 23605

Please check one of the following:

☐ Yes, please add my name to the club membership book
☐ No, please do not publish my information

PSWSFA 1ST ANNUAL SHEEPSHEAD TOURNAMENT

The 1st Annual Sheepshead Tournament is in the books. Thanks to all our sponsors and all the anglers who came out to fish and support the club.

1st Place "Tighten Up" Captain Hunter Watson with a 13.40 lb. fish \$1000.00 plus \$1350.00 in calcutta earnings.

2nd Place "Last Cast" Captain Alexander Crittenden with a 13.15 lb. fish \$600.00

3rd Place "Team Rawlings" Captain Brandon Rawlings with a 12.9 lb. fish \$400.00

Thanks to all our club volunteers for making this inaugural event a success. We couldn't have done it without you.

Special thanks to Wallace's Bait and Tackle for hosting the tournament. A 1st class venue for the event.

Looking forward to next year.....



FROM THE PRESIDENT

The meeting attendance continues to be very good. The topic for the August meeting will be "Fish Handler's Disease (Vibrio)". The presentation will be from the Hampton Department of Health and is a topic that we all need to be aware of. This is especially true as we are in the hottest time of the year and the vibrio bacteria is especially prevalent this time of year. When we had this topic several years ago the meeting was packed with visitors from as far away as Winchester, VA. I encourage every member of the club to attend and to invite your friends and family members who fish or spend time in and on the water. There is something for all of us to learn about this life-threatening issue.

The Sheephead Tournament was a success. If the weather had cooperated, I'm sure that we would have had more boat entries, but we did achieve our minimum goal of twenty boats. The top three winners were quality fish between 13.4 and 12.9lbs. Feedback has been positive from the folks who entered and fished the event. Charles Randall, Wally Veal, Christina Grice, Richie Moore, Dailey Vandergriff and the rest of the tournament committee deserve credit for a job well done and I want to personally thank them and the others who were instrumental in pulling this off. Thanks also goes to Wallace's Bait and Tackle for their support hosting us at their

facility. I also wish to thank all of our sponsors who made this tournament possible. I encourage you all to visit and support those sponsors.

As I stated last month all of the summer species are here. Flounder fishing is better than it has been in many years. There have now been a few king mackerel caught and also some tarpon encounters. Specks have showed up finally, and there are some big fish available. Sharks are everywhere including places where you don't normally expect them. Offshore seems to be picking up with tuna, mahi, and swords being caught.

I hope to see all of you at the August meeting and again bring a guest with you to the meeting. Get out there and fish and try to get a youngster/youngsters out there fishing with you. Enter your fish in the monthly tournament and especially the youth entries. I look forward to seeing you at the meeting.

Tight Lines,
Stan



Electric Motor Company Attempts Chesapeake-To-Miami Endurance Record

If someone told you that a pair of electric outboard motors had the range to carry you on a 1,000-nautical-mile journey down the Atlantic coast, would you believe it?

Last week, a three-person crew from electric outboard maker **Vision Marine Technologies** departed from Electrified Marina in Norfolk aboard a 23' Zenith pontoon boat. It's equipped with a 3 kW solar array on its canopy, twin banks of lithium batteries in parallel, and twin electric outboard motors. They are well underway on an epic, 1,050 nautical mile voyage they're calling the **Amped Up Distance Challenge**.



This expedition shows off the long-range capabilities of sustainable electric power, as Vision's team navigates from the lower Chesapeake to Miami, Florida. Their mission is to demonstrate the potential of clean, efficient electric boating technology. The tentative itinerary, built around 20-50-nm daily runs, includes stops at several Vision Marine Technology dealerships and partnering marinas along the **Atlantic Intracoastal Waterway**. It gives us a good look at a recreational application for electric marine power, whether for an odyssey like this or simply a relaxing day on the water.

Crew for the Amped Up Distance Challenge include a couple of experienced cruising sailors, Francois Legare (Captain) and Sylvie Latendresse (Navigator), assisted by Vincent Prevost, Brand & Communication Director at Vision Marine Technologies. When we caught up with the crew Tuesday afternoon, they were in Oriental, North Carolina, headed for Morehead City Wednesday.

So far, the weather and the bugs have provided some challenges to the crew. Most nights, they sleep ashore with the boat plugged into pier power. They did spend a night aboard in the Dismal Swamp Canal, where they met a large population of nocturnal insects.

Plugging in the battery bank alone gives the pontoon a range of 50-60 miles traveling at 5-6 knots. If the day is sunny, the boat can run on the solar array alone. Learning to observe and manage energy well is key.

Vision Marine Technologies, based in Quebec, has previously laid down a powerful marker for the marine industry with its **180-hp Emotion 180E outboard**, which comes as a complete power system with lithium batteries, an inverter, and an integrated control system. With twin 180Es installed on a 32' HellKat catamaran, the system has set the current on-water speed record for electric power, 109 mph on Missouri's Lake of the Ozarks. The company is also working with Groupe Beneteau and The Limestone Boat Company to pair the E-Motion 180E with models like the Four Winns H2E.

The company also offers a range of smaller 15'6" – 21'7" boats with simpler power packages for quiet, leisurely, 5-to-6-knot exploration of creeks, rivers, and harbors. It is these boats that **Electrified Marina** offers for rent on Norfolk's Lafayette River, and the Amped Up pontoon boat runs a pair of similar motors. The custom battery bank can power the boat for a full 12 hours (a 50-60-mile range), and even more on sunny days in the open waters of the ICW, when the overhead solar array supplements the batteries. (The Dismal Swamp Canal was not so kind to the solar array over the weekend, with its long overhead canopy of trees and a hard rainstorm.)

Read more about the Challenge here. Prevost is documenting the trip online and on social media with text, photos, and videos. You can track the Amped Up boat and crew on the **Vision Marine Technologies Facebook** page.

-John Page Williams

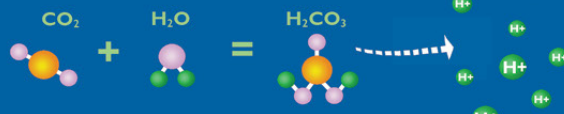
Ocean Acidification and Coastal Fisheries

A Look into the Future

Over the past 200 years, our ocean waters have become 30% more acidic. This rate of change is 10 times faster than during the past 50 million years.

What is Ocean Acidification?

The ocean helps regulate Earth's climate, absorbing 30% of the carbon dioxide (CO₂) released when we drive our cars and power our homes. Beneath the surface, CO₂ reacts with water to form an acid, a process called Ocean Acidification (OA).

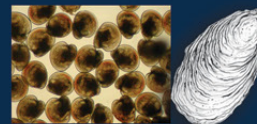


Some of the CO₂ combines with water to form carbonic acid. Excess hydrogen ions make the ocean more acidic.

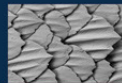
How does Acidification impact our local finfish and shellfish?



Oysters and Hard Clams need minerals from the ocean to build strong, healthy shells. In more acidic waters, the minerals become scarce. Weaker shells are less resistant to predation and disease. Larval shells are smaller and more irregular under high CO₂ conditions.



Sharks Acidic waters can corrode the denticles in some species of sharks, making their skin more prone to infection and changing how they swim through the water.



Summer Flounder

Fewer eggs survive to hatching in more acidic waters (high CO₂ conditions).



Atlantic Silversides

An important baitfish in the Mid-Atlantic, their larval stages grow more slowly in more acidic waters (high CO₂ conditions).



OUTLOOK

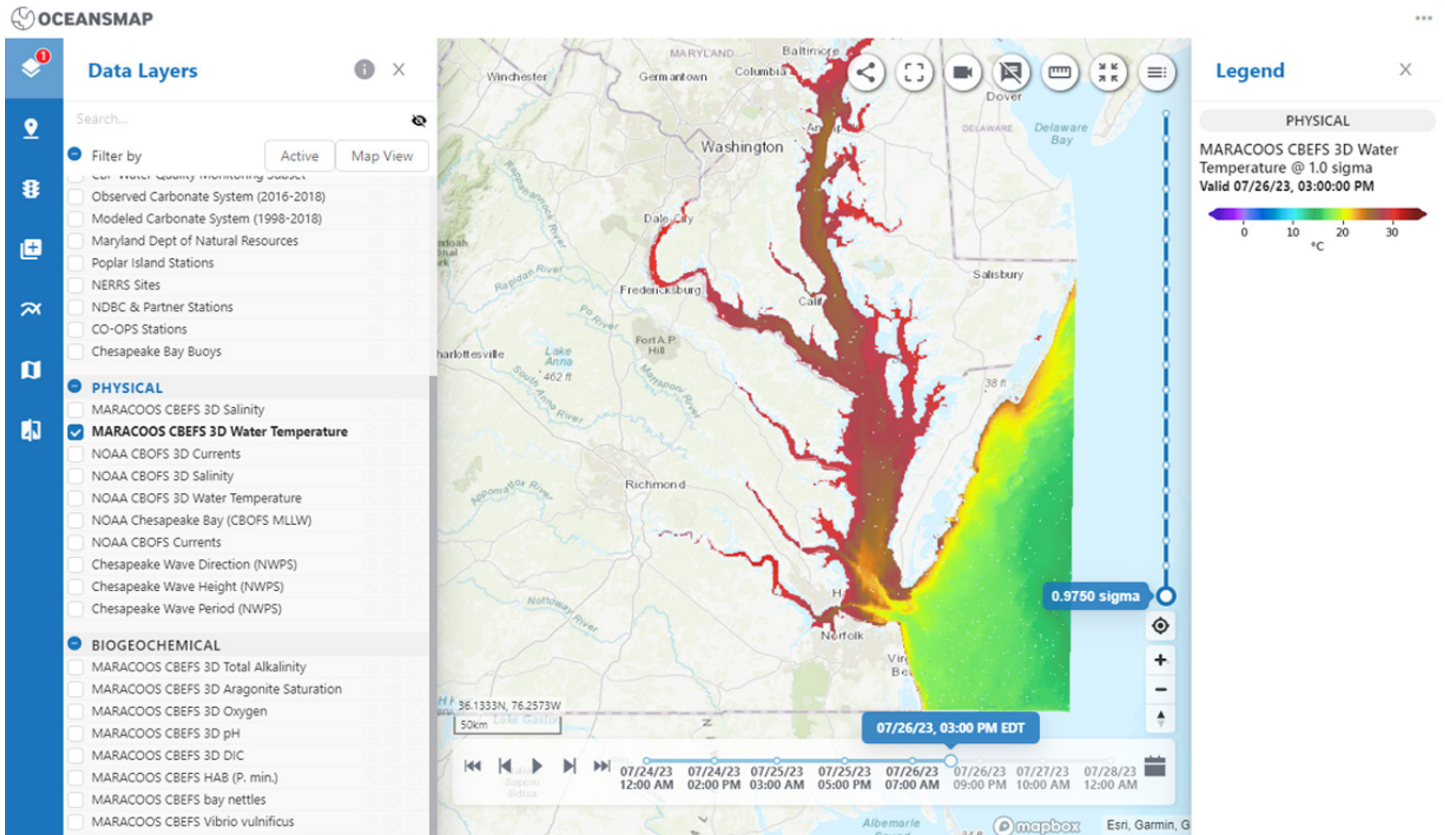
Ocean Acidification, in combination with warming ocean waters and more frequent low oxygen conditions can impact the growth, reproduction, and survival of our local fish and shellfish. Together, these changing ocean conditions will likely make our local fish more vulnerable to acidification in the future.

What can You do to help?

- Talk about it! Teach your friends and family about acidification and how they can help.
- Get involved in a local water quality monitoring program or habitat restoration project.
- Use less fertilizer on your lawn to reduce nutrient runoff that can lead to acidification.
- Save Electricity: Switch to LED light bulbs or Energy Star appliances.



Scan here to learn more about OA, or visit MidAcan.org



MARACOOS (Mid-Atlantic Regional Association Coastal Ocean Observing System) is pleased to announce the launch of a major upgrade to the [Chesapeake Bay Portal OceansMap!](https://oceansmap.maracoos.org/chesapeake-bay/) Not only does this upgrade improve the overall appearance and user interface, but the Portal (powered by RPS) will now provide users with new and improved analytical tools, customizable features, and a smooth, enhanced backend that provides streamlined access to data and visualizations. Highlight your favorite fishing spots and choose your most important data features using the permalink tool, assess go/no-go situations with the Traffic Light tool, or compare multiple datasets using Compare Mode. **Check out the Chesapeake Bay Portal OceansMap here:** <https://oceansmap.maracoos.org/chesapeake-bay/>. If you have any feedback or would like to request a demo, please reach out to info@maracoos.org

50 Years, 50 Model Ships: Newport News Exhibition Opens In August

They may be the most patient people on Virginia's waterfront. The Hampton Roads Ship Model Society is celebrating its 50th anniversary, and the Mariners' Museum and Park in Newport News is opening a new exhibition to honor them.

Members of the Ship Model Society have been building painstaking, intricate models since 1967. The new exhibition will showcase more than 50 models created over the 50 years since the society formed. The ships range from military craft, pleasure boats, and historical ships like USS Monitor and CSS Virginia.

Gene Berger, the group's president, said, "This exhibit represents a lifetime of effort by a group of modelers whose meticulous workmanship would otherwise go unappreciated."

The exhibition opens Saturday, August 5 and will run through February 11, 2018. For more information about the exhibition, visit MarinersMuseum.org/ShipModel50.

MULTI-SPECIES TOURNAMENT WINNERS

The 2023 PSWSFA Multiple Species Tournament was held from June 1, 2023 to June 30, 2023. The angler who catches the most saltwater species in a single day wins. We had three club members participate and two entries.

1st Place - Richie Moore wins a \$60 check from PSWSFA with the following fish caught on June 30th:

- 1 - Perch
- 2 - Black Seabass
- 3 - Flounder
- 4 - Bluefish
- 5 - Sea Mullet
- 6 - Gray Trout
- 7 - Unk Mullet
- 8 - Croaker
- 9 - Oyster Toad

2nd Place - Dave Wineman with the following fish caught on June 25th at York Spit:

- 1 - Roundhead
- 2 - Cobia
- 3 - Bluefish
- 4 - Houndfish

We would like to thank our Sheepshead Tournament sponsors for their support of PSWSFA. We couldn't have made this a success without them.



Randy Pack updated us on their plans to rejuvenate and improve the Fort Monroe Marina area.

Last Month's Mystery Fish European Sea Bass



The European seabass (*Dicentrarchus labrax*), also known as the European bass, sea bass, common bass, white bass, capemouth, white salmon, sea perch, white mullet or sea dace, is a primarily ocean-going fish native to the waters off Europe's western and southern and Africa's northern coasts, though it can also be found in shallow coastal waters and river mouths during the summer months and late autumn. It is one of only six species in its family, Moronidae, collectively called the temperate basses.

European seabass habitats include estuaries, lagoons, coastal waters, and rivers. It is found in a large part of the eastern Atlantic Ocean, from southern Norway to Senegal. It can also be found in the entire Mediterranean Sea and in the southern Black Sea but is absent from the Baltic sea. It has entered the Red Sea through the Suez Canal as an anti-Lessepsian migrant. It is a seasonally migratory species, moving further winter spawning grounds during at least one month before moving towards their summer feeding areas.



Select Recreational Fishing Regulations

February 2023



Atlantic Croaker

- Minimum Size Limit: No size limit
- Recreational Bag Limit: 50 per person; additional 50 live bait per customer capacity on for-hire or charter vessels



Spot

- Minimum Size Limit: No size limit
- Recreational Bag Limit: 50 per person; additional 50 live bait per customer capacity on for-hire or charter vessels



Kingfish

- Minimum Size Limit: No size limit
- Recreational Bag Limit: No bag limit



Grey Trout (Weakfish)

- Minimum Size Limit: 12 inches
- Recreational Bag Limit: 1 per person



Bluefish

- Minimum Size Limit: No size limit
- Recreational Bag Limit: 3 per person from shore or a rented or private vessel 5 per person on for-hire or charter vessels



Spanish Mackerel

- Minimum Size Limit: 14 inches
- Recreational Bag Limit: 15 per person



King Mackerel

- Minimum Size Limit: 27 inches
- Recreational Bag Limit: 3 per person



Cobia

- Minimum Size Limit: 40 inches
- Recreational Bag Limit: 1 per person or 2 per vessel, whichever is more restrictive. Only 1 fish per vessel may be greater than 50 inches total length.
- Season: June 15 - September 15



Summer Flounder

- Minimum Size Limit: 16 inches
- Recreational Bag Limit: 4 per person



Striped Bass

Any person fishing striped bass recreationally shall use non-offset, corrosion-resistant, non-stainless steel circle hooks when fishing with bait.

Chesapeake Bay Spring Season

- Size Limit: 20-28 inches
- Recreational Bag Limit: 1 fish per person
- Season: May 16 - June 15

Chesapeake Bay Fall Season

- Size limit: 20-36 inches
- Recreational Bag Limit: 1 fish per person
- Season: October 4 - December 31

Coastal Season

- Size Limit: 28-36 inches
- Recreational Bag Limit: 1 per person
- Season: January 1 - March 31, May 16 - December 31

Select species provided for information purposes only. Not all regulated species are included. All regulations are subject to change. It is the angler's responsibility to know and abide by all current regulations and laws. Check for new regulations before you go fishing.
www.mrc.virginia.gov



Spadefish

- Minimum Size Limit: No size limit
- Recreational Bag Limit: 4 per person



Sheepshead

- Minimum Size Limit: No size limit
- Recreational Bag Limit: 4 per person



Black Sea Bass

- Minimum Size Limit: 13
- Recreational Bag Limit: 15
- Season: February 1-28 (Permit Required), May 15-December 11*
- *Season to be finalized in April



Tautog

- Minimum Size Limit: 16 inches
- Recreational Bag Limit: 4 per person
- Season: January 1-May 15, July 1- Dec. 31



Speckled Trout

- Minimum Size Limit: 14 inches
- Recreational Bag Limit: 5 per person, only 1 greater than 24"



Red Drum

- Minimum Size Limit: 18 inches
- Maximum Size Limit: 26 inches
- Recreational Bag Limit: 3 per person



Black Drum

- Minimum Size Limit: 16 inches
- Recreational Bag Limit: 1 per person

PSWSFA SPONSORS

PSWSFA would like to thank our sponsors for their support

Wilcox
BAIT &
TACKLE
Newport News, VA

BILL EVERY
441 GRAFTON DRIVE
YORKTOWN, VA 23692
TEL: (757) 968-5423
WWW.ATLANTICMARINEVA.COM



Atlantic Marine Supply



ORIGINAL
MirrOlure®

L&S Bait Company 1415 E Bay Dr, Largo, FL, 33771

Phone (727) 584-7691 www.shopmirrolure.com

SOUTHERN BAY
Yacht Sales

Capt. Michael Hanna, President
mhanna@southernbayyachtsales.com

757-810-7152

<https://www.southernbayyachtsales.com>

FAITH ~ FAMILY ~ BOATS



Andrea's
Italian Restaurant & Pizzeria



STERLING MARINE

PSWSFA SPONSORS

PSWSFA would like to thank our sponsors for their support



MULTIPRINT
INCORPORATED

DESIGN • PRINT
SCREEN PRINT • EMBROIDERY
PROMOTIONAL ITEMS

(757) 244-6800
www.multiprintinc.com
orders@multiprintinc.com

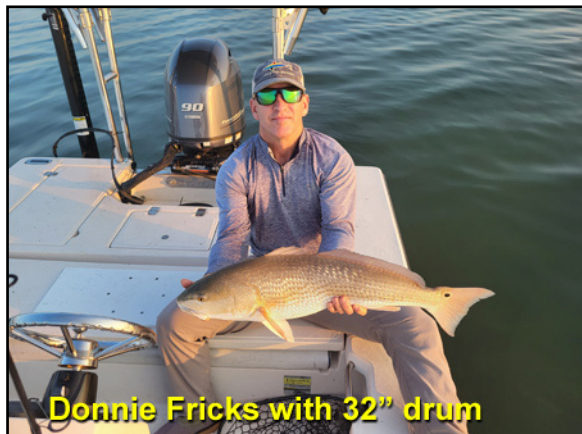


LEGASEA
M A R I N E





FISH TALES



Donnie Fricks with 32" drum



23" Spanish Mackerel caught by Michael Hudgins in Chesapeake Bay back of Gwynn's Island.



Danny Taylor with nice flounder



Wally Veal and 24" citation Speck



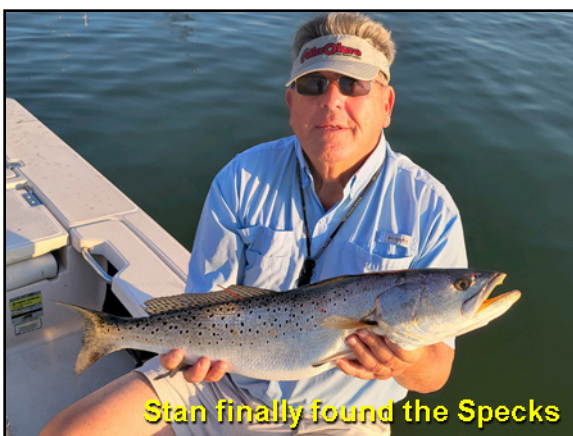
PSWSFA keeping track of the weights



An early weigh in.



Captains signing in



Stan finally found the Specks

**The Center for Conservation Biology
William & Mary**

Advancing conservation through science

The Center for Conservation Biology documents unprecedented osprey nest failures within the lower Chesapeake Bay

Williamsburg, VA – In 2023, The Center for Conservation Biology has documented the highest rate of osprey nest failure ever recorded within the lower Chesapeake Bay. Only 17 of 167 nests monitored during the season produced any young. The nesting population produced only 21 young resulting in a reproductive rate of 0.13 young per pair. This rate is below that recorded during the height of the DDT era. In order for the population to sustain itself, pairs should produce 1.15 young per pair.

The poor reproductive performance documented during 2023 is a trend that has been observed for the past fifteen years. In Mobjack Bay, productivity peaked during the 1980s and has declined to the present day. Researchers within The Center believe that the ongoing decline in young production is driven by overharvest of Atlantic menhaden. Forage fish such as menhaden, anchovy, sardine, capelin and herring play significant roles in marine ecosystems throughout the world. These small schooling fish are responsible for transferring energy from plankton to higher-level predators such as osprey. When forage fish are overharvested the marine food web is broken and higher-level predators suffer.

Within Mobjack Bay young osprey are starving in nests because the decades long overharvest of menhaden has caused local depletion. Within osprey pairs, males are responsible for hunting and providing fish to broods. Between 1985 and 2021 the rate of menhaden captures by male osprey declined from 2.4 fish per 10 hours to only 0.4 fish per 10 hours, a decline of more than 80%. Although osprey do feed on other fish species within the lower Chesapeake Bay none of these species offer comparable nutrient content. Atlantic menhaden is the keystone species that osprey depend on during the nesting season.

An experimental study conducted by Center biologists during the 2021 nesting season supplemented diets of osprey broods by providing menhaden and demonstrated that reproductive rates could be driven back to sustainable levels. On a broad scale, recovery of reproductive rates will require the restoration of menhaden stocks. Menhaden harvest policy has become a political mine field with special interests on all sides. Osprey within the lower Bay are increasingly demonstrating that our choices about harvest policy are having consequences for the broader Chesapeake Bay ecosystem.

Contact:

Dr. Bryan D. Watts, Director
The Center for Conservation Biology
William & Mary
bdwatt@wm.edu
(757) 221-2247

Monthly Tournament List

June 2023

Sheepshead
Stan Simmerman 24.5"

Red Drum
Chris Harris 45"

Grouper
Dick Harris 34"

Spanish Mackerel
Michael Hudgins 20.75"

Yellow Fin Tuna
John Hunt Jr. 49"

Spadefish
Johnny Boyd 20"

Cobia
Wally Veal 52.5"

Smooth Puffer (Critter)
Morgan Simmerman

Monthly Tournament Contenders	
Species	Min Size
Albacore Tuna	35"
Amberjack	40"
Bigeye Tuna	40"
Black Drum	40"
Blackbelly Rosefish	14"
Blackfin Tuna	45"
Bluefin Tuna	45"
Bluefish	25"
Blueline Tilefish	20"
Blue Marlin	Release
Channel Bass - Drum	40"
Cobia	40"
Croaker	16"
Dolphin	35"
False Albacore	25"
Flounder	22"
Golden Tilefish	30"
Gray Trout	24"
Grouper	16"
Jack Crevalle	36"
King Mackerel	35"
Pompano	12"
Sailfish	Release
Sea Bass	15"
Shark	60"
Sheepshead	15"
Snapper	12"
Spadefish	18"
Spanish Mackerel	20"
Spearfish	Release
Speckled Trout	21"
Spot	8"
Striped Bass	36"
Swordfish	Release
Tarpon	Release
Tautog	18"
Triggerfish	15"
Wahoo	40"
White Marlin	Release
Whiting (Roundhead)	14"
Yellowfin Tuna	35"

Photo taken in 2017 by the Editor at the Hilton Waikoloa lagoon, Da Big Island, Hawaii

Bring your entries to Milton at our monthly meeting by 7:00 pm or send an email or snail mail to the address' on the left (Yellow Box). Please direct any questions to Milton.

MAIL ENTRY FORMS TO:
MR. MILTON HUDGINS
1894 KATIE LANE
HAYES, VA 23072
(e-mail: judygee03@gmail.com)

Deadline for turning in your 2023 entry forms:

Month of Entry	Deadline (RegMtg)	Month	Deadline (Reg Mtg)
January	15 Feb	July	15 Aug
February	15 Mar	August	19 Sep
March	19 Apr	September	17 Oct
April	17 May	October	21 Nov
May	20 Jun	November	19 Dec
June	18 Jul	December	by Brd Mtg 9 Jan 2024



PLEASE HAND DELIVER TO MONTHLY MEETING or MAIL TO:
PSWSFA, P.O. Box 5194, Newport News, VA 23605

OFFICIAL ENTRY FORM

Eligible Species

Amberjack	40"	Pompano	12"
Albacore Tuna	35"	Sea Bass	15"
Big Eye Tuna	40"	Sailfish	Release
Black Belly Rose Fish	14"	Shark	60"
Black Drum	40"	Sheepshead	15"
Black Fin Tuna	20"	Snapper	12"
Blue Fin Tuna	45"	Spadefish	18"
Bluefish	25"	Spanish Mackerel	20"
Blueline Tilefish	20"	Spearfish	Release
Blue Marlin	Release	Speckled Trout	21"
Channel Bass	40"	Spot	8"
Cobia	40"	Striped Bass	36"
Croaker	16"	Swordfish	Release
Dolphin	35"	Tarpon	Release
False Albacore	25"	Tautog	18"
Flounder	22"	Triggerfish	15"
Golden Tilefish	30"	Wahoo	40"
Gray Trout	24"	White Marlin	Release
Grouper	16"	Whiting (Roundhead)	14"
Jack Crevalle	36"	Yellowfin Tuna	35"
King Mackerel	35"		

I HEREBY CERTIFY THAT THE FOLLOWING STATEMENTS ARE THE TRUTH, AND THE RULES OF THIS CONTEST HAVE BEEN COMPLIED WITH (see back of this sheet)

Required Information:

Tournament _____ Fish: _____

Date Caught: _____ Time Caught: _____ am/pm Length: _____

Name (printed): _____ Adult Youth

Signature: _____ Witness Signature: _____

Optional Information:

Weight: _____ Where Caught: _____

Weight Master Signature: _____



2023 PSWSFA TOURNAMENTS

Download "Official Entry Form" at

[Monthly Tournament - Peninsula Salt Water Sport Fisherman's Association \(pswsfa.com\)](https://pswsfa.com)



FOR ALL TOURNAMENTS

You must register prior to fishing and use the PSWSFA official monthly entry form

Questions Contact: Tournament Director Rick Wineman: rick@getanetsportfishing.com or 757-268-1539

Bishop's Trophy Red Drum Tournament

April 1st – May 31st, 2023

Must Receive Completed Form no later than the Board Mtg.
June 13, 2023

See Rules below for Catch and Release fish totals.
(Witness or photo)

Club Multiple Species Tournament

June 1st – 30th, 2023

Angler who catches the most saltwater species
in a single day

Must Receive Completed Forms no later than the
Board Mtg. July 11, 2023

Youth and Ladies

Croaker/Spanish Mackerel Tournament

July 1st -31st, 2023

Free Tournament for Lady and Youth members/Guests
(Do not need to register to participate)

Must Receive Completed Entry Forms no later than the
Board Mtg. August 8, 2023

Don Forman

Club Cobia Tournament sponsored by Bishop Fishing Supply

August 1st -31st, 2023

Must Receive Completed Form no later than
the Board Mtg. Sept. 12, 2023.

See Rules below for weight tournament

Sheepshead Tournament

August 5, 2023

Separate paid entry tournament. Details and rules to be
announced. Rules and fees listed below do not apply to this
tournament.

Go to www.PSWSFA.com

For Entry Forms and fees etc.

Grafton Fishing Supply

Club Spot Tournament

September 16th – 17th, 2023

Weigh in: 2:00pm Sept. 17th at (Location to be
determined)

All entries will be weighed using the same club scale
followed by the Annual Club Picnic

Spot Tournament - Two categories with 1st – 3rd place
winners:

"ADULT ENTRIES" and "YOUTH ENTRIES"

(Anglers for the Spot Tournament must be present to win)

RSVP by Sept. 15th if you are coming to the Annual Club
Picnic to the Tournament Director

Club Puppy Drum Tournament

October 1st – 31st, 2023

Most number of Spots Wins (photos required)

Must Receive Completed Forms and copies of photos
no later than the Board Mtg. Nov 14, 2023

Wilcox Bait and Tackle

Irv Fenton Rockfish Tournament

December 1st -31st, 2023

Must Receive Completed Form no later than Jan. 9, 2024
See Rules below for weight tournament

MAIL ENTRY FORMS TO: MR. MILTON HUDGINS, 1894 KATIE LANE, HAYES, VA 23072 (e-mail: judyqee03@gmail.com)

ALL Club Tournaments (Except as noted on front):

- Entry Fees: \$20 for member & \$30 for non-member. Youth and Ladies croaker/Spanish mackerel tourney is free.
- Rules and Entry Fees listed below do not apply to the Sheepshead Tournament. This is a sperate paid entry tournament.
- You must register before fishing by e-mailing Rick Wineman: rick@getanetsportfishing.com or call 757-268-1539.
- Leaving a message will be sufficient to register, give all anglers names (specify club members and club guest), and also give a phone number.
- Guest(s) must fish with at least one member on boat/shore/pier/kayak
- Use a club "Official Entry Form" and weigh in fish at any Va. Saltwater Tournament official weigh station for weight tournaments. Record the weight of fish, date and time caught and have the weigh master sign the form to verify catch. If two identical fish are caught on the same day, the earlier fish wins. That is why time is so important. Length tournament entries require witness or photo.
- All pertinent PSWSFA bylaws apply.

**To register or ask questions, e-mail Rick Wineman, Tournament Director
at rick@getanetsportfishing.com or call Rick @ 757-268-1539**

MEASURING INSTRUCTIONS

With the fish lying on a flat surface, measure in quarter inch increments, from the tip of the mouth to the tip of the tail with the fish in a natural position and the mouth closed.



www.pswsfa.com



Fishing Around the World



Boasting 1,777 km of mainland coastline and more than 4,000 km around its 1,200-plus islands, it's no wonder that Croatia is one of the world's top tourist destinations. The crystal clear waters of the Adriatic attract all kinds of holidaymakers, but there's one activity that stands out above the rest. Fishing in Croatia is among the best in Europe, with a range of exciting and delicious fish that can rarely be hooked elsewhere.



With such a diverse range of fishing on offer, there's no surprise that you can catch a range of different fish in Croatia. With over 400 species found in saltwater alone, picking a list of the top species is a tough task. But here's our attempt at a list of prized fish to catch.

Usually found in deep waters, it may be a surprise to some that you can find Bluefin Tuna when fishing in Croatia. But visit during the right time of year, and you can catch plenty of these monsters in the Adriatic Sea.

Strong, tough-fighting, and delicious, these fish are sought-after all over the world, and landing a Bluefin is one of the biggest prizes in Croatia. They start arriving in spring, but they prefer the warmer waters. Wait until it heats up and August and September will give you the best chance to reel in this tasty lump of meat.

The later you leave it, the better chance you've got of catching something else tasty, too. Head offshore in Autumn and not only will you go after some of the last Bluefin Tuna, but Mahi Mahi and Swordfish could be on the end of your line, too!

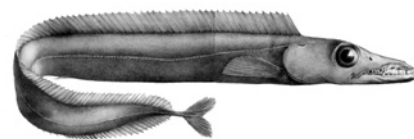
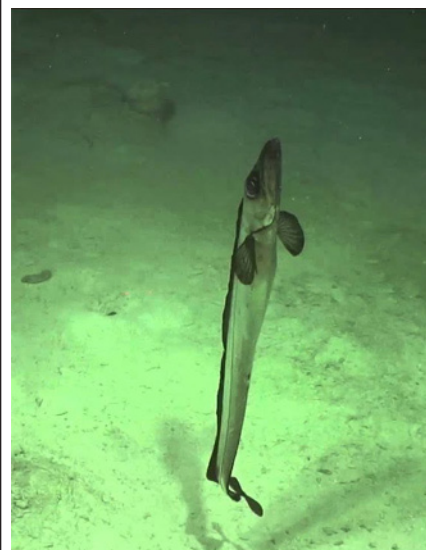
If you're sitting in a restaurant anywhere along the Adriatic coast, chances are you're smelling Seabass. Seabass, or brancina or lubina, as it's known in Croatian, is one of the tastiest fish in the Mediterranean. You'll taste the difference when you catch it yourself, with fresh Seabass reigning supreme over any farmed variety.

Found in the shallower waters close to shore, these creatures can be reeled in on short trips, and even sometimes from shore – especially on the islands. Try bottom fishing and jigging to attract their attention, with the chance of a monster species coming in late autumn and early winter.

However, you'll still have the chance to land one in spring and summer, with the added chance of landing Seabream, Dentex, Pandora, Mackerel, and more. These equally-delicious creatures will be a joy to behold as you savor the fruits of your labor with a BBQ at the end of the day!

**So you think you know
your Fish**

Answer next month





As a member of Peninsula Salt Water Sport Fisherman's Association,
a BoatU.S. Cooperating Group, you are invited to become a BoatU.S. Member
at a special rate:

\$15 Boat U.S. Membership Dues and 10% off Water Towing Services

BOAT U.S. COOP GROUP #: Contact Gary Donaldson at
GaryD66@Cox.Net
For the PSWSFA Coop group #

NEW MEMBERS

Sign up online at BoatUS.com/Join
(enter your BoatU.S. Coop Group #
on the first page of the application)

CURRENT MEMBERS

Not receiving the discount? Email
Membership@BoatUS.com

MEMBERSHIP BENEFITS INCLUDE:

- 24/7 Dispatch to over 600 towboats in 300+ ports nationwide
- Marine insurance for boaters with 24/7 claims service
- Discounts on fuel, slips, repairs & more at over 1,200 boating businesses nationwide
- Subscription to *BoatU.S. Magazine* – 6 issues per year

Visit BoatUS.com/Membership to learn about all benefits
and services offered to BoatU.S. Members.

09/11/11 BT7



INSURANCE



DISCOUNTS



MAGAZINE



SAFETY



ADVOCACY



TOWING



TRAILER SERVICE



DISCOUNTS

Directions to PSWSFA Meeting

**Former St Mark's Episcopal Church
Now used by Peninsula Baptist Church**

From 64 (either direction) take the Mercury Blvd exit towards the James River Bridge (West) stay in the right hand lane and turn right at the light onto Todds Lane. Go past Zaxby's chicken about 400 ft and the driveway to the church is on the right. The original St, Mark's sign is still on the lawn just short of the driveway with a new Baptist church message.

If you come to the traffic light at the intersection of Cunningham you went to far. Turn right on Cunningham and look for the Cunningham entrance to the church (500ft). If you miss it you will need to do a U-turn on Cunningham and go left onto Todds Lane.

The church driveway is just short of the Bercuse Funeral home entrance or just after it if coming from Cunningham.

WHAT'S UP NEXT & BEYOND



15 August 2023 - Regular Meeting 1900hrs

Speaker from the Health Department will speak on Vibrio. This is a must see talk for any fisherman.

PENINSULA SALT WATER SPORTS FISHERMAN'S ASSOC.
P.O. Box 5194
NEWPORT NEWS, VA 23605

