



The PSWSFA is a family-oriented fishing club established in 1957. Our meetings are held on the 3rd Tuesday of each month (March-Dec.) at 7:00pm. The meetings are free and open to the public and are a great place to swap stories with other local fishermen, find new fishing partners and plan trips together. We have raffles with nice giveaways-donated by local businesses plus prizes we buy ourselves. Each month we have speakers sharing their experience on one of the local fisheries. Come join us and get to know some of the other fishermen in your local area. Directions on last page. You can visit us at www.pswsfa.com.

Next meeting 21 June 2022 7:00pm

Greetings, and welcome to June. Summer is nearly here and a lot of fish are being caught.

First off I'd like to welcome Paul Downey as a new board member. Paul is redesigning our web page and was able to show the board his progress at our monthly board meeting at Joe and Mimmas. It looks fantastic and should be going live by the end of the month.

Next month's meeting will include Milton presenting last years awards in several categories. I will hopefully have a list of those getting an award listed in next months Chumline so they can be present to accept their awards in person.

Stan Simmerman's very young grandson caught a Lookdown which was entered in our critter of the year contest. See picture on page 10. They are apparently abundant in the bay but catching one on hook and line here is unusual.

Stay well - Mike the Editor

Remember, blue text within
an article represents a link.

Boaters Beware: E15 At Pumps Throughout Boating Season

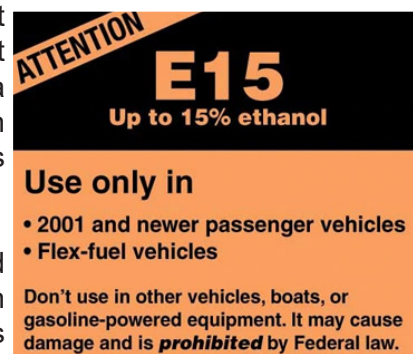
This boating season it is going to be imperative to pay attention at the pump, as a new emergency rule will allow E15, a harmful fuel for boat engines, to be sold throughout the summer. E15, or gasoline that uses a 15 percent ethanol blend, is a widespread, common fuel type that can be harmful for recreational boat engines and should be avoided at all costs.

If you are trailering your vessel and filling up at a gas station, be certain you are not using E15 fuel. While it is required by law to be labeled, if you have any doubt, ask the station attendant.

Despite the rationale behind the extension of using E15 into the summer, the threat to the recreational boating industry, your customers, and MRAA members is the same. Put simply, E15 is bad for boat engines.

Not only are you prohibited by Federal law to use E15 in your vessel, but also E15 is proven to cause damage to boat engines. A test done by Mercury Marine, under contract of the U.S. Department of Energy, found that all of the engines tested showed signs of elevated piston and exhaust temperatures, and according to Jeff Wasil, the engineering manager of emissions testing at BRP, this can be fatal for boat engines.

"Since marine engines can run for extended periods of time at wide-open throttle, any increase in exhaust gas temperature will cause issues," Wasil noted. Not only does E15 cause issues while running the engine, it can also have negative effects on engine components if left in the engine, fuel tanks and fuel lines for an extended period, as ethanol is a harsh solvent.



2022 Club Officers

Danny Forehand

President

Milton Hudgins

Vice President

Wally Veal

Secretary

Christina Grice

Treasurer

Charles Southall

Corresponding Secretary

Stan Simmerman

Past President

Board of Directors

John Hunt Jr.

Ronnie Wilson

Gary Donaldson

Dave Boyce

Rick Wineman

Charles Randolph

Paul Downey

David Agee

Mike Frielingsdorf

Richie Moore

Daily Vandergriff

Johnny Boyd

Gerald Abrams (alt)



Attention all members: This is a reminder that all memberships will now expire on the last day of February of each year. Forms are available from Johnny Boyd (membership committee). At the December 2019 board meeting the board voted to increase the dues by \$10. As before, the \$40 is per individual or family. We haven't had a dues increase in pretty much forever and this will help the club pay for the increased cost of our meeting space as well as supporting events like the picnic, awards banquet, and fishing related events, organizations, and tournaments.

PSWSFA 2022 MEMBERSHIP

Dues: \$40 per year for entire family*
(March through February - not prorated throughout the year)

Name: _____ Spouse: _____

Dependents Names and ages

1) _____ 4) _____

2) _____ 5) _____

3) _____ 6) _____

*Family must be living with you

Address: _____

City: _____ State: _____ Zip: _____ Home Phone: _____

E-Mail: _____ Cell Phone: _____

Boat Name/Call Sign: _____

Total number in your membership: _____

Send this form with a check (payable to PSWSFA) to:

PSWSFA
P.O. Box 5194
Newport News, VA 23605

Please check one of the following:

☐ Yes, please add my name to the club membership book
☐ No, please do not publish my information

NORFOLK CRUISE BOAT CARRYING 89 SCHOOLCHILDREN CATCHES FIRE

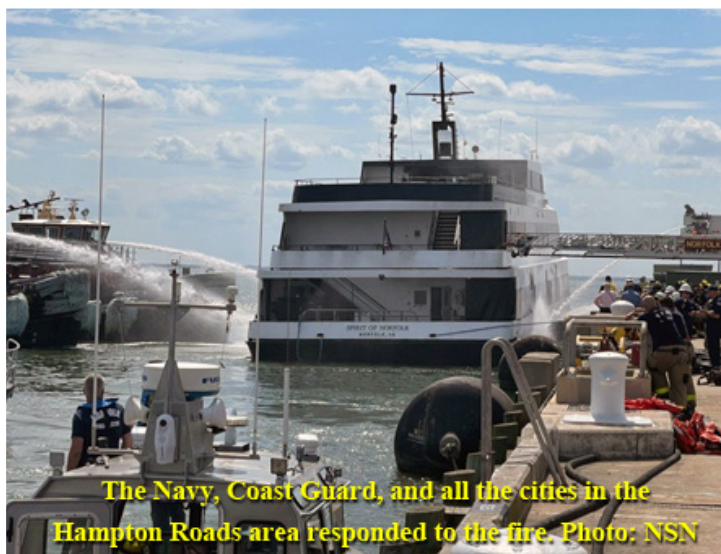
June 7, 2022

A day on the water turned scary for a school group aboard the private cruise boat Spirit of Norfolk when it caught fire Tuesday. But thanks to some quick-thinking crew and emergency responders, everyone made it safely off the boat.

There were 106 passengers and crew aboard, including 89 schoolchildren, according to the boat's operator City Cruises.

Spirit of Norfolk's crew called for help just after noon on Tuesday, and mariners sprang into action. Naval Station Norfolk (NSN) responded with two tugboats and a competing Norfolk passenger cruise ship, the Victory Rover, also rushed to the scene.

City Cruises praised the vessel's crew for employing their training, "acting swiftly and immediately" to bring more than 100 people safely off the boat. After most of the passengers were quickly evacuated, the boat was escorted back to NSN Pier 4, where firefighting efforts continued well into the evening.



"Vessel fires are extremely complicated. We cannot continue just to put water on the vessel or we risk the vessel either capsizing or sinking. So we're actively working through a salvage and firefighting plan but we have to be very deliberate to make sure that we safeguard the environment as well as the vessel," said Captain Jennifer Stockwell, Deputy Commander of Coast Guard Sector Virginia in a press conference Tuesday evening.

NSN also acknowledged the challenges of fighting the blaze. "The fire is deep-seeded, complex and very difficult to extinguish. We are doing everything we can to cool the hull and get water to the engine room where we believe it possibly started," said Naval Station Norfolk Fire Chief Sickell.

Chief Sickell said both water and firefighting foam were being used to battle the fire.

The emergency response was notable for the extensive number of different agencies that worked together. In addition to NSN, the Coast Guard, Victory Rover, and Norfolk Fire-Rescue, the cities of Chesapeake, Hampton, Newport News, Virginia Beach and Portsmouth were all involved.

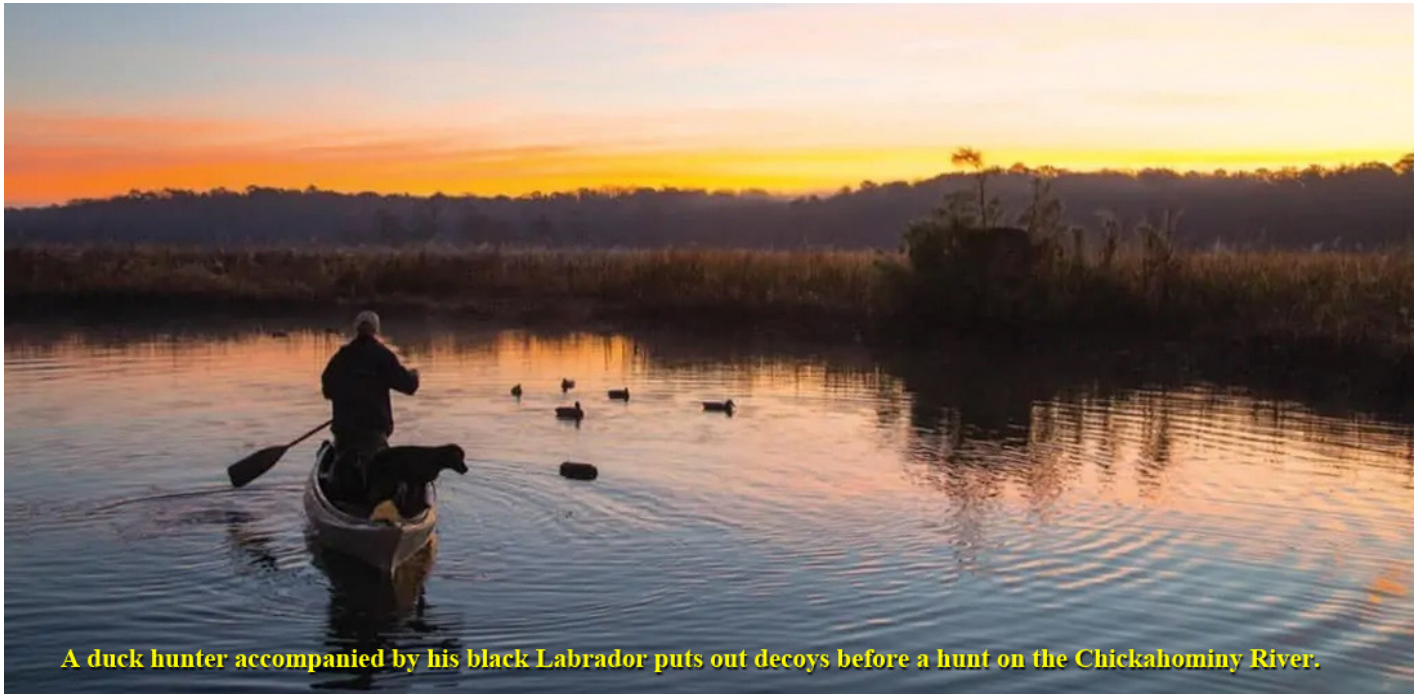
Some noted the Navy's decision to respond to a "civilian vessel" like Spirit of Norfolk. But Naval Station Norfolk's Commanding Officer, Captain David Dees explains, "To us, it is not just a civilian ship. It was a vessel in need and it had 106 passengers that needed help. And that's exactly what we all did today as a team."

Said Capt. Stockwell, "We are exceptionally fortunate that we saved all the lives, in no small part thanks to the Navy ... while we're still combatting an active fire, we can say all lives were saved today."

It's too early to tell the extent of the damage to the boat.

Jolene Price-Thompson, General Manager for City Cruises, said in a statement, "The safety of our riders and crew is always our first priority as we continue to uphold our vessels with the vigorous safety and protocols in place."

Looks like scrap to me...



A duck hunter accompanied by his black Labrador puts out decoys before a hunt on the Chickahominy River.

EXPLORING THE CHICKAHOMINY

One of the best things about growing up was fishing with my father on the Chickahominy River. We'd drive east from Richmond, stop in Providence Forge for breakfast and bait, and then head to Sherman Jefferson's landing on Chickahominy Lake, to rent one of "Jeff's" wooden skiffs and clamp our green, five-horsepower Johnson outboard onto its transom. One part of the magic was the bass and bream (bluegills) in the lake. The other was the fact that Jefferson, an expert riverman, and his family were Chickahominy Indians. Chickahominy, in the tribe's Algonkian language, means People of the Coarse-Pounded Corn. In January 2018, after a long struggle, the tribe gained federal recognition.

We also fished lower lake out of Ed Allen's landing, which is still in operation under the family's third generation. Today, people know the Chickahominy by the signs bearing its name as it flows back and forth beneath Interstate 64 between Richmond and Williamsburg. At eighty-seven miles in length, it's a major Chesapeake tributary rising fifteen miles northwest of Richmond. Chickahominy Lake came into being in 1943 when the War Department erected Walker's Dam at Lanexa to ensure a water supply to the Newport News Shipbuilding & Drydock Company and nearby military installations. After the war, the City of Newport News bought the dam to supply water to its growing population. There is a manually operated lock in the dam that allows a few boaters and fish to move back and forth. The dam altered the river's dynamics significantly, especially in reducing the herring and shad runs that Sherman Jefferson and Ed Allen grew up fishing commercially.

The river below Lanexa is tidal-fresh water, rimmed by cypress trees and broad, wild-rice marshes, flowing twenty-two miles south to join the James River six miles above Jamestown and nine miles by road west of Williamsburg. We fished the lower river too, and during my career with the Chesapeake Bay Foundation, I found excuses to ply the river with canoe fleets and my trusty skiff.

For folks who appreciate fish, birds, and Chesapeake history, the Chickahominy is a jewel. That's especially true in the last several weeks of Indian Summer. The cypress trees have turned a lovely shade of russet heather to set off the reds and yellows of sweetgums, maples, oaks, and sycamores on the banks behind them. Meanwhile, the river is far enough south that some of the wild rice and

Continued on Pg 5

pickerelweed are still flowering, adding texture and color to the marshes. The marshes are attracting migratory waterfowl while falling water temperatures are telling the largemouth bass, bream, crappie, yellow perch, white perch, chain pickerel, and blue and channel catfish to feed heavily before winter.

Four-hundred-twelve years ago, the Jamestown colonists realized that, though they had managed to build a fort on the island they had appropriated, they had not raised or stored any food for the winter. Captain John Smith went up the Chickahominy with a small crew aboard the 30-foot workboat he would use the following year to explore and chart the Chesapeake. He stopped at villages along the river and traded English goods for corn. On the third trip, however, well upriver into the swamp above today's lake, he was captured and several of his crew were killed by Opechancanough, the warlike brother of Powhatan, the region's paramount chief, from whom the Chickahominy were independent.

Whether you are exploring Chickahominy Lake or the river, it's not hard to find reaches that look much the same as when Captain Smith came through. He noted the locations of several Chickahominy villages, and his map is so accurate that you can take a copy onto the river and find those very places. For example, River's Rest, a marina/motel/restaurant about halfway up the river, sits opposite the site of Werawahon. Because the Indians saw the river as uniting its opposite banks instead of dividing them, it's probable that over time, they hunted and farmed both, as well as foraging edible plants and trapping in the adjacent Big Marsh. There's a lot of history here, from the tribes and Captain Smith up through fishing and timber industries, a brickyard, a shipyard, and the Civil War's Peninsula Campaign.

Jeff's is no longer open to the public, but at the head of the lake, near Providence Forge, Eagle's Landing offers rental johnboats, a launch ramp, and a tackle shop geared primarily to bass anglers. Ed Allen's, next to Walker's Dam, offers everything from boat rentals and a launch ramp, to campgrounds, a tackle shop, and a restaurant. Want to see and fish the lake with a truly experienced guide? Captain Art Conway (Conway's River Rat Guide Service), a retired biology professor, has been showing off the wonders of Chickahominy Lake to visitors for more than thirty years. The river below Walker's has received more attention with the establishment of the Captain John Smith Chesapeake National Historic Trail. The James River Association, with multiple partners, has produced a splendid map and guide to exploring it. For paddling, my favorite trip is the loop around Gordon's Island, launching from the boat ramp at Chickahominy Riverfront Park and paddling up Gordon's Creek, into Nayses Bay at the east end of the island, and returning by Nettles Creek. This seven-mile trip is most pleasant when high tide in Nayses Bay occurs at mid-day, giving the boat a fair current for the whole trip.

The narrows off the West end of Gordon's Island is exposed to wind and nearly 100 feet deep. It's a reminder of the Chickahominy River's power, and the need to be careful about weather. In more challenging conditions, there is plenty to see by simply exploring Gordon's Creek from the park's ramp. There's a shorter paddling loop around the island at Big Marsh Point, upriver opposite River's Rest. For exploring the river under power, the ramps at both River's Rest and the Riverfront Park serve skiffs very well, and River's Rest can even handle large cruising boats. The various creeks are plenty deep for powerboats, but be careful in the narrow channels. It's a kindness to both the marshes and paddlers afloat to keep wakes low.

Whatever your vessel of choice, Chickahominy Lake and the River beckon you. Take a weekend and see them both. They form a very special part of the Chesapeake.

Virginia Beach Fishing

Water temperature along the oceanfront and near the CBBT is approaching 75 degrees. At the mouth of the Elizabeth River, it's a warm 77. Offshore at the Norfolk Canyon it's hovering around 68. That means just about everything's biting now! Inshore, red drum, cobia, spadefish, sheepshead, flounder, bluefish and spanish mackerel. Offshore, tuna, dolphin, marlin, tilefish and seabass.

Anglers trolling the ocean front are catching spanish mackerel. Bluefish and ribbon fish are mixed in with the spanish.

Spadefish are around buoys, the pylons of the CBBT and the Chesapeake Light Tower. Also hanging around the pylons are hungry sheepshead.

Big red drum are throughout the lower Bay. Anglers are having success sight casting and bottom fishing.

Cobia action remains good. Most anglers are fishing live bait in chum slicks. But you never know when they'll pop up on the surface, so always have a rod ready to sight cast. We'll be able harvest some for the table after the season opens June 15th. Until then you can earn a Virginia Release Citation for any released over 50 inches. Don't forget your VMRC cobia permit and recordings.

Flounder catches are picking up. Look for them along the CBBT, around inshore wrecks and artificial reefs throughout the lower bay and along the coast.

Pier and surf anglers are finding spanish, bluefish, flounder, croaker, sea mullet and small spot.

Coastal wrecks are holding bluefish and triggerfish. Big AJ's (amberjacks) should be arriving as well.

Offshore, yellowfin tuna action is excellent which is great news for the Virginia Beach Tuna Tournament. This week a couple of boats caught tuna limits. Dolphin fishing should take off any day. The Virginia Beach Tuna Tourney takes place June 22nd – 25th, 2022. Weigh stations are Long Bay Pointe Marina and The Virginia Beach Fishing Center.

Anglers bottom bouncing the edge of the canyon continue catching blueline tilefish, golden tilefish and sea bass.

Last Month's Mystery Fish The Moonfish or Opah



Opah or moonfish is one of the most colorful of the commercial fish species available in Hawaii. A silvery-grey upper body color shades to a rose red dotted with white spots toward the belly. Its fins are crimson, and its large eyes are encircled with gold. The moonfish's large, round profile may be the origin of its name.

An opah has three types of flesh, each a different color. Behind the head and along the backbone is an attractive orange colored flesh. Toward the belly, the flesh pales to a pink color. The fish's cheeks yield dark red flesh. These types of flesh all cook to a white color.

Opah landed in Hawaii range from 60 to over 200 pounds in weight. A pelagic wandering species, it is often found in the company of tunas and billfish. All of the opah landed in Hawaii are caught by longlining. Almost all opah sold in the U.S. market are from Hawaii.

It is rich and tasty. Previously underutilized, there is a rising demand for opah, particularly in the restaurant trade.



Select Recreational Fishing Regulations

May 2022



Atlantic Croaker

- Minimum Size Limit: No size limit
- Recreational Bag Limit: 50 per person; additional 50 live bait per customer capacity on for-hire or charter vessels



Spot

- Minimum Size Limit: No size limit
- Recreational Bag Limit: 50 per person; additional 50 live bait per customer capacity on for-hire or charter vessels



Kingfish

- Minimum Size Limit: No size limit
- Recreational Bag Limit: No bag limit



Grey Trout (Weakfish)

- Minimum Size Limit: 12 inches
- Recreational Bag Limit: 1 per person



Bluefish

- Minimum Size Limit: No size limit
- Recreational Bag Limit: 3 per person from shore or a rented or private vessel 5 per person on for-hire or charter vessels



Spanish Mackerel

- Minimum Size Limit: 14 inches
- Recreational Bag Limit: 15 per person



King Mackerel

- Minimum Size Limit: 27 inches
- Recreational Bag Limit: 3 per person



Cobia (Permit Required)

- Minimum Size Limit: 40 inches
- Recreational Bag Limit: 1 per person or 2 per vessel, whichever is more restrictive. Only 1 fish per vessel may be greater than 50 inches total length.
- Season: June 15 - September 15



Summer Flounder

- Minimum Size Limit: 16 inches
- Recreational Bag Limit: 4 per person



Striped Bass

Any person fishing striped bass recreationally shall use non-offset, corrodible, non-stainless steel circle hooks when fishing with bait.

Chesapeake Bay Spring Season

- Size Limit: 20-28 inches
- Recreational Bag Limit: 1 fish per person
- Season: May 16 - June 15

Chesapeake Bay Fall Season

- Size limit: 20-36 inches
- Recreational Bag Limit: 1 fish per person
- Season: October 4 - December 31

Coastal Season

- Size Limit: 28-36 inches
- Recreational Bag Limit: 1 per person
- Season: January 1 - March 31, May 16 - December 31

Select species provided for information purposes only. Not all regulated species are included. All regulations are subject to change. It is the angler's responsibility to know and abide by all current regulations and laws. Check for new regulations before you go fishing. www.mrc.virginia.gov



Spadefish

- Minimum Size Limit: No size limit
- Recreational Bag Limit: 4 per person



Sheepshead

- Minimum Size Limit: No size limit
- Recreational Bag Limit: 4 per person



Black Sea Bass

- Minimum Size Limit: 13
- Recreational Bag Limit: 15
- Season: May 15-December 11



Tautog

- Minimum Size Limit: 16 inches
- Recreational Bag Limit: 4 per person
- Season: January 1-May 15, July 1- Dec. 31



Speckled Trout

- Minimum Size Limit: 14 inches
- Recreational Bag Limit: 5 per person, only 1 greater than 24"



Red Drum

- Minimum Size Limit: 18 inches
- Maximum Size Limit: 26 inches
- Recreational Bag Limit: 3 per person



Black Drum

- Minimum Size Limit: 16 inches
- Recreational Bag Limit: 1 per person

In his book *Works of Art*, John Koehler explains that he was born with the ability to “see things and put them down on paper.” His digital creations burst with wonderful colors and imagination—and it’s all accomplished on an iPad. Starting this weekend, you will be able to see his works in a new exhibit in Virginia Beach, Va.

First to notice his abilities, of course, was his mother. His school teachers noticed as well, and moved him from the beginning art class to be with the more advanced young artists. Teachers even purchased some of his early pen and ink drawings. In the early 1990s, Koehler bought a digital camera and began creating with digital photo editing software. The ability to replace backgrounds or turn someone into an animal fascinated Koehler. He had used a variety of artistic mediums before, but was drawn to digital because of “the ease of manipulation and the ability to alter things quickly on the move. If you screw up an oil painting you may have to start over. With digital art you simply undo and go back.”

In 2010, Apple released its first iPad. Using a program called Brushes, Koehler was able to literally finger paint on the screen. Koehler took his digital photos and gave them an incredible boost in color and creativity. In 2018, Apple’s release of the iPad Pro, with its higher resolution screen and ability to use a digital pencil, opened even more doors for his creativity. He began doing portraits, and received additional inspiration from the family dog and the abundant wildlife in coastal Virginia. In addition to dogs and wildlife, he categorizes his other works as Dreamscapes, Honorific Nudes, Angels and Humans, and Mermaids and Sprites.



John Koehler creates his head-turning art on an iPad. Image courtesy of the artist.

His keen eyes were not just good at creating art. Koehler had excellent hand-eye coordination, and somehow got into throwing boomerangs. He was so good he started creating his own boomerangs, and even won the 1991 world championship in Perth, Australia! In 2002, he coached the U.S. Boomerang team to win the world championship in Germany.

Not sure if he could make a living as an artist or boomerang athlete, Koehler worked as a graphics designer in commercial advertising for 12 years. In 1994, he thought the time was right to move to Virginia Beach and open his own studio.

Koehler’s wife suggested he create images of wildlife and sea life for Lynnhaven River NOW, a local environmental group that is working to restore the Lynnhaven River. His first piece was a crab. He now has about 75 creations that will be on display beginning this weekend. His works are displayed as Giclee archival canvas prints and are framed in black. A portion of the proceeds will benefit Lynnhaven River NOW, as well as The World Wildlife Fund, Chesapeake Bay Foundation and Virginia Beach SPCA.

The gallery is at 3705 Shore Drive, Va. Beach, VA 23455. The exhibit opens June 18 during a special evening preview. No end date has been scheduled. You can find out more at koehlerartworks.com.

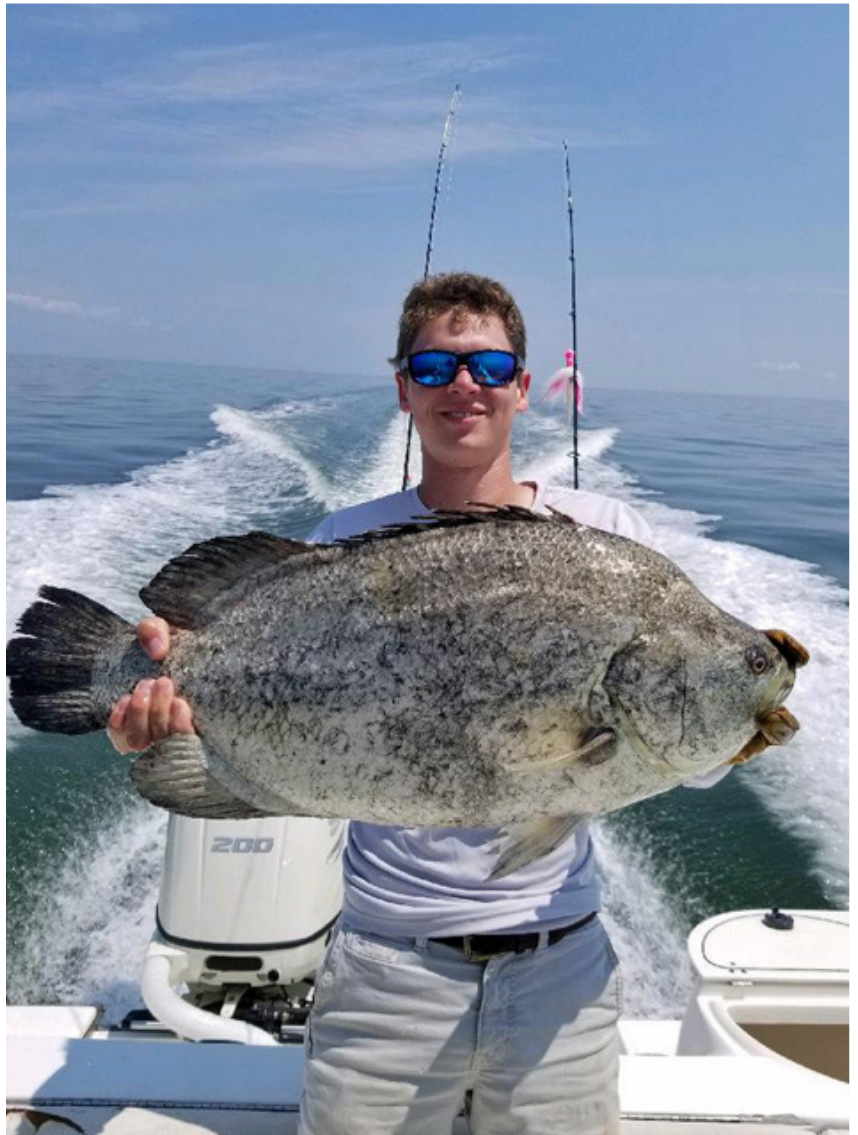
-Kendall Osborne

State Record Atlantic Tripletail Certified

A 16-pound 12-ounce Atlantic tripletail (*Lobotes surinamensis*), caught on July 23, 2021 by **Richard H. Stuart Jr.**, of King George VA, has been certified as a new Virginia State Record for the species by the Virginia Saltwater Fishing Tournament. The record-setting tripletail measured 28 inches (TL) and sported a 23-inch girth. Richard Jr. and his dad, Richard Stuart Sr., were primarily sight fishing for cobia in the vicinity of York Spit Light, when Richard Jr. saw a flash at a distance. Instinctively he piloted the family's private vessel, Fish-On, over to take a look. The pair were able to approach close enough to identify the "flash" as a tripletail and Richard Jr. pitched a 2-ounce cobia jig near the fish. That initial offering was ignored. A second cast put the jig on a path closer to the fish and as jig passed the tripletail the response was a solid hookup. After a spirited 10 minute back forth tussle the fish was brought boatside. The catch was made on gear suitable for cobia, a Shimano Tetramar XX spinning rod mated with a Shimano Twin Power SW 5000 spinning reel spooled with 40-pound Power Pro braided line. The fish was officially weighed at Grafton Fishing Supply in Yorktown and viewed and positively identified by VSWFT Committee member Dr. Ken Neill.

Tripletail are not a new arrival to Chesapeake Bay waters but, with the rise in the popularity of sight fishing for cobia, encounters seem on the increase. Along the Atlantic Coast tripletail have been collected as far north as Massachusetts but are only rarely found north of the Chesapeake Bay. In more southern states, and especially in Georgia and Florida and the Gulf States, tripletail are highly esteemed by recreational anglers for both the challenge they offer and as a table fish. Their flesh has been compared to other mild tasting white fleshed fish as snapper and grouper.

Tripletail were added to the list of eligible species for state record consideration in 2020 with an initial qualifying weight of 8 pounds. No entries were submitted that first year. Stuart Jr.'s fish replaces the initial state record tripletail, an 8-pound 9-ounce fish caught by Hayden Head earlier in July and caught in the same vicinity.





FISH TALES



Monthly Tournament List April 2022

Sea Bass

Stan Simmerman 21.5"

Tautog

Stan Simmerman 24.5"

Black Drum

Wally Veal 47"

Channel Bass

Paul Downey 55"

Monthly Tournament Contenders	
Species	Min Size
Albacore Tuna	35"
Amberjack	40"
Bigeye Tuna	40"
Black Drum	40"
Blackbelly Rosefish	14"
Blackfin Tuna	45"
Bluefin Tuna	45"
Bluefish	25"
Blueline Tilefish	20"
Blue Marlin	Release
Channel Bass	40"
Cobia	40"
Croaker	16"
Dolphin	35"
False Albacore	25"
Flounder	22"
Golden Tilefish	30"
Gray Trout	24"
Grouper	16"
Jack Crevalle	36"
King Mackerel	35"
Pompano	12"
Sailfish	Release
Sea Bass	15"
Shark	60"
Sheepshead	15"
Snapper	12"
Spadefish	18"
Spanish Mackerel	20"
Spearfish	Release
Speckled Trout	21"
Spot	8"
Striped Bass	36"
Swordfish	Release
Tarpon	Release
Tautog	18"
Triggerfish	15"
Wahoo	40"
White Marlin	Release
Whiting (Roundhead)	14"
Yellowfin Tuna	35"

Photo taken in 2017 by the Editor at the Hilton Waikoloa lagoon, Da Big Island, Hawaii

Bring your entries to Milton at our monthly meeting by 7:00 pm or send an email or snail mail to the address' on the left (Yellow Box). Please direct any questions to Milton.

MAIL ENTRY FORMS TO:
MR. MILTON HUDGINS
1894 KATIE LANE
HAYES, VA 23072
(e-mail: judygee03@gmail.com)

Deadline for turning in your 2022 entry forms:

Month of Entry	Deadline (RegMtg)	Month	Deadline (Reg Mtg)
January	15 Feb	July	16 Aug
February	15 Mar	August	21 Sep
March	19 Apr	September	18 Oct
April	17 May	October	15 Nov
May	21 Jun	November	20 Dec
June	19 Jul	December	by Brd Mtg 10 Jan 2023



PLEASE HAND DELIVER TO MONTHLY MEETING or MAIL TO:
PSWSFA, P.O. Box 5194, Newport News, VA 23605

OFFICIAL ENTRY FORM

Eligible Species

Amberjack	40"	Pompano	12"
Albacore Tuna	35"	Sea Bass	15"
Big Eye Tuna	40"	Sailfish	Release
Black Belly Rose Fish	14"	Shark	60"
Black Drum	40"	Sheepshead	15"
Black Fin Tuna	20"	Snapper	12"
Blue Fin Tuna	45"	Spadefish	18"
Bluefish	25"	Spanish Mackerel	20"
Blueline Tilefish	20"	Spearfish	Release
Blue Marlin	Release	Speckled Trout	21"
Channel Bass	40"	Spot	8"
Cobia	40"	Striped Bass	36"
Croaker	16"	Swordfish	Release
Dolphin	35"	Tarpon	Release
False Albacore	25"	Tautog	18"
Flounder	22"	Triggerfish	15"
Golden Tilefish	30"	Wahoo	40"
Gray Trout	24"	White Marlin	Release
Grouper	16"	Whiting (Roundhead)	14"
Jack Crevalle	36"	Yellowfin Tuna	35"
King Mackerel	35"		

I HEREBY CERTIFY THAT THE FOLLOWING STATEMENTS ARE THE TRUTH, AND THE RULES OF THIS CONTEST HAVE BEEN COMPLIED WITH (see back of this sheet)

Required Information:

Tournament _____ Fish: _____

Date Caught: _____ Time Caught: _____ am/pm Length: _____

Name (printed): _____ Adult Youth

Signature: _____ Witness Signature: _____

Optional Information:

Weight: _____ Where Caught: _____

Weight Master Signature: _____



2022 PSWSFA TOURNAMENTS

Download "Official Entry Form" at

<http://www.pswsfa.com/MonthlyEntry.pdf>



FOR ALL TOURNAMENTS

You must register prior to fishing and use the PSWSFA official monthly entry form

Questions Contact: Tournament Director Rick Wineman: rick@getanetsportfishing.com or 757-268-1539

<p>Club Tog Tournament March 1st – April 11th, 2022 Must Receive Completed Form no later than the Club Mtg. April 19, 2022 See Rules below for weight tournament</p>	<p>Bishop's Trophy Red Drum Tournament May 1st – 31st, 2022 Must Receive Completed Form no later than the Club Mtg. June 21, 2022 See Rules below for Catch and Release fish totals. (Witness or photo)</p>
<p>Club Multiple Species Tournament June 1st – 30th, 2022 Angler who catches the most saltwater species in a single day Must Receive Completed Forms no later than the Club Mtg. July 19, 2022</p>	<p>Youth and Ladies Croaker/Spanish Mackerel Tournament July 1st -31st, 2022 Free Tournament for Lady and Youth members/Guests (Do not need to register to participate) Must Receive Completed Entry Forms no later than the Club Mtg. August 16, 2022</p>
<p>Don Forman Club Cobia Tournament sponsored by Bishop Fishing Supply August 1st -31st, 2022 Must Receive Completed Form no later than the Club Mtg. Sept. 20, 2022 See Rules below for weight tournament</p>	<p>Grafton Fishing Supply Club Spot Tournament September 17th – 18th, 2022 Weigh in: 2:00pm Sept. 18th at Dare Marina All entries will be weighed using the same club scale followed by the Annual Club Picnic Spot Tournament - Two categories with 1st – 3rd place winners: "ADULT ENTRIES" and "YOUTH ENTRIES" (Anglers for the Spot Tournament must be present to win) RSVP by Sept. 16th if you are coming to the Annual Club Picnic to the Tournament Director</p>
<p>Club Puppy Drum Tournament October 1st – 31st, 2022 Most number of Spots Wins (photos required) Must Receive Completed Forms and copies of photos no later than the Club Mtg. Nov 15, 2022</p>	<p>Wilcox Bait and Tackle Irv Fenton Rockfish Tournament December 1st -31st, 2022 Must Receive Completed Form no later than Jan. 17, 2023 See Rules below for weight tournament</p>

MAIL ENTRY FORMS TO: MR. MILTON HUDGINS, 1894 KATIE LANE, HAYES, VA 23072 (e-mail: judygee03@gmail.com)

2022 PSWSFA Tournaments Rules

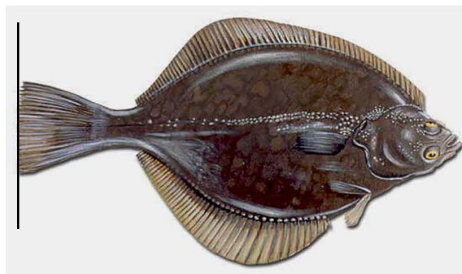
ALL Club Tournaments (Except as noted on front):

- Entry Fees: \$20 for member & \$30 for non-member. Youth and Ladies croaker/Spanish mackerel tourney is free.
- You must register before fishing by e-mailing Rick Wineman: rick@getanetsportfishing.com or call 757-268-1539.
- Leaving a message will be sufficient to register, give all anglers names (specify club members and club guest), and also give a phone number.
- Guest(s) must fish with at least one member on boat/shore/pier/kayak
- Use a club "Official Entry Form" and weigh in fish at any Va. Saltwater Tournament official weigh station for weight tournaments. Record the weight of fish, date and time caught and have the weigh master sign the form to verify catch. If two identical fish are caught on the same day, the earlier fish wins. That is why time is so important. Length tournament entries require witness or photo.
- All pertinent PSWSFA bylaws apply.

**To register or ask questions, e-mail Rick Wineman, Tournament Director
at rick@getanetsportfishing.com or call Rick @ 757-268-1539**

MEASURING INSTRUCTIONS

With the fish lying on a flat surface, measure in quarter inch increments, from the tip of the mouth to the tip of the tail with the fish in a natural position and the mouth closed.



www.pswsfa.com



June 10, 2022: Effective 6:00 P.M., Friday, June 17, 2022, the commercial non-purse seine menhaden bait fishery will close. This sector includes cast net, dredge, fyke net, gill net, pound net, haul seine and trawl. Based on landing reports from mandatory harvest reporting, it is projected that Virginia will have caught 100% of the 5,289,548 pounds of the commercial non-purse seine menhaden bait sector quota, by the above date and time.

Beginning at 6:01 P.M., Friday June 17, 2022, any person licensed in the non-purse seine menhaden bait sector may possess and land up to 6,000 pounds of menhaden per calendar day as bycatch. Any two persons licensed in the non-purse seine menhaden bait sector may possess and land up to 12,000 pounds of menhaden bycatch when working together from the same vessel using a stationary multi-species gear (pound nets, anchored/staked gill nets, and fyke nets) per the Atlantic States Marine Fisheries Commission incidental catch provision.

May 31, 2022: REMINDER: cobia season opens June 15! The season is June 15-September 15; there is a 1 fish per person, 2 fish per vessel possession limit; and a prohibition on gaffing. The minimum size is 40" total length with one allowed on a vessel >50" total length. To get your permit, please visit: <https://webapps.mrc.virginia.gov/public/mpermits/>. The deadline to report is October 6, 2022.

May 19, 2022: The Virginia Marine Resources Commission has announced the results from the 2022 Baywide Blue Crab Winter Dredge Survey which indicates a continued downturn in juvenile recruitment and a record low year of total blue crab abundance. ([Press Release](#))

April 29, 2022: New recreational fishing measures for summer flounder, scup, and black sea bass were approved at the April 26, 2022 meeting of the VMRC. Effective May 1, 2022, the minimum size limit for summer flounder will be decreasing to 16 inches, the minimum size limit for scup will be increasing to 9 inches, and the minimum size limit for black sea bass will be increasing to 13 inches with a May 15-December 11 season.



Dave Braband with nice Cobia



Our May speaker - Mr. Ethan Simpson from VMRC



Fishing Around the World



In Egypt thousands of km shoreline provide a variety of fishing grounds and undiscovered spots which comprise game fish including Barracuda, Groupers, King Mackerel, Giant Trevally, Sailfish and many surprises. With quite a few protected areas around legal fishing hot spots may be a couple of hours away from the harbour. Therefore we do recommend to book overnight safaris but day trips are available too. They are especially prone for those anglers who would like to combine sport fishing with a beach resort holiday. The Red Sea is perfect for those who want to engage into big game popping, jigging, trolling and bottom fishing, with diving, snorkelling, kite surfing and may be even sight seeing of ancient monuments of culture. The Red sea is a magnificent destination.



FISHING SAFARI PROGRAM: After the breakfast trolling for two hours, At 13.00 stop in a nice place for snorkeling, bottom fishing and lunch. After the lunch, trolling until sunset. Stop in evening in a quiet nice place to make bottom fishing, diner and over night on board.

Dogtooth Tuna are generally caught either trolling or jigging. For trolling for large ones a 50 W type trolling outfit with 100lb braided line should be sufficient.

Dogtooth Tuna can become caught trolling Rapalla type lures, reef drop-offs and offshore structures



It does have many similarities to the tunas though in some respects it differs considerably. Teeth for example. The reason the dogtooth tuna is called as such are its relatively large widely spaced Conical teeth.

Although not considered a big game fishing water body, the Red Sea is "active" almost year round, making it one of the most interesting fishing destinations on the planet; especially if compared to other, more "seasonal" destinations. Relatively calm, diversity of species, rich bottom structures, and the warm climate contribute to this and make fishing in Egypt such an enjoyable experience.

**So you think you know
your Fish**

Name this Fish?
Answer next month





As a member of Peninsula Salt Water Sport Fisherman's Association,
a BoatU.S. Cooperating Group, you are invited to **become a BoatU.S. Member**
at a special rate:

\$15 Boat U.S. Membership Dues and 10% off Water Towing Services

BOAT U.S. COOP GROUP #:

Contact Gary Donaldson at
tarpon05@gmail.com
For the PSWSFA Coop group #

NEW MEMBERS

Sign up online at **BoatUS.com/Join**
(enter your BoatU.S. Coop Group #
on the first page of the application)

CURRENT MEMBERS

Not receiving the discount? Email
Membership@BoatUS.com

MEMBERSHIP BENEFITS INCLUDE:

- 24/7 Dispatch to over 600 towboats in 300+ ports nationwide
- Marine insurance for boaters with 24/7 claims service
- Discounts on fuel, slips, repairs & more at over 1,200 boating businesses nationwide
- Subscription to *BoatU.S. Magazine* – 6 issues per year

Visit **BoatUS.com/Membership** to learn about all benefits
and services offered to BoatU.S. Members.

MB411 8/17



INSURANCE



DISCOUNTS



MAGAZINE



SAFETY



ADVOCACY



TOWING



TRAILER ASSIST



DISCOUNTS

Directions to PSWSFA Meeting

Former St Mark's Episcopal Church

From 64 (either direction) take the Mercury Blvd exit towards the James River Bridge (West) stay in the right hand lane and turn right at the light onto Todds Lane. Go past Zaxby's chicken about 400 ft and the driveway to the church is on the right. The original St, Mark's sign is still on the lawn just short of the driveway.

If you come to the traffic light at the intersection of Cunningham you went to far. Turn right on Cunningham and look for the Cunningham entrance to the church (500ft). If it is blocked you will need to do a U-turn on Cunningham and go left onto Todds Lane.

From Mercury, the church driveway is just short of the Bercuese Funeral home entrance or just after if coming from Cunningham.

WHAT'S UP NEXT & BEYOND

21 June 2022 - General members Meeting

19 July 2022 - General members meeting. Will also be presenting last years plaques and awards.

