



The PSWSFA is a family-oriented fishing club established in 1957. Our meetings are held on the 3rd Tuesday of each month (March-Dec.) at 7:00pm. Starting in March 2020 we'll be meeting at the Seaford Womens Club at 100 Club Way, Seaford (off Seaford Road). The meetings are free and open to the public and are a great place to swap stories with other local fishermen, find new fishing partners and plan trips together. We have raffles with nice giveaways-donated by local businesses. Each month we have speakers sharing their experience on one of the local fisheries. Come join us and get to know some of the other fishermen in your local area. Directions can be found at <https://pswsfa.com/services/>

Greetings, this is Mike Frielingsdorf the new editor for the PSWSFA Chumline. As you can see I've made a few changes.

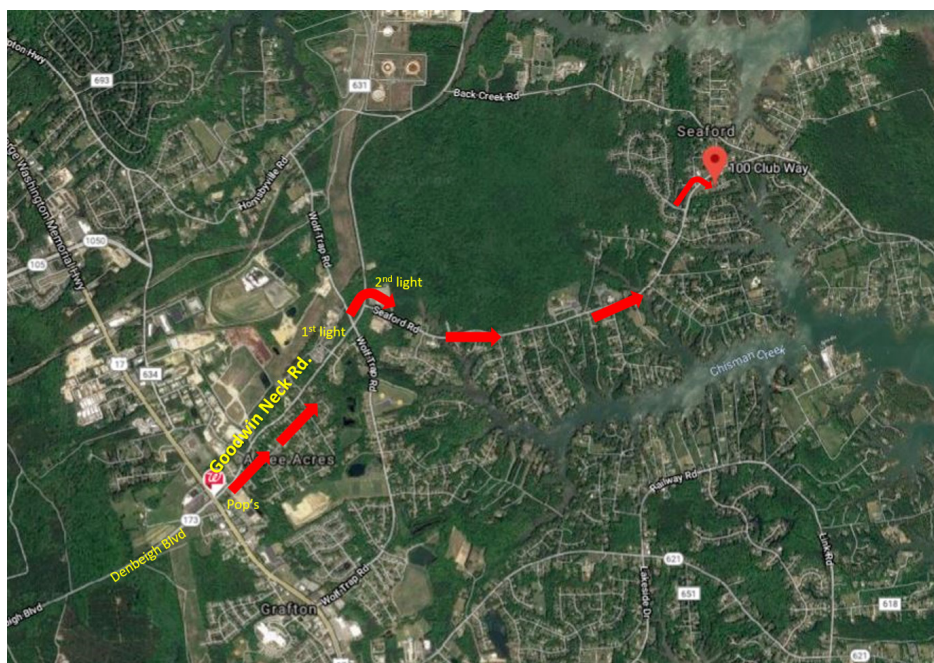
I've had few boats over the years starting with a 16ft 1959 MFG with a 28 hp Johnson back in 1965. I ran it all over the canals and bays of the south shore of Long Island. I still had it when I was stationed with the Air Force in New Hampshire from 1976 to 1980, While there I bought a new 18ft Manatee center console with a 115 Evenrude. I only had it for one summer when I got orders to England from Nov 80 to Nov 83. My dad sold it while I was gone.

When I returned I was stationed here at Langley AFB but I didn't get another boat until the Spring of 1990 when I picked up a new 20ft Wellcraft Cuddy with a 175 Johnson. What a great boat. I ended up selling it in January 1993 however, after figuring out I could pay for the new house I just bought or a boat, and the boat lost. I've been boatless ever since.

Most of my fishing now is done from shore at Fort Eustis targeting whatever is biting; Drum, Carp, Striped bass, Lady Fish, Trout, White Perch, Fluke and the occasional Large Mouth bass.

I've put directions to our new meeting place at the **Seaford Womens Club** here so everyone has a good idea where it is located. The address is **100 Club Way**, off Seaford Rd. in **Seaford**.

From Rt 17 in Yorktown turn onto Goodwin Neck Rd. (Denbigh Blvd turns into Goodwin Neck when it passes over Rt 17) Go 1.2 miles turn right on Seaford Rd (2nd Light - 400ft past 1st light at Wolftrap) then go 2 miles and turn right onto Club Way (unpaved) (300 ft past Zion United Methodist Church). Once on Club Way follow signs to the women's club. (*Chumline Best viewed using Acrobat Reader*)



**Attention all members:** This is a reminder that all memberships will now expire on the last day of February of each year. Forms are available from Johnny Boyd (membership committee). At the December 2019 board meeting the board voted to increase the dues by \$10. As before, the \$40 is per individual or family. We haven't had a dues increase in pretty much forever and this will help the club pay for the increased cost of our meeting space as well as supporting events like the picnic, awards banquet, and fishing related events, organizations, and tournaments.

## PSWSFA 2020 MEMBERSHIP

**Dues: \$40 per year for entire family\***  
**(March through February - not prorated throughout the year)**

Name: \_\_\_\_\_ Spouse: \_\_\_\_\_

Dependents Names and ages

1) \_\_\_\_\_ 4) \_\_\_\_\_  
2) \_\_\_\_\_ 5) \_\_\_\_\_  
3) \_\_\_\_\_ 6) \_\_\_\_\_

\*Family must be living with you

Address: \_\_\_\_\_

City: \_\_\_\_\_ State: \_\_\_\_\_ Zip: \_\_\_\_\_ Home Phone: \_\_\_\_\_

E-Mail: \_\_\_\_\_ Cell Phone: \_\_\_\_\_

Boat Name/Call Sign: \_\_\_\_\_

Total number in your membership: \_\_\_\_\_

Send this form with a check (payable to PSWSFA) to:

PSWSFA  
P.O. Box 519  
Newport News, VA 23605

Please check one of the following:

☐ Yes, please add my name to the club membership book  
☐ No, please do not publish my information

## A Scam Alert from the Gloucester County Sheriff's Office

January 10 at 11:07 AM ·

The Gloucester County Sheriff's Office wants to alert the Gloucester Community to a possible phishing scam recently reported to the Sheriff's Office by a local citizen. In the reported incident, scammers have created an email inviting a response by the recipient to claim a monetary prize package after a fee is paid. Additionally, the scammers, to appear official or authentic, have acquired a photo of Sheriff Warren, in uniform, which sits at the top of the email communication, and also, imbedded within the email's text-official language from our agency "Mission Statement" which is posted on our social media page and agency website. Furthermore, the name "Jake Roberts" listed as the recipient's contact agent is most likely fictitious and in no way affiliated with this agency.

Should you receive an email of this nature, please trust that it is not a legitimate communication from Sheriff Warren or any of his agents. Neither Sheriff Warren, his staff or deputies, or any agency or institution associated with his office will ever communicate in this manner with the community requesting payments for prizes from our citizens. Also, please do not attempt to respond or communicate with the scammers in any capacity and report it to our office immediately.

Attached as an image to this post are the original email received by the reporting citizen, and 10 Tips for recognizing and reporting phishing scams produced by the Federal Trade Commission. Please review these tips, and always proceed with caution online.



## 2019 ANNUAL AWARDS BANQUET

SATURDAY, FEBRUARY 29, 2020

**Raffle  
&  
Cash Bar**

Paradise Ocean Club  
509 Fenwick Rd  
Hampton, VA 23651  
6:00pm – 9:00pm

**The old Fort Monroe  
Officers Club**

Cash Bar: 6:00pm – 9:00pm  
Hors d'oeuvres: 6:00pm – 7:00pm  
Dinner: 7:00pm – 8:00pm  
Awards and Raffle to Follow

**Limited to the first 100 RSVPs**

Please Print

Member: \_\_\_\_\_

Spouse/Significant Other/1 Guest \_\_\_\_\_

Name of Guest/s of Member \_\_\_\_\_

Children: \_\_\_\_\_  
\_\_\_\_\_

How Many:

\$20.00/Member: \_\_\_\_\_ \$10.00/Children (10 and Under) \_\_\_\_\_

\$41.00/Guest: \_\_\_\_\_ \$20.00/ Guest Child (10 and under) \_\_\_\_\_

**Hor d'oeuvres:** Fruit Platter, Boneless Chicken Bites. **Buffet includes:** Chicken Marsala, Broiled Flounder, 6 oz. Flat Iron Steak, Green Beans, Roasted Red Potatoes, Mixed Greens Salad, Dinner Rolls, Assorted Mini Desserts.

Total Number Attending \_\_\_\_\_ Amount Enclosed \$ \_\_\_\_\_

**Email address or Phone No. for Confirmation:** \_\_\_\_\_

Mail this form along with check to "PSWSFA" postmarked by Feb. 10<sup>th</sup> to Guarantee dinner:

To: Cristina Grice  
P.O. Box 32  
Gwynn, VA 23066

Questions: Call Cristina at 757-869-7238  
Please do not call in your reservation.  
All reservations need to be in writing



# New Way of Managing Menhaden, a Critical Forage Fish, Could Help Species Rebound

Groundbreaking science- and ecosystem-based measures could be adopted soon.

Article from PEW, January 30, 2020

By: [Joseph Gordon](#) & Aaron Kornbluth Topics: [Ocean Conservation](#) Projects: [Conserving Marine Life in the United States](#)

*In early February, the regulatory body that sets catch limits for menhaden—the country’s second-most-caught fish—will consider adopting a new way to manage the species, which is valued prey to wildlife. This is the first of three articles explaining why menhaden, and this potentially revolutionary decision, matter.*

It’s a common scene along the U.S. East and Gulf coasts: a still patch of ocean, yards from the shore, broken suddenly by a roiling commotion. It’s a school of menhaden—a critical but little-known forage fish—darting and jumping to escape predators from below as seabirds seize the opportunity to dive from above.

Menhaden may be the most important fish you’ve never heard about. They’re not only prey for iconic wildlife—from humpback whales and dolphins to striped bass and ospreys—but they also are the East and Gulf coasts’ most-caught fish—and the second-highest catch in the U.S. behind Alaskan pollock.

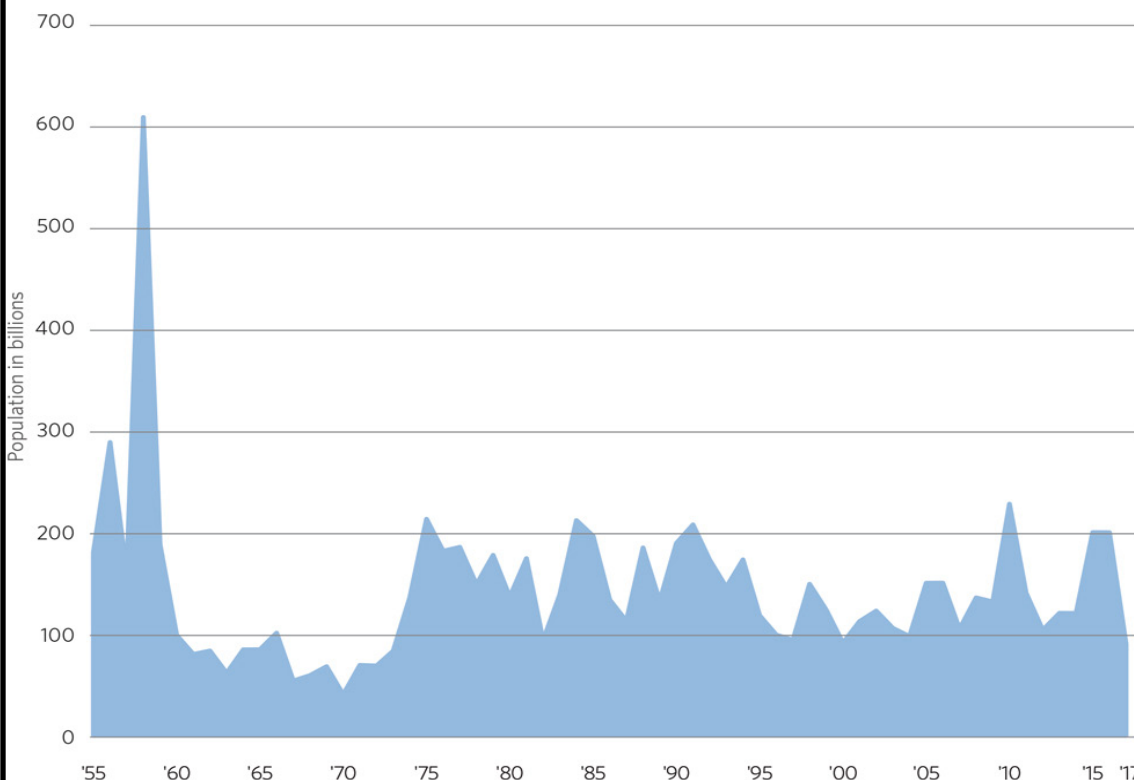
In the coming weeks, the management body overseeing Atlantic menhaden will decide whether to adopt a more modern management system, which would have long-term consequences for the health of this species, and much of the marine ecosystem.

In the coming weeks, the management body overseeing Atlantic menhaden will decide whether to adopt a more modern management system, which would have long-term consequences for the health of this species, and much of the marine ecosystem.

## 200 years of menhaden fishing: A short recap

### Careful Management Can Avert Menhaden Population Collapse

Population trend, 1955-2017



Source: SEDAR 69 Atlantic Menhaden Benchmark Stock Assessment Report (2020), <http://sedarweb.org/sedar-69-atlantic-menhaden-benchmark-stock-assessment-report>

© 2020 The Pew Charitable Trusts

Commercial fishermen have pursued menhaden in earnest since the early 1800s, largely for the same reason they hunted whales: as a source for lamp oil. Menhaden also were ground up to fertilize agricultural fields, a precursor to popular 20th-century uses as food for livestock, farmed fish, and pets and as essential ingredients in oil-based paints, cosmetics, fish oil supplements, and health foods. As overfishing reduced populations of other forage fish such as mackerel and herring, menhaden became increasingly important bait for lobster and crab fisheries.

*Continued on Pg 5*

## ***Decline of a menhaden predator triggers changes***

For the first roughly two centuries of intensive menhaden fishing on the East Coast, coastwide catch limits didn't exist. Over the past century, some states banned commercial fishing for menhaden, while others did nothing. In the 1980s, with the menhaden population and range shrinking, commercial fishing became increasingly concentrated, and striped bass, which prefer menhaden as prey, suffered significant declines. This led to a moratorium on fishing for striped bass, curtailing an economically and culturally important activity. The dearth of menhaden drove predators to target other species, such as juvenile weakfish—a popular gamefish once it reaches adulthood. This underscored why menhaden matter: Their scarcity can also threaten other fish, including prized predators.



Menhaden, a key forage fish for predators on the U.S. East Coast and one of the country's most-caught species, may soon benefit from a modern, science-based management system.

The menhaden and striped bass declines prompted the first interstate catch limit on menhaden in 2006. However, that measure applied only to the Chesapeake Bay, menhaden's largest nursery. After the Atlantic States Marine Fisheries Commission—the body that manages menhaden catch—in 2013 finally adopted a 25 percent reduction from recent catch levels for the entire East Coast, menhaden numbers increased noticeably for several years. Since that decision, many fisheries scientists, conservation organizations, and coastal businesses as well as hundreds of thousands of individuals have called for the commission to ensure that enough menhaden stay in the water to feed wildlife and support commercial and recreational fishing, ecotourism such as whale- and bird-watching, and other industries that boost coastal economies.

## ***A remarkable management transformation is underway***

The Atlantic States Marine Fisheries Commission has long recognized that menhaden play a critical role in the wider marine ecosystem. For the past several years, the commission has resisted pressure to increase catch levels and promoted a new way to set catch limits—one that would ensure that important predators have enough to eat.

Last week, the commission released new peer-reviewed models and formulas—called ecological reference points—that can be used when managing menhaden fishing. These reference points integrate estimates of how much menhaden some key predators need and set catch limits that provide for those needs. On Feb. 5, the commission will consider adopting them. Doing so would complete a remarkable transformation from no coastwide catch limits a decade ago to arguably the nation's premier ecosystem-based fisheries management system.

Our next analysis will explore how this approach differs from the old way of managing fish as single, isolated populations.

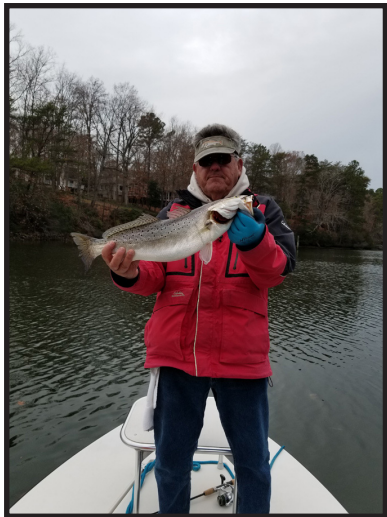
Joseph Gordon is a project director and Aaron Kornbluth is an officer with The Pew Charitable Trusts' campaign to protect marine life on the U.S. East Coast.







December and January went pretty well for those that went out. In December Stan Simmerman and Keith Nuttall managed a limit of nice Specks up to 22 inches. They also tagged and released several trout with nothing below 15 1/2 inches. Stan also caught a citation trout during the trip. In January Stan and Daily Vandergriff went for striped bass off Cape Charles and did pretty well, 32 and a 48in.



On 4 January Ken Neill went out with Charles Southall, David Brabrand and Gabe Sava on Charles' boat Special Kate over to Cape Charles for some catch and release Rockfish. While they only caught one, it was a nice one and was released in good shape. Pictures below.



### Monthly Tournament Awards - December

Species	Minimum Size	Angler	Length
Albacore Tuna	35 inches		
Amberjack	40 inches		
Big Eye Tuna	40 Inches		
Black Belly Rose Fish	14 inches		
Black Drum	40 inches		
Blackfin Tuna	20 inches		
Bluefin Tuna	45 inches		
Bluefish	25 inches	<b>Rick Wineman</b>	<b>37"</b>
Blue Line Tilefish	20 inches		
Blue Marlin	Release		
Channel Bass	40 inches		
Cobia	40 inches		
Croaker	16 inches		
Dolphin	35 inches		
False Albacore	25 inches		
Flounder	22 inches		
Golden Tilefish	30 inches		
Gray Trout	24 inches		
Grouper	16 inches		
Jack Crevelle	36 inches		
King Mackerel	35 inches		
Pompano	12 inches		
Sailfish	Release		
Sea Bass	15 inches	<b>Chris Boyce</b>	<b>24"</b>
Shark	60 inches		
Sheepshead	15 inches		
Snapper	12 inches	<b>Stan Simmerman</b>	<b>18"</b>
Spadefish	18 inches		
Spanish Mackerel	20 inches		
Spearfish	Release		
Speckled Trout	21 inches	<b>Stan Simmerman</b>	<b>24"</b>
Spot	8 inches		
Striped Bass	36 inches	<b>Wally Veal</b>	<b>50"</b>
Swordfish	Release		
Tarpon	Release		
Tautog	18 inches		
Triggerfish	15 inches	<b>Stan Simmerman</b>	<b>19 1/2"</b>
Wahoo	40 inches		
White Marlin	Release		
Whiting (Roundhead)	14 inches		
Yellowfin Tuna	35 inches		

MAIL ENTRY FORMS TO:

MR. MILTON HUDGINS

1894 KATIE LANE

HAYES, VA 23072

(e-mail: [judygee03@gmail.com](mailto:judygee03@gmail.com))

#### Deadline for turning in your 2020 entry forms:

Month of Entry	Deadline (Brd Mtg)	Month	Deadline (Brd Mtg)
January	11 Feb	July	11 Aug
February	10 Mar	August	8 Sep
March	14 Apr	September	13 Oct
April	12 May	October	10 Nov
May	9 Jun	November	8 Dec
June	14 Jul	December	12 Jan 21



# PSWSFA 2020 TOURNAMENTS

## FOR ALL TOURNAMENTS

You must register prior to fishing and use the official monthly form filled out by an official weigh station with time, date and weight of fish, & weight master's signature to verify catch. All Club Tournaments will have Awards for the first 3 places.

Questions Contact: Tournament Director Rick Wineman: [rick@getanetsportfishing.com](mailto:rick@getanetsportfishing.com) or 757-268-1539.

There are currently no tournaments scheduled yet for 2020.  
But when there are I'll post them here.

## News from VMRC

Fish on! The 2020 February recreational black sea bass fishing season will start February 1st and end on February 29th, 2020. We want to remind all anglers that a recreational black sea bass permit is required ONLY for the captain or operator of the vessel and that it is their responsibility to report all trips taken and black sea bass caught or released during the 2020 February recreational black sea bass season. For more details, see the following link.

[https://mrc.virginia.gov/Notices/2020/BSB\\_February\\_season\\_notice\\_2020.pdf](https://mrc.virginia.gov/Notices/2020/BSB_February_season_notice_2020.pdf)

**Great Bridge Fisherman's Assoc. GBFA**

## 11<sup>th</sup> ANNUAL Fishing Flea Market

SPONSORED BY **Moody's WATER CONDITIONERS, LLC**

**Free Raffles!**  
50/50  
Best Locations Go Fast. Register Now!  
Come buy, meet, greet, and eat !!

- New & Used Rod & Reels
- Fresh & Saltwater Gear
- Custom Lures
- A Variety of Boats & Trailers
- Hot Food & Cold Refreshments
- Admission \$3 (Children 12 & Under Are Free)
- **FREE PARKING**  
Over 3,000 customers in the past year

**March 14, 2020**  
**8:00 am - 2:30 pm**  
Chesapeake Conference Center  
700 Conference Center Drive  
Chesapeake VA 23320

Butch - lbpocean@aol.com 757-287-0330  
George - geva1963@cox.net 757-421-7333  
Joe - mysteri2@cox.net 757-685-6823

You are invited to visit or join the best fishing club in Tidewater. Each month the club has a speaker to present an informative program on various local fishing topics. Check us out at [www.fishgbfa.com](http://www.fishgbfa.com)  
Or Visit facebook.com/GreatBridgeFishermansAssociation

Benefits include:

- Monthly Newsletter
- Annual Awards Banquet
- Fishing Tournaments (Boat & Surf)
- Special Events such as Oyster Roasts & Picnics
- Philanthropic Events to Benefit Organizations such as Hope House, Wish-A-Fish, & Sentara Nursing Home

**2020 VENDORS FISHING FLEA MARKET AGREEMENT**

I will participate in the Great Bridge Fisherman's Association 11<sup>th</sup> Annual Anniversary Fishing Flea Market on Saturday March 14, 2020 at the Chesapeake Conference Center, 700 Conference Center Dr. Chesapeake Virginia 23320. I agree and understand the following:

Saltwater) New, used, custom and home-made equipment including rods, reels, lures, All merchandise must be geared towards the Fisherman/Outdoor needs. Fly, Fresh Water Tackle, storage boxes, electric or gas motors, boating gear and electronics are acceptable. Boats are available to be displayed at \$3.00 per foot. The staff reserves the right to request the Vendor remove any merchandise deemed unacceptable during this event.

The hours of operation on Saturday are from 8:00 AM - 2:30 PM. Vendors will be allowed to set up after 4:00 PM on Friday and starting at 5:30 AM on Saturday morning. Vendors must vacate the building by 4:00 PM on Saturday. Locations are determined by the staff and will be assigned to each Vendor when registering. Only booths are guaranteed, not the location. There will be a limit to 3 booths per Vendor. All Vendors, need to set up before 7:00 AM. After 7 AM, booths will be reassigned as needed. After unloading merchandise, Vendors must move their vehicles to assigned area. Security will be provided overnight Friday. We encourage all Vendors to set up Friday afternoon or Friday night up to 10 PM. All payments, once deposited are non-refundable if a Vendor cancels. The GBFA and the Flea Market staff are not responsible for any loss or damage to Vendors merchandise

Two admission tickets per Vendor. This will be strictly enforced. Vendors with more than two tables will be discussed.

ATM machine will be available.

**GREAT BRIDGE FISHERMAN'S ASSOCIATION FLEA MARKET APPLICATION**

NAME \_\_\_\_\_  
EMAIL \_\_\_\_\_ ADDRESS \_\_\_\_\_  
PHONE \_\_\_\_\_

PLEASE RESERVE \_\_\_\_\_ BOOTHS, TOTAL AMOUNT \_\_\_\_\_  
\$60.00 PER TABLE  
BOAT INFORMATION: \$3.00 Per Foot ENCLOSED  
SIGNATURE \_\_\_\_\_

PLEASE RETURN TO:  
GBFA  
P.O. BOX 15742  
CHESAPEAKE VA 23322  
FOR ADDITIONAL INFORMATION CONTACT: BUTCH PIERCE/ 757-287-0330





## Fishing Around the World

### ***Saltwater Fishing in New Zealand***

New Zealand, an anglers paradise, was put on the big-game fishing map after a visit by legendary American writer Zane Grey in the 1920's. New Zealand saltwater fishing catches vary by location, from tuna and shark around Fiordland, to snapper and kingfish in the Marlborough Sounds.

The far north, around the Bay of Islands has great New Zealand saltwater fishing, ranging from marlin, kingfish and sporting kahawai, with terakihi available around most of the New Zealand coastline. Kahawai, an express speedster and leaper, when hooked will take with abandon a fly cast from a boat or river mouth. Other fish species such as skipjack, tuna and trevally can give spectacular sport too.

In the 1980's the New Zealand Government moved to ban commercial long lining and to institute a moratorium on commercial marlin fishing. With the enlightened approach and controls, game fishing surged back and, in 1995, the Bay of Islands recorded its best ever season in 70 years.

Saltwater fishing in New Zealand may be good in the winter when still, sunny days follow a crisp frost at first light, but light tackle saltwater fishing in New Zealand is usually at its best in summer and autumn. This is when warmer water and a profusion of bait fish entice feeding schools of larger fish inshore. There are no closed season restrictions for New Zealand saltwater fishing and no licence is required.

#### **Here is the best time to try and catch them:**

Black marlin - comparatively rare, best sea fishing in New Zealand off the East Coast north of East Cape from January to April.

Broadbill - a rare but prized catch, widespread in midwater and usually offshore, best fishing from November to March.

Hammerhead shark - regularly enters New Zealand's northern waters in summer. Other sharks such as bronze whalers and tiger can also be caught.

Mako shark - ranges from north to the bottom of the South Island but most abundant in the North Island, particularly the far north. With a streamlined body, it is a powerful fighter and spectacular leaper, best sea fishing in New Zealand in summer.

Pacific blue marlin - more rare in New Zealand, best sea fishing in New Zealand off the East Coast north of East Cape from February to April.

Striped marlin - New Zealand has reputedly the largest marlin in the world and many world records to prove it. Best fishing off the East Coast north of East Cape from December to June.

Thresher shark - a prized game fish most common from East Cape northwards but can range as far south as Cook Strait.

Yellowfin tuna - powerful fighter mainly on the East Coast north of East Cape. Whakatane is a noted yellowfin tuna base, best fishing from December to April.

Yellowtail - known in New Zealand as kingfish, ranges from North Island to northern South Island and sometimes further south. A powerful fighter reaching top weight of over 50 kilograms (120 pounds). Can be taken by land-based game fishing. Fishing all year round in the north, but mainly November to May in the Marlborough Sounds.

In established sport fishing bases, such as the Bay of Islands, Mayor Island, Whakatane, Tutukaka, near Whangarei and Tauranga, charters are readily available, supplying equipment, tackle, bait and refreshments.

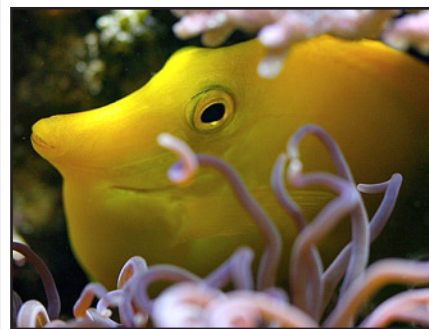
Both day and overnight trips can be arranged, charters range from NZ\$700 to \$1000 a day. Charter trips have also been introduced out of Milford Sound in Fiordland, the Marlborough Sounds (Havelock) and Kaikoura regions of the South Island. North Island charters are also available from Napier, Gisborne and New Plymouth.

Click here to view tourism operators for [saltwater fishing in New Zealand](#).

### **So you think you know Piscis (Fish)**

Can you name this one?

Answer next month





The Virginia Institute of Marine Science and its federal partners offer a wide variety of free public programs, both on the VIMS campus in Gloucester Point and at venues throughout Hampton Roads and the lower Chesapeake Bay region.

#### After Hours Lecture Series

This monthly series of public lectures by scientists from VIMS and elsewhere explores hot issues facing the Chesapeake Bay and the ocean. Learn more and register [here](#).

#### Discovery Labs

Discovery Labs are free, family-friendly programs provided each month by the [Chesapeake Bay National Estuarine Research Reserve \(CBNERR\)](#) at VIMS. Designed with elementary-aged youth and their parents in mind, each lab focuses on a different topic related to the Chesapeake Bay and our local environment and includes exhibits, demonstrations, and hands-on activities as well as a short presentation by a VIMS scientist. For information about upcoming labs and to register for a lab, visit our [events calendar](#).

#### Marine Science Day

VIMS' annual open house is a fun-filled event for the whole family. Join us in Gloucester Point for exhibits, children's activities, seining, lab tours, seafood cooking demonstrations, mini-lectures, and more.

#### Tours

Guided tours of VIMS are offered to the public from 10:00 AM – 12:00 PM on select week days each month. During these 2-hour guided tours you will receive an overview of VIMS, a guided tour of our Visitors Center, and you will visit two of our research laboratories where you will talk with our scientists. Each date offers visits to different laboratories—so you're welcome to join us for more than one tour! Tours are designed for adults. Children must be at least 9 years old to attend. Space is limited and registration must be completed at least two days in advance. For tour dates and information and to register for an upcoming tour, visit our [events calendar](#).

**Groups of 12 or more may schedule a private tour.** Visit our [Group Tours](#) page to learn more about private tours.

#### A Scientist Walks Into A Bar...

Join us at a local tavern for good food, good times, and good information as a VIMS scientist initiates a casual conversation on a relevant environmental topic. [Visit our events calendar](#) for details and upcoming programs.

#### Speakers Bureau

VIMS scientists are available to speak to your club, business, community organization, school, or other venue. Visit our [Speakers Bureau page](#) to learn more.

#### Seafood Symposium

The Chefs' Seafood Symposium is an annual educational program for culinary professionals, culinary students, and representatives from the seafood industry and related businesses. Participants leave with information, resources, and recipes to help them make more informed seafood choices as well as tastier dishes!

#### Technical Training

VIMS offers several programs designed to meet the needs of Virginia's coastal decision-makers. The Center for Coastal Resources Management (CCRM) at VIMS offers [Tidal Wetlands Workshops](#) in the spring and fall for members of citizen Wetlands Boards. The Chesapeake Bay National Estuarine Research Reserve (CBNERRVA) at VIMS offers a [Coastal Training Program](#) that promotes science-based decision-making and targets identified training needs.

## EVENTS

### Eastern Shore Laboratory Seminar: Ghost Forests of the Chesapeake Bay

Wednesday, February 5th 7:30 pm

### VIMS Public Tour

Friday, February 7th 10:00 am - 12:00pm

### Discovery Lab - Fossils

Tuesday, February 18th 6:00 pm - 8:00pm

### Public Lecture in Kilmarnock: The R/V Virginia: A Nod to the Past-An Eye to the Future

Sunday, February 23rd 2:00 pm - 3:00pm

### Discovery Lab - Mollusks

Tuesday, March 24th 6:00 pm - 8:00pm





**BoatUS.com**  
**800-395-2628**

As a member of \_\_\_\_\_ Peninsula Salt Water Sport Fisherman's Association \_\_\_\_\_,  
A BoatU.S. Cooperating Group, you are invited to **become a BoatU.S. Member**  
at a special discounted rate:

### **50% OFF BOATU.S. MEMBERSHIP**

Regularly \$30/year — You pay \$15!

**BOATU.S. COOP #:** \_\_\_\_\_

Upgrade to Unlimited Water and Road Towing so we pay your bill!

#### **NEW MEMBERS**

Sign up online at **BoatUS.com/join**  
or call **800-395-2628**  
Mention your BoatU.S. Coop #

#### **CURRENT MEMBERS**

Not receiving the discount? Email  
**Membership@BoatUS.com**  
or call **800-395-2628**

### **MEMBERSHIP BENEFITS INCLUDE:**

- 24/7 Dispatch to over 600 towboats in 300+ ports nationwide
- Boat insurance from boating experts with 24/7 claims service
- Savings with local businesses and national partners
- Highest level of shopping rewards at West Marine
- Subscription to award winning BoatU.S. Magazine

**For a complete list of the 25+ benefits of Membership or to learn more about BoatUS, visit BoatUS.com or call 800-395-2628.**



INSURANCE



DISCOUNTS



MAGAZINE



SAFETY



ADVOCACY



TOWING



TRAILER ASSIST



DISCOUNTS

## Directions to PSWSFA Meeting Location

Seaford Women's Club  
100 Club Way  
Seaford (Yorktown) VA

From Rt 17 in Yorktown turn onto Goodwin Neck Rd. (Denbigh Blvd turns into Goodwin Neck when it passes over Rt 17) Go 1.2 miles turn right on Seaford Rd (2nd Light - 400ft past 1st light at Wolftrap) then go 2 miles and turn right onto Club Way (unpaved) (300 ft past Zion United Methodist Church). Once on Club Way follow signs to women's club.



## WHAT'S UP NEXT & BEYOND

### **February Board Meeting**

11 February 2020  
at Joe and Mimas  
5742 George Washington Memorial Hwy,  
Yorktown, VA 23692 (Rt 17) at 7:00pm,  
All are welcome.  
Show up at 6:00pm if you want to eat.



### **March PSWSFA Meeting**

17 March 2020, 7:00pm  
Seaford Womens Club



### **67TH Annual Mid-Atlantic Sports & Boat Show 7-9 Feb 2020**

Time: 2/7/20: 12 PM - 8 PM ;2/8/20: 10 AM - 8  
PM; 2/9/20: 10 AM - 5 PM



**World of Pets Expo  
21-23 February 2020  
At the Hampton  
Convention Center**

PENINSULA SALT WATER SPORTS FISHERMAN'S ASSOC.  
P.O. Box 5194  
NEWPORT NEWS, VA 23605

