

## PENINSULA

Salt Water  
Sport  
Fisherman's  
Association

# CHUMLINE

APRIL 2022

Supporting Hampton Roads Fisherman since 1957

The PSWSFA is a family-oriented fishing club established in 1957. Our meetings are held on the 3rd Tuesday of each month (March-Dec.) at 7:00pm. The meetings are free and open to the public and are a great place to swap stories with other local fishermen, find new fishing partners and plan trips together. We have raffles with nice giveaways-donated by local businesses plus prizes we buy ourselves. Each month we have speakers sharing their experience on one of the local fisheries. Come join us and get to know some of the other fishermen in your local area. Directions on last page.

**Next meeting**  
**19 Apr 2022 7:00pm**

I realize that the vast majority of folks getting the Chumline are not active members of the club. As a club however, we depend heavily on your support to keep the club viable and functioning. Our members are part of the greater Chesapeake bay fishing community with some on various boards and advisory committees that set and recommend current and future fishing regulations and quotas. What we have to say is taken seriously by those setting the rules.

If you haven't been a paying member in a while or ever, we ask that you join us at our next meeting a see what we are all about. There is a lot to be learned from face-to-face conversations with your fellow fisherman.

Our web site has been updated with more improvement to come. All of the back Chumlines are available as well at: [www.pswsfa.com](http://www.pswsfa.com)

The raffle for the rod and reel combo will take place at this meeting. There may be a few left to purchase before the drawing.

Stay well - Mike the Editor

## FROM THE PRESIDENT

Greetings everyone! The spring fishing season is taking off quickly in the Chesapeake Bay and surrounding waters. Speckled trout are showing up in good numbers along with puppy drum in the same basic areas. Large reds have made their way north and several have been caught recently, along with a few black drum. The tog bite has been good on the nearshore and offshore wrecks and the tog action is picking up in the bay as the waters continue to warm. I have recently seen a few nice flounder reports as well. Bottom line is it is time to get the boats in the water and catch a few fish.

The club is raffling off a nice Shimano rod and spinning reel combination loaded with 30lb braid. This combo would cost you \$650.00 to purchase. It can handle any fish in the bay and many species of offshore gamefish as it gives you 27lbs of drag if you need it. Second place will receive a Toadfish 2500 spinning reel. We are only selling 400 tickets and they are almost gone. They are \$5.00 each. See any member and they can get you in touch with one of the last remaining tickets. The raffle will be

held at the monthly club meeting next week and we are going to try to broadcast it live on Instagram @ PSWSFA. The meeting is at 7pm at St Mark's church in Hampton. We will also have Stan Simmerman speaking to us on speckled trout fishing. Come on out and join us.

The club will be holding its Bishop's trophy red drum tournament during the month of May. Get signed up before you fish. You can sign up by contacting Rick Wineman or any club officer. Please make sure your dues are up to date-as it is a requirement to participate in any club tournament. The cost of the tournament is \$20.00 for club members and \$30.00 for non-members fishing with a club member. You can see Johnny Boyd to get signed up for the year at the meeting as well. We will be announcing other club tournaments for the year. This is your club and we would welcome any suggestions any of you have for a tournament you might be interested in participating in with other club members.

Tight Lines,  
Danny Forehand, President

## CONTAINER SHIP STILL AGROUND OUTSIDE PATAPSCO RIVER

A nearly 1,100-foot-long container ship ran aground Sunday night on its way out of the Port of Baltimore, and as of Wednesday morning the ship was still stuck amid careful salvage planning and pollution monitoring.

Coast Guard Petty Officer First Class Stephen Lehmann tells Bay Bulletin the container ship Ever Forward ran aground before 11 p.m. Sunday. No one was injured. The Evergreen Marine Corp. (based in Hong Kong) ship was headed for Norfolk when it got stuck near the Craighill Channel. Ever Forward was built in 2020, is 1,095 feet long, and reportedly draws about 42.6 feet of water. In the area where the ship is sitting, NOAA charts indicate 24 feet of water at Mean Low Low Water.

Annapolis School of Seamanship (ASOS), CBM's sister company, captured video of the ship Monday afternoon from the water. You can see Ever Forward is loaded to the top with containers carrying an assortment of general cargo. ASOS Vice President Capt. Matt Benhoff shows where the ship is in relation to the red channel marker.

Lehmann tells us the vessel is outside the navigable channel. The Bay pilot aboard had control of the ship at the time it ran aground. Investigators are still looking at whether it was a mechanical issue or operator error that caused it to leave the channel.

Based on Automatic Identification System (AIS) data, Benhoff says it appears the ship failed to turn into the designated channel, whether by mechanical or operator error.

The Coast Guard has issued a Captain of the Port order "requiring the vessel's crew to conduct soundings of all tanks, bilges, and voids every four hours to monitor potential pollution and report any noticeable change in stability, draft readings, vessel position, or signs of an oil discharge."

USCG is also enforcing a 500-yard safety zone around the Ever Forward to ensure the safety of those on board and on the assisting vessels during ongoing salvage operations.

Lehmann says the Coast Guard is working on a plan to safely refloat the ship and is also investigating the cause of the incident.

Evergreen made international headlines with another of its ships—the supersized container ship Ever Given, which blocked the Suez Canal a year ago, bringing worldwide shipping trade to a grinding halt.

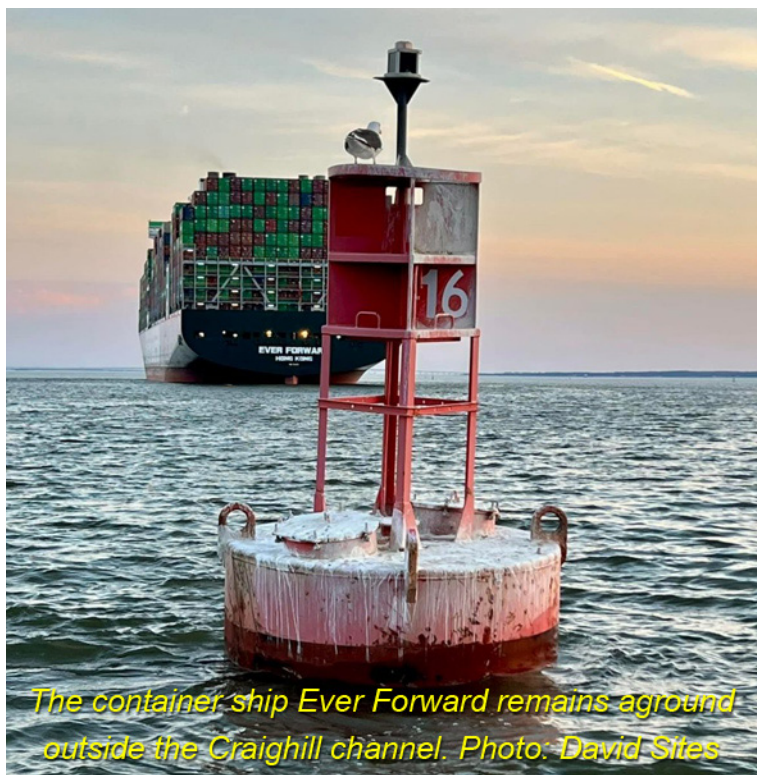
### 6 April Update:

The Coast Guard is hoping the third time's the charm for the container ship lodged more than 20 feet into the mud outside the shipping channel on the way out of Baltimore. They're staging cranes on barges to remove containers from the 1,095-foot-long ship.

In its third week stuck on the bottom of the Chesapeake Bay, Ever Forward finds itself in an unusual economic situation. A rarely-used concept known as "General Average" will put the owners of the cargo in the containers on the hook for a portion of salvage costs.

**Recent VIDEO Link from 12 April:** <https://youtu.be/Q3WAWeNbDLo>

-Meg Walburn Viviano





## VA. EXPERTS INVESTIGATE SPATE OF RECENT DOLPHIN STRANDINGS

. Dolphins are one of the Bay region's most fun marine animals to spot. But a disturbing trend of strandings in the Virginia portion of the Bay has experts searching for answers.

There have been about a dozen dolphin strandings in Virginia over the past month. The Stranding Response Team at the Virginia Aquarium and Marine Science Center in Virginia Beach is trying to find out why.

The stranded dolphins are Common dolphins, not the Atlantic bottlenose we're used to seeing most of the time in the Bay. Worldwide, the common dolphin has the largest population. Commons are smaller than the bottlenose, under 10 feet. They have a noticeable dark back, which has led to nicknames such as saddleback dolphin, and cape dolphin. Common dolphins normally stay offshore between Cape Hatteras and Canada. They are strongly associated with the Gulf Stream, which makes it more of a mystery as to how they became stranded inside the Bay.



*Members of the aquarium's Stranding Response Team work to help a stranded common dolphin in shallow water. Photo: Virginia Aquarium & Marine Science*

Since March 13, 2022, there have been 13 reports of stranded common dolphins. 11 strandings took place in the bay between Harborton and Fort Story, while two were discovered on the seaside of the Eastern Shore. Most of the stranded dolphins have been females, and they vary in age from youngsters to older adults. Some of the dolphins died before teams arrived to help them.

Mackenzie Di Nardo, Public Relations Manager at the Virginia Aquarium, reports that, "Further analyses are needed to discern a causative agent. Weather likely played a role as a strong storm rolled through the coast of Virginia prior to the event, and strandings are seen from offshore species after big weather events." Scientists at the Stranding Response Team are conducting tests on tissue samples, but it will take time to finish the tests and analyze the results. According to Di Nardo, "Several of the dolphins examined so far have had evidence of infectious processes which will take time to understand."

Di Nardo said that some of the stranded dolphins may not have been getting enough to eat. "Blood results from a sample show dehydration likely due to reduced foraging," she said. "Several of the animals have shown some combination of infectious disease, malnutrition, and increased parasite burdens."

If you see a stranded marine mammal in Virginia, you can report it to the Stranding Response Team at 757-385-7575. For more about the Stranding Response Team, and what they do, please visit [virginiaaquarium.com/research-and-conservation/stranding-response](http://virginiaaquarium.com/research-and-conservation/stranding-response).

-Kendall Osborne

# BABY GREY SEAL STRANDINGS COULD SUGGEST NEW COLONY ON MID-ATLANTIC COAST

March 25, 2022

It's not unusual to hear that the National Aquarium in Baltimore's animal rehabilitation center has admitted a new patient. The top-level facility helps several stranded sea turtles per year and occasionally a seal in distress from the Maryland and Delaware beaches.

But the newest rescue, a grey seal pup brought to the Animal Care and Rescue Center in late February, may be a sign of an important trend. The pup, so young he would still be dependent on his mother, is the third maternally-dependent grey seal admitted in recent years. The ongoing presence of these babies indicates there may be a grey seal colony, known as a rookery, established in the mid-Atlantic.



Grey seal Louis Armstrong in rehab at the Animal Care and Rescue Center. Photo: Philip Smith, National Aquarium

That would be notable since there has not been a known rookery here in years. After grey seals were nearly wiped out by mariners in the first half of the 20th century, the Marine Mammal Protection Act passed in 1972 has been helping to strengthen their numbers. With seal hunting illegal and punishable by fines or even jail time, seals can again move freely along the Eastern Seaboard.

The most recent rescued baby seal is making good progress since he was found dehydrated with infected wounds at Assateague Island National Seashore. The grey seal, nicknamed Louis Armstrong, was likely born in January, and weighed just 35 pounds when he stranded.

Louis has been treated with antibiotics for his wounds and Aquarium staff are now working with him to practice independent swimming and foraging for food, skills he will need to survive in the wild.

Grey seals stay in the rookery during breeding season, but are independent other times of year. The aquarium says if there is, indeed, a rookery nearby, we will likely see more seals like Louis in the Bay region. The aquarium offers this reminder: "Should you encounter a seal on the beach, it may not be sick, only resting. If you do see a seal, do not touch or approach it, and keep a distance of 150 feet—about the length of three school buses. Please note your location and time of day and immediately contact the National Aquarium's Stranded Animal Hotline at 410-576-3880."

NOAA will work with the National Aquarium to determine when Louis is ready for release. He'll need to be about 50 pounds, so he has plenty of fish-eating ahead of him.

-Meg Walburn Viviano



## 2022 Club Officers

### **Danny Forehand**

President

### **Milton Hudgins**

Vice President

### **Wally Veal**

Secretary

### **Christina Grice**

Treasurer

### **Charles Southall**

Corresponding Secretary

### **Stan Simmerman**

Past President

## Board of Directors

John Hunt Jr.

Ronnie Wilson

Gary Donaldson

Dave Boyce

Rick Wineman

Charles Randolph

David Agee

Mike Frielingsdorf

Richie Moore

Daily Vandergriff

Johnny Boyd

Gerald Abrams (alt)



**A**ttention all members: This is a reminder that all memberships will now expire on the last day of February of each year. Forms are available from Johnny Boyd (membership committee). At the December 2019 board meeting the board voted to increase the dues by \$10. As before, the \$40 is per individual or family. We haven't had a dues increase in pretty much forever and this will help the club pay for the increased cost of our meeting space as well as supporting events like the picnic, awards banquet, and fishing related events, organizations, and tournaments.

## **PSWSFA 2022 MEMBERSHIP**

**Dues: \$40 per year for entire family\***  
**(March through February - not prorated throughout the year)**

Name: \_\_\_\_\_ Spouse: \_\_\_\_\_

Dependents Names and ages

1) \_\_\_\_\_ 4) \_\_\_\_\_

2) \_\_\_\_\_ 5) \_\_\_\_\_

3) \_\_\_\_\_ 6) \_\_\_\_\_

\*Family must be living with you

Address: \_\_\_\_\_

City: \_\_\_\_\_ State: \_\_\_\_\_ Zip: \_\_\_\_\_ Home Phone: \_\_\_\_\_

E-Mail: \_\_\_\_\_ Cell Phone: \_\_\_\_\_

Boat Name/Call Sign: \_\_\_\_\_

Total number in your membership: \_\_\_\_\_

Send this form with a check (payable to PSWSFA) to:

PSWSFA  
P.O. Box 5194  
Newport News, VA 23605

Please check one of the following:

☐ Yes, please add my name to the club membership book  
☐ No, please do not publish my information

# Virginia Beach Fishing

## Recreational Blueline Tilefish News

### What/When:

The recreational sector for blueline tilefish in federal waters of the South Atlantic will open at **12:01 a.m., local time, on May 1, 2022, and close at 12:01 a.m., local time, on July 26, 2022.**

### Why This Closure is Happening:

The 2022 recreational catch limit for the blueline tilefish is 116,820 pounds whole weight.

The recreational sector for blueline tilefish in or from federal waters of the South Atlantic is typically open from May 1 through August 31, each year. However, if recreational landings for blueline tilefish reach or are projected to reach the recreational catch limit, NOAA Fisheries will close the recreational sector for the remainder of the fishing year.

NOAA Fisheries projects the catch limit will be reached by **July 26, 2022**, and is closing the fishery to prevent the catch limit from being exceeded.

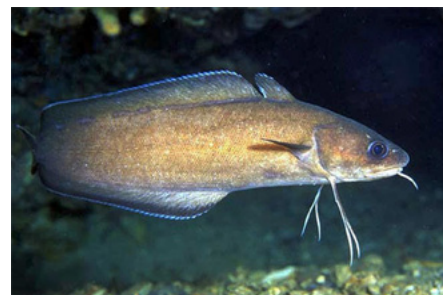
### During and After The Closure:

During a closure, the recreational bag and possession limit for blueline tilefish in or from the South Atlantic federal waters is zero.



**Recreational Blueline Tilefish in South Atlantic Federal Waters Will Open on May 1, 2022, and Close on July 26, 2022.**

## Last Month's Mystery Fish The Greater Forkbeard



Also known as: Forked Hake, Blennoid Forkbeard, Sweaty Betty, Plus Fours. Size up to 3ft and 7lbs. It feeds on small fish and crustaceans.

It has an elongated body covered in large silvery scales.

Can have red/brown tinge around the head and flanks. First dorsal fin is very high with the first ray extended into a long, trailing point. Second dorsal fin and anal fins are long, at around half the length of the body, and may have black or dark edges. Pelvic fins are also extremely elongated, trailing half the length of the body. Barbule is present on chin.

The greater forkbeard is an unusual fish which is seldom encountered by anglers and little known by the general public. Despite its relative obscurity there is a limited market for this species as a food fish throughout Europe. There is also a British shore and boat caught record, as well as an IGFA world record for this species.

This species is usually found in deeper offshore waters of several hundred metres, with the largest fully grown specimens moving into even deeper water. They can be found across a range of different seabeds, from rock and coral to sand and mud.

Smaller greater forkbeards feed on marine worms, dislodged shellfish and small creatures such as prawns and shrimps and may be found in shallower coastal waters.





# Select Recreational Fishing Regulations

January 2022



## Atlantic Croaker

- Minimum Size Limit: No size limit
- Recreational Bag Limit: 50 per person; additional 50 live bait per customer capacity on for-hire or charter vessels



## Spot

- Minimum Size Limit: No size limit
- Recreational Bag Limit: 50 per person; additional 50 live bait per customer capacity on for-hire or charter vessels



## Kingfish

- Minimum Size Limit: No size limit
- Recreational Bag Limit: No bag limit



## Grey Trout (Weakfish)

- Minimum Size Limit: 12 inches
- Recreational Bag Limit: 1 per person



## Bluefish

- Minimum Size Limit: No size limit
- Recreational Bag Limit: 3 per person from shore or a rented or private vessel
- 5 per person on for-hire or charter vessels



## Spanish Mackerel

- Minimum Size Limit: 14 inches
- Recreational Bag Limit: 15 per person



## King Mackerel

- Minimum Size Limit: 27 inches
- Recreational Bag Limit: 3 per person



## Cobia (Permit Required)

- Minimum Size Limit: 40 inches
- Recreational Bag Limit: 1 per person or 2 per vessel, whichever is more restrictive. Only 1 fish per vessel may be greater than 50 inches total length.
- Season: June 15 - September 15



## Summer Flounder

- Minimum Size Limit: 16.5 inches
- Recreational Bag Limit: 4 per person



## Striped Bass

Any person fishing striped bass recreationally shall use non-offset, corrodible, non-stainless steel circle hooks when fishing with bait.

### Chesapeake Bay Spring Season

- Size Limit: 20-28 inches
- Recreational Bag Limit: 1 fish per person
- Season: May 16 - June 15

### Chesapeake Bay Fall Season

- Size limit: 20-36 inches
- Recreational Bag Limit: 1 fish per person
- Season: October 4 - December 31

### Coastal Season

- Size Limit: 28-36 inches
- Recreational Bag Limit: 1 per person
- Season: January 1 - March 31, May 16 - December 31

**Select species provided for information purposes only. Not all regulated species are included. All regulations are subject to change. It is the angler's responsibility to know and abide by all current regulations and laws. Check for new regulations before you go fishing. [www.mrc.virginia.gov](http://www.mrc.virginia.gov)**



## Spadefish

- Minimum Size Limit: No size limit
- Recreational Bag Limit: 4 per person



## Sheepshead

- Minimum Size Limit: No size limit
- Recreational Bag Limit: 4 per person



## Black Sea Bass

- Minimum Size Limit: 12.5 inches
- Recreational Bag Limit: 15 per person
- Season: May 15 - Dec 31



## Tautog

- Minimum Size Limit: 16 inches
- Recreational Bag Limit: 4 per person
- Season: January 1-May 15, July 1- Dec. 31



## Speckled Trout

- Minimum Size Limit: 14 inches
- Recreational Bag Limit: 5 per person, only 1 greater than 24"



## Red Drum

- Minimum Size Limit: 18 inches
- Maximum Size Limit: 26 inches
- Recreational Bag Limit: 3 per person



## Black Drum

- Minimum Size Limit: 16 inches
- Recreational Bag Limit: 1 per person

# THE CHESAPEAKE BAY

## HOW TO PROPERLY CATCH AND RELEASE FISH (WITHOUT KILLING THEM)

From Salt Strong

By: Joseph Simonds on November 11, 2015

Another dead fish...

Allow me to introduce you to one of the most misunderstood and misused fishing techniques that sadly kills countless fish every year in both freshwater and saltwater...

And then allow me to also introduce you to a fellow angler that is working incredibly hard to put an end to the accidental killing of fish...

But first, let's talk about the Big Problem that is ironically killing fish...

It's a well-known term called, "Catch and Release Fishing" that you've certainly heard of (and hopefully have practiced a time or two... or countless hundreds of times).

I say "ironically killing fish" because this fishing conservation practice known as catch and release fishing has been backfiring more than ever before... resulting in more dead and severely handicapped fish from failed releases...and if you are scratching your head wondering how catch and release fishing can end up killing or disabling your fish, then please read the rest of this article.

### Proper Catch and Release Handling: By Marc Krsek

We have all seen it at one point or another...A picture pops up on a forum, facebook page, or other forms of social media of a beautiful trophy fish being badly handled. And we all know the backlash that can sometimes follow.

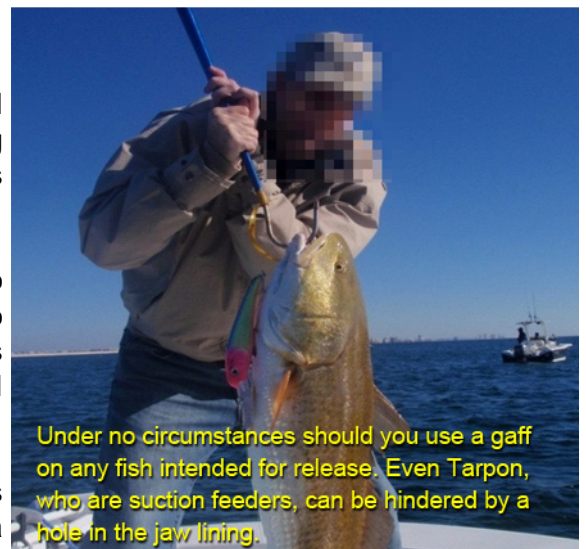
It can get downright brutal! But we should be using these instances as an opportunity to educate rather than bash our fellow anglers. More often than not, the angler had not been educated on the correct way to handle a game fish intended for release. So this article is intended to help educate the angling community on fish handling skills and respect of the fish overall.'

### Mistake #1 - Holding the Fish Vertically by the Jaw or Gills

Large fish can be very sensitive to the landing process and there are a few key rules of thumb that you can apply while landing and posing your fish for pictures to eliminate or minimize distress and damage to the fish.

The aqueous world in which fish reside in is essentially a zero gravity environment. In other words, fish were never intended to be brought above the surface and handled. Therefore, their organs are not designed to feel the effects of gravity in which you and I live in.

What many of us take for granted can cause numerous complications for a fish, most leading to eventual death. Holding a fish by the jaw and hanging it in a vertical fashion is the single most



Under no circumstances should you use a gaff on any fish intended for release. Even Tarpon, who are suction feeders, can be hindered by a hole in the jaw lining.

*Continued on Page 10*



detrimental act one can inflict upon a fish intended for release.

When the fish is hung vertically, the weight of the fish causes vertebrae to separate in the spine, and causes the organs to shift downward in the stomach cavity and potentially tear.

A study was done on Barramundi, (a close relative to the Snook) to measure the effects of jaw hanging (aka hanging each fish by its jaw before releasing it). In the study, 50 out of 50 of these fish that were handled in this manner eventually died as a direct result of being jaw hung <https://myfwc.com/research/saltwater/fish/snook/cryptic-mortality/>.

That is an astounding statistic and should be an absolute eye opener for every conservation minded angler.

### So then what IS the correct way to handle your fish?

The best rule of thumb is to always keep the fish horizontal. Never hold the fish in a vertical fashion whether it is with your hand, or a lip gripping device, and always be sure to support the belly of the fish, letting the stomach cavity rest on your open palm if possible. If you lay the fish on the gunwale of the boat to remove the hook, make sure to wet it down to avoid slime loss.

### Mistake# 2 - Removing the fish's Slime

**NEVER** grab a fish that you are going to release with a towel or cloth, as this will remove slime. Boga grips (aka Fish Grips) and other fish gripping devices are useful tools **ONLY** if used in the correct fashion.

"Lipping" a fish with a device and then pulling it into the boat by the device only is essentially the same thing as hanging it by the jaw for a picture, so make sure you are always using fish grips correctly.

Kneel down and place your hand under the belly of the fish for support as you land it into the boat. **NEVER** weigh a fish on a hand scale if you intend to release it. An approximate weight can be taken by recording the length and girth measurements and then multiplying the two numbers.

Deeply hooked fish should be handled with extreme care. A de-hooker is a great tool to have on board to be able to extract a hook. If you have difficulty removing the hook the best course of action is to cut the line as close to the eye of the hook as possible and release the fish as is. Most of the time the fish can still feed and the hook will rust out in time.

Read ***"The Truth about Leaving a Fishing Lure in a Fish's Mouth [New Study]"***

Avoid using stainless steel hooks of any kind, as these will not rust out. If you are using natural bait, employing circle hooks is a great step for conservation as they almost always hook the fish in the corner of the mouth rather than the throat.

Light wire, non-coated hooks are best because they will rust out much faster in the event that you do have to leave the hook in the fish.

Please click ***HERE***, for the complete article and more good info.



Never hold a large fish like this. Regardless if you plan on releasing the fish or keeping it for dinner, it is good practice to get in the habit of supporting the fish's stomach and body weight.

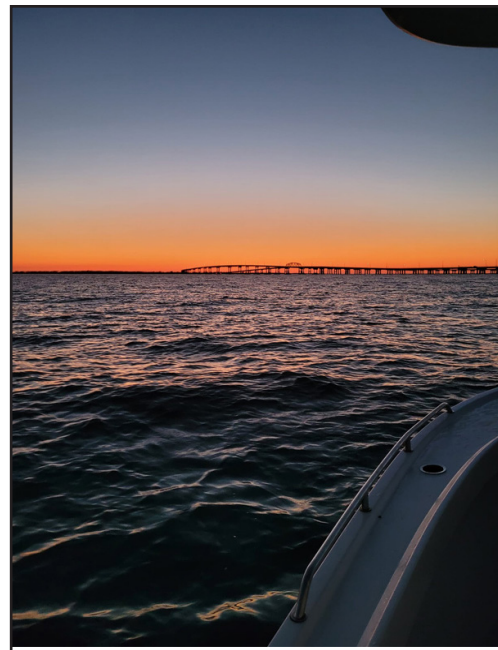


Support that belly like Steven Hartselle!

# FISH TALES



**Ken with mid-March Tog**



**Bringing in the big one**



**Ken with another nice drum**



**Dave Brabrand & 1st Bull Drum of the season**



**Stan fishing with Ken and Dave Brabrand**



# Monthly Tournament List January 2022

## Sea Bass

Wally Veal 24"

## Tautog

Rick Wineman 29"

## Bluefish

Wally Veal 34"

## Striped Bass

Wally Veal 51.5"

Wally had 11 sea bass from 20-24"

Monthly Tournament Contenders	
Species	Min Size
Albacore Tuna	35"
Amberjack	40"
Bigeye Tuna	40"
Black Drum	40"
Blackbelly Rosefish	14"
Blackfin Tuna	45"
Bluefin Tuna	45"
Bluefish	25"
Blueline Tilefish	20"
Blue Marlin	Release
Channel Bass	40"
Cobia	40"
Croaker	16"
Dolphin	35"
False Albacore	25"
Flounder	22"
Golden Tilefish	30"
Gray Trout	24"
Grouper	16"
Jack Crevalle	36"
King Mackerel	35"
Pompano	12"
Sailfish	Release
Sea Bass	15"
Shark	60"
Sheepshead	15"
Snapper	12"
Spadefish	18"
Spanish Mackerel	20"
Spearfish	Release
Speckled Trout	21"
Spot	8"
Striped Bass	36"
Swordfish	Release
Tarpon	Release
Tautog	18"
Triggerfish	15"
Wahoo	40"
White Marlin	Release
Whiting (Roundhead)	14"
Yellowfin Tuna	35"

Photo taken in 2017 by the Editor at the Hilton Waikoloa lagoon, Da Big Island, Hawaii

Bring your entries to Milton at our monthly meeting by 7:00 pm or send an email or snail mail to the address' on the left (Yellow Box). Please direct any questions to Milton.

MAIL ENTRY FORMS TO:  
MR. MILTON HUDGINS  
1894 KATIE LANE  
HAYES, VA 23072  
(e-mail: [judygee03@gmail.com](mailto:judygee03@gmail.com))

### Deadline for turning in your 2022 entry forms:

Month of Entry	Deadline (RegMtg)	Month	Deadline (Reg Mtg)
January	15 Feb	July	16 Aug
February	15 Mar	August	21 Sep
March	19 Apr	September	18 Oct
April	17 May	October	15 Nov
May	21 Jun	November	20 Dec
June	19 Jul	December	by Brd Mtg 10 Jan 2023



15 min after opening this is what the Fishing Flea Market looked like



Danny and our guest speaker  
Susanna Musick



Richie grabbing people as they walked by to sell  
them raffle tickets for the \$650 Rod & Reel Combo



Selling raffle tickets to the masses



The PSWSFA crew manning the booth



The Raffle Grand Prize



New and old members



Milton in his element







PLEASE HAND DELIVER TO MONTHLY MEETING or MAIL TO:  
PSWSFA, P.O. Box 5194, Newport News, VA 23605

## OFFICIAL ENTRY FORM

### Eligible Species

Amberjack	40"	Pompano	12"
Albacore Tuna	35"	Sea Bass	15"
Big Eye Tuna	40"	Sailfish	Release
Black Belly Rose Fish	14"	Shark	60"
Black Drum	40"	Sheepshead	15"
Black Fin Tuna	20"	Snapper	12"
Blue Fin Tuna	45"	Spadefish	18"
Bluefish	25"	Spanish Mackerel	20"
Blueline Tilefish	20"	Spearfish	Release
Blue Marlin	Release	Speckled Trout	21"
Channel Bass	40"	Spot	8"
Cobia	40"	Striped Bass	36"
Croaker	16"	Swordfish	Release
Dolphin	35"	Tarpon	Release
False Albacore	25"	Tautog	18"
Flounder	22"	Triggerfish	15"
Golden Tilefish	30"	Wahoo	40"
Gray Trout	24"	White Marlin	Release
Grouper	16"	Whiting (Roundhead)	14"
Jack Crevalle	36"	Yellowfin Tuna	35"
King Mackerel	35"		

I HEREBY CERTIFY THAT THE FOLLOWING STATEMENTS ARE THE TRUTH, AND THE RULES OF THIS CONTEST HAVE BEEN COMPLIED WITH (see back of this sheet)

### Required Information:

Tournament \_\_\_\_\_ Fish: \_\_\_\_\_

Date Caught: \_\_\_\_\_ Time Caught: \_\_\_\_\_ am/pm Length: \_\_\_\_\_

Name (printed): \_\_\_\_\_ Adult Youth

Signature: \_\_\_\_\_ Witness Signature: \_\_\_\_\_

### Optional Information:

Weight: \_\_\_\_\_ Where Caught: \_\_\_\_\_

Weight Master Signature: \_\_\_\_\_



# 2022 PSWSFA TOURNAMENTS

Download "Official Entry Form" at

<http://www.pswsfa.com/MonthlyEntry.pdf>



## FOR ALL TOURNAMENTS

**You must register prior to fishing** and use the PSWSFA official monthly entry form

Questions Contact: Tournament Director Rick Wineman: [rick@getanetsportfishing.com](mailto:rick@getanetsportfishing.com) or 757-268-1539

<p><b>Club Tog Tournament</b> <b>March 1<sup>st</sup> – April 11<sup>th</sup>, 2022</b> Must Receive Completed Form no later than the Club Mtg. April 19, 2022 See Rules below for weight tournament</p>	<p><b>Bishop's Trophy Red Drum Tournament</b> <b>May 1<sup>st</sup> – 31<sup>st</sup>, 2022</b> Must Receive Completed Form no later than the Club Mtg. June 21, 2022 See Rules below for Catch and Release fish totals. (Witness or photo)</p>
<p><b>Club Multiple Species Tournament</b> <b>June 1<sup>st</sup> – 30<sup>th</sup>, 2022</b> Angler who catches the most saltwater species in a single day Must Receive Completed Forms no later than the Club Mtg. July 19, 2022</p>	<p><b>Youth and Ladies Croaker/Spanish Mackerel Tournament</b> <b>July 1<sup>st</sup> -31<sup>st</sup>, 2022</b> Free Tournament for Lady and Youth members/Guests (Do not need to register to participate) Must Receive Completed Entry Forms no later than the Club Mtg. August 16, 2022</p>
<p><b>Don Forman Club Cobia Tournament</b> <b>sponsored by Bishop Fishing Supply</b> <b>August 1<sup>st</sup> -31<sup>st</sup>, 2022</b> Must Receive Completed Form no later than the Club Mtg. Sept. 20, 2022 See Rules below for weight tournament</p>	<p><b>Grafton Fishing Supply Club Spot Tournament</b> <b>September 17<sup>th</sup> – 18<sup>th</sup>, 2022</b> Weigh in: 2:00pm Sept. 18<sup>th</sup> at Dare Marina All entries will be weighed using the same club scale followed by the <b>Annual Club Picnic</b> Spot Tournament - Two categories with 1<sup>st</sup> – 3<sup>rd</sup> place winners: "ADULT ENTRIES" and "YOUTH ENTRIES" (Anglers for the Spot Tournament must be present to win) RSVP by Sept. 16<sup>th</sup> if you are coming to the Annual Club Picnic to the Tournament Director</p>
<p><b>Club Puppy Drum Tournament</b> <b>October 1<sup>st</sup> – 31<sup>st</sup>, 2022</b> Most number of Spots Wins (photos required) Must Receive Completed Forms and copies of photos no later than the Club Mtg. Nov 15, 2022</p>	<p><b>Wilcox Bait and Tackle Irv Fenton Rockfish Tournament</b> <b>December 1<sup>st</sup> -31<sup>st</sup>, 2022</b> Must Receive Completed Form no later than Jan. 17, 2023 See Rules below for weight tournament</p>

MAIL ENTRY FORMS TO: MR. MILTON HUDGINS, 1894 KATIE LANE, HAYES, VA 23072 (e-mail: [judygee03@gmail.com](mailto:judygee03@gmail.com))



# 2022 PSWSFA Tournaments Rules

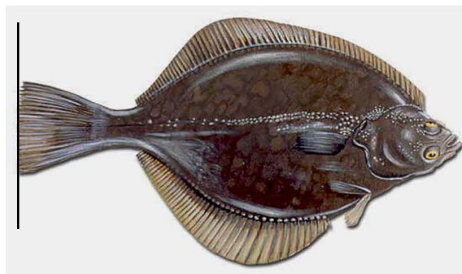
## **ALL Club Tournaments (Except as noted on front):**

- Entry Fees: \$20 for member & \$30 for non-member. Youth and Ladies croaker/Spanish mackerel tourney is free.
- You must register before fishing by e-mailing Rick Wineman: [rick@getanetsportfishing.com](mailto:rick@getanetsportfishing.com) or call 757-268-1539.
- Leaving a message will be sufficient to register, give all anglers names (specify club members and club guest), and also give a phone number.
- Guest(s) must fish with at least one member on boat/shore/pier/kayak
- Use a club "Official Entry Form" and weigh in fish at any Va. Saltwater Tournament official weigh station for weight tournaments. Record the weight of fish, date and time caught and have the weigh master sign the form to verify catch. If two identical fish are caught on the same day, the earlier fish wins. That is why time is so important. Length tournament entries require witness or photo.
- All pertinent PSWSFA bylaws apply.

**To register or ask questions, e-mail Rick Wineman, Tournament Director  
at [rick@getanetsportfishing.com](mailto:rick@getanetsportfishing.com) or call Rick @ 757-268-1539**

### **MEASURING INSTRUCTIONS**

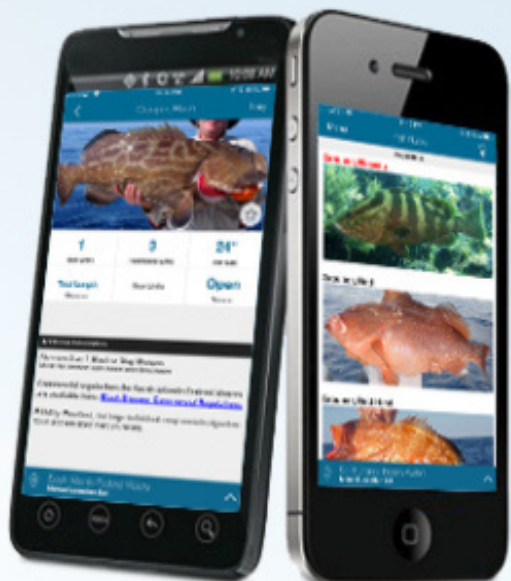
With the fish lying on a flat surface, measure in quarter inch increments, from the tip of the mouth to the tip of the tail with the fish in a natural position and the mouth closed.



[www.pswsfa.com](http://www.pswsfa.com)

## Fish Rules - Mobile App

### Recreational



Fishing Rules app from SAFMC

Download for:

**iPhone/iPad & Android**



NATIONAL OCEANIC & ATMOSPHERIC ADMINISTRATION

## Bycatch

Fishermen sometimes catch and discard animals they do not want, cannot sell, or are not allowed to keep, creating what we know as bycatch. Bycatch can be fish, but also includes marine mammals, sea turtles, and seabirds that become hooked or entangled in fishing gear.

Bycatch is a complex, global issue that threatens the sustainability and resiliency of our fishing communities, economies, and ocean ecosystems. Bycatch of protected species, such as sea turtles and marine mammals, remains a significant threat to recovering dwindling populations. We are committed to minimizing bycatch in U.S. fisheries to ensure our fisheries are sustainable and protected species are given the best chance to recover.

## Current Fishery Closures - RECREATIONAL:

Goliath Grouper, no possession or harvest allowed.

Speckled Hind, no possession or harvest is allowed.

Warsaw Grouper, no possession or harvest is allowed.

Nassau Grouper, no possession or harvest is allowed.

Red Snapper, closed effective July 12, 2021. If harvest is allowed by NOAA Fisheries, the recreational season is scheduled to open the second Friday in July each year. The length of the season is also determined by NOAA Fisheries.

Blueline Tilefish, closed effective September 1, 2021. The 2022 recreational season will be May 1 - July 26, 2022.

Snowy Grouper, closed effective September 1, 2021. Reopens May 1, 2022.

Wreckfish, closed effective September 1, 2021. Reopens July 1, 2022.

Hogfish (East Florida & Florida Keys), closed effective November 1, 2021. Reopens May 1, 2022.

Shallow-Water Grouper (gag, black grouper, red grouper, scamp, red hind, rock hind, yellowmouth grouper, yellowfin grouper, graysby, & coney), closed effective January 1, 2022. Reopen May 1, 2022 (except Red Grouper in the Carolinas which reopen June 1, 2022).





## Fishing Around the World



The Azores are found northwest of Madeira and share a reputation internationally with them for having some of the best fishing opportunities in Portugal and Europe. In addition to breathtaking landscapes and rustic fishing villages, here, the best fishing can be found in the deep waters of the Atlantic Ocean.

Big Blue Marlin can also be found in abundance here, with many seeing it as one of the best regions for finding this species. The average size here is in the 500 lbs vicinity. Of course, there are numerous other big game species waiting to be found as well. Various tuna are present in the waters surrounding the Azores, including Bluefin, Yellowfin, Longfin and Big Eye.



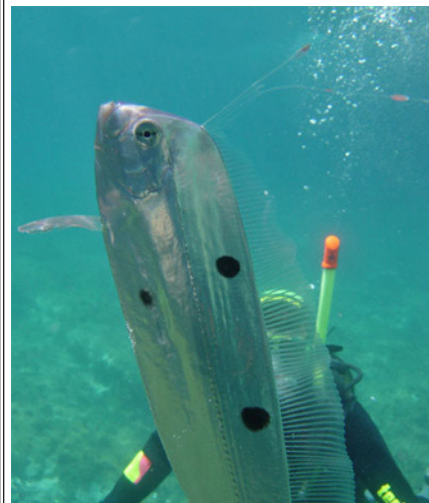
Much like Madeira, Azores holds many records for large marlin and is the winner of the 2001 Blue Marlin World Cup and owns 6 Blue Marlin IFGA world records. Faial island, part of the central islands group of the Azores, is famous for its Blue Marlin catches. Candor Bank, approximately 15 nautical miles south of Horta Harbour in Faial, is legendary for its quantity and size of Blue Marlin.

The islands also hold world record catches for 22 different species! White Marlin fishing from the island of Santa Maria, the southernmost island in the Azores, offers yet another exciting experience.

Big-game fishermen will be right at home in the Azores and can expect the experience, and maybe even the catch of a lifetime here! And If that's not enough, the islands also offer prime surfing and scuba diving settings.

### So you think you know your Fish

Name this Fish?  
Answer next month





As a member of Peninsula Salt Water Sport Fisherman's Association,  
a BoatU.S. Cooperating Group, you are invited to **become a BoatU.S. Member**  
**at a special rate:**

## **\$15 Boat U.S. Membership Dues and 10% off Water Towing Services**

**BOAT U.S. COOP GROUP #:**

Contact Gary Donaldson at  
[tarpon05@gmail.com](mailto:tarpon05@gmail.com)  
For the PSWSFA Coop group #

### **NEW MEMBERS**

Sign up online at **BoatUS.com/Join**  
(enter your BoatU.S. Coop Group #  
on the first page of the application)

### **CURRENT MEMBERS**

Not receiving the discount? Email  
**Membership@BoatUS.com**

## **MEMBERSHIP BENEFITS INCLUDE:**

- 24/7 Dispatch to over 600 towboats in 300+ ports nationwide
- Marine insurance for boaters with 24/7 claims service
- Discounts on fuel, slips, repairs & more at over 1,200 boating businesses nationwide
- Subscription to *BoatU.S. Magazine* – 6 issues per year

Visit **BoatUS.com/Membership** to learn about all benefits  
and services offered to BoatU.S. Members.

MB411 8/17



INSURANCE



DISCOUNTS



MAGAZINE



SAFETY



ADVOCACY



TOWING



TRAILER ASSIST



DISCOUNTS



## Directions to PSWSFA Meeting

### Former St Mark's Episcopal Church

From 64 (either direction) take the Mercury Blvd exit towards the James River Bridge (West) stay in the right hand lane and turn right at the light onto Todds Lane. Go past Zaxby's chicken about 400 ft and the driveway to the church is on the right. The original St, Mark's sign is still on the lawn just short of the driveway.

If you come to the traffic light at the intersection of Cunningham you went to far. Turn right on Cunningham and look for the Cunningham entrance to the church (500ft). If it is blocked you will need to do a U-turn on Cunningham and go left onto Todds Lane.

From Mercury, the church driveway is just short of the Bercuese Funeral home entrance or just after if coming from Cunningham.

## WHAT'S UP NEXT & BEYOND

19 April 2022 - 2nd Regular Members Meeting  
of the year 7:00pm  
Stan Simmerman will be speaking  
on Speck fishing

